

## KISTENMACHER PVC Connectors



Poles: 12 brass terminals, flexible  
 Material: Polyethylen (PE)  
 Terminal: Temperature-stable up to 85°C  
 Bolts: Brass  
 Screws: Steel galvanised, blue chromalised  
 Colours: Natural or Black

Art. No.	Size	Amp.	Pieces / carton
7-1025N	2,5 mm <sup>2</sup>	2,5 A	300 pieces
7-106N	4-6 mm <sup>2</sup>	5 A	200 pieces
7-110N	10 mm <sup>2</sup>	15 A	200 pieces
7-116N	16 mm <sup>2</sup>	30 A	120 pieces
7-125N	25 mm <sup>2</sup>	50 A	100 pieces

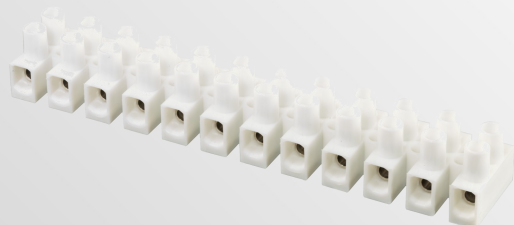


Poles: 12 brass terminals, flexible  
 Material: Polyethylen (PE)  
 Terminal: Temperature-stable up to 85°C  
 Bolts: Nickel plated brass  
 Screws: Zinc-plated steel  
 Colours: Black or White



Art. No.	Size	Amp.	Voltage	Pieces / carton
Z-154SZ/KM	35 mm <sup>2</sup>	100 A	750 V	40 pieces

## Polyamide EURO Connectors for High Temperature

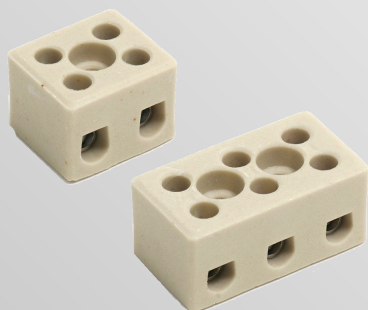


Poles: 12 brass terminals  
 Material: Polyamide (PA), self-extinguishing,  
 Terminal: Temperature-stable up to 100°C  
 Bolts: Brass, nickel plated  
 Screws: Steel galvanised, blue chromalised  
 Colours: Natural, White, Black

acc. to DIN EN 60998 / VDE 0613

Art. No.	Size	Amp.	Pieces / carton
7-1025N PA VDE	2,5 mm <sup>2</sup>	2,5 A	300 pieces
7-104N PA VDE	4 mm <sup>2</sup>	5 A	200 pieces
7-106N PA VDE	6 mm <sup>2</sup>	7,5 A	200 pieces
7-110N PA VDE	10 mm <sup>2</sup>	15 A	200 pieces
7-116N PA VDE	16 mm <sup>2</sup>	30 A	120 pieces

## Porcelain Connectors



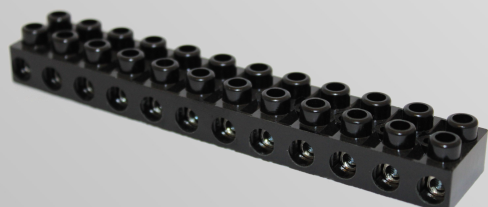
Poles: 1 - without fitting hole, no wire protection  
 2 + 3 - with fitting hole, no wire protection

Material: Porcelain KER DIN 40685, white glazed  
 Terminal: Temperature-stable up to max. 350°C  
 Bolts: Brass, nickel plated  
 Screws: steel, galvanised, blue chromalised  
 Packing: 100 pieces / carton

acc. to DIN EN 60998 / VDE 0613

Rated cross section (for solid conductors)	Art. No. 1-poles	Art. No. 2-poles	Art. No. 3-poles	Ampere
2,50 mm <sup>2</sup>	120201	120212	120213	24 A
4 mm <sup>2</sup>	122201	122212	122213	32 A
6 mm <sup>2</sup>	123201	123212	123213	41 A
10 mm <sup>2</sup>	124201	124212	124213	57 A
16 mm <sup>2</sup>	125201	125212	125213	76 A

## Bakelite Connectors



Poles: 12  
 Material: Bakelite type PF31  
 Terminal: Temperature-stable up to max. 140°C  
 Bolts: Brass, nickel plated (galvanised)  
 Screws: Zinc-plated steel (galvanised)  
 Colour: Black

Art. No.	Size	Pieces / carton
3-722-8-12	1,5 - 6 mm <sup>2</sup>	20 pieces
3-822-8-12	10 mm <sup>2</sup>	20 pieces
3-922-8-12	16 mm <sup>2</sup>	20 pieces