

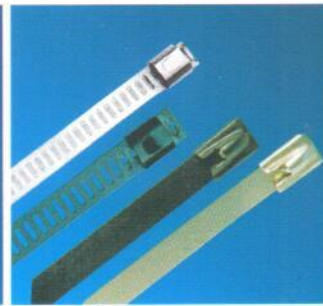


# A GROUP CRYSTAL ENTERPRISES

Standard Product Catalogue

## Mfg. Range

- Copper & Aluminium Terminals
- Stainless Steel Cable Ties & Accessories
- Copper, Copper Bonded Earth Rods & Earthing Accessories
- Insulated & Brazed Terminals
- Brass Cable Glands
- Crimping & Cutting Tools



## Certificate of Compliance

Certificate Number: 20110503E23909-032707  
 Report Reference: E23909R\_2010 June16  
 Issue Date: 2011 May 03



**Issued to:** CRYSTAL EXPORTS

UNIT NO 11, BLDG NO 1  
 MEENAKSHI INDUSTRIAL ESTATE, NAIK PADA  
 WALIV, VASAI (E), THANE, MH-401208 INDIA

This is to certify that  
 representative samples of

**Grounding and Bonding Equipment**

For model information please refer to the addendum

Have been investigated by Underwriters Laboratories Inc. (UL) in  
 accordance with the Standard(s) indicated on this Certificate.

**Standards for Safety:**

LSL have been investigated using requirements contained in the Standard UL  
 467, 9th Edition dated September 21, 2007, containing revisions through and  
 including September 21, 2007.  
 CML have been investigated using requirements contained in CSA C22.2  
 No. 41-07, 5th Edition, dated September 21, 2007, containing revisions through  
 and including September 21, 2007.

**Additional Information:**

See UL On-Line Certification Directory at [www.ul.com](http://www.ul.com) for additional  
 information.

Only those products bearing the UL Listing Mark for the US and Canada should be considered as being covered by  
 UL's Listing and Follow-Up Service meeting the appropriate requirements for US and Canada.

The UL Listing Mark for the US and Canada generally includes the UL in a circle symbol with "E" and "CS" identifiers.  
 The word "ELECTRIC" is a control number (not an alphanumeric program) in UL, and the product category name (product  
 identifier) as indicated in the appropriate UL Directory.

Look for the UL Listing Mark on the product

William R. Egan

Director of the North American Certification Program

Underwriters Laboratories Inc.

Our Listing and Follow-Up Service is provided on behalf of Underwriters Laboratories Inc. (UL) and our authorized service of UL.  
 For questions, contact your local UL office or [www.ul.com](http://www.ul.com).

## Certificate of Compliance

Certificate Number: 20110503E23909-032707  
 Report Reference: E23909R\_2009 Sep 17  
 Issue Date: 2011 May 03



**Issued to:** CRYSTAL EXPORTS

UNIT NO 11, BLDG NO 1  
 MEENAKSHI INDUSTRIAL ESTATE, NAIK PADA  
 WALIV, VASAI (E), THANE, MH-401208 INDIA

This is to certify that  
 representative samples of

**Wire Connectors and Soldering Lugs**

For model information please refer to the addendum

Have been investigated by Underwriters Laboratories Inc. (UL) in  
 accordance with the Standard(s) indicated on this Certificate.

**Standard(s) for Safety:**

UL - Evaluated to UL 486A - 486D, 1st Ed. dated November 15, 2003  
 Containing revisions through and including August 25, 2006 and UL 486C, 5th  
 Edition, dated September 7, 2004, Containing revisions through and including  
 April 9, 2009.  
 CML - CSA C22.2 No. 65-03, 4th Ed. dated November 15, 2003 Containing  
 revisions through and including Revised August 25, 2006 & CSA C22.2 No. 188-  
 04, 2nd Ed. Revised August 25, 2006.

**Additional Information:**

See UL On-Line Certification Directory at [www.ul.com](http://www.ul.com) for additional  
 information.

Only those products bearing the UL Listing Mark for the US and Canada should be considered as being covered by  
 UL's Listing and Follow-Up Service meeting the appropriate requirements for US and Canada.

The UL Listing Mark for the US and Canada generally includes the UL in a circle symbol with "E" and "CS" identifiers.  
 The word "ELECTRIC" is a control number (not an alphanumeric program) in UL, and the product category name (product  
 identifier) as indicated in the appropriate UL Directory.

Look for the UL Listing Mark on the product

William R. Egan

Director of the North American Certification Program

Underwriters Laboratories Inc.

Our Listing and Follow-Up Service is provided on behalf of Underwriters Laboratories Inc. (UL) and our authorized service of UL.  
 For questions, contact your local UL office or [www.ul.com](http://www.ul.com).

## Certificate of Registration

This certificate has been awarded to

**Crystal Exports**

Crystal House, Building No. 4, Behind Blueberry Industrial Estate, Naik Pada,  
 Waliv, Vasai (E), Dist. Palghar, Maharashtra, 401208, India

in recognition of the organization's Environmental Management System which complies with

**ISO 14001:2004**

The scope of activities covered by this certificate is defined below

**Design, Manufacture and Export of Lugs, Cable Terminal Ends,  
 Connectors, Earth Rods and Earthing Accessories and Export of  
 Electrical Wiring Accessories**

Certificate Number: 15429A/02/15A/EN	Date of Issue (Original): 04 September 2014	Date of Issue: 04 September 2014
Issue No. 03	Expiry Date: 03 September 2017	



## CERTIFICATE TUV NORD

Management system as per  
**ISO 9001 : 2008**

In accordance with TUV NORD CERT procedures, it is hereby certified that

**CRYSTAL EXPORTS**  
 "Crystal House", Bldg No. 4, Behind Blue Berry Ind. Estate,  
 Near Meenakshi Ind. Estate, Naik Pada, Village Waliv,  
 Vasai (East), Thane - 401 208, Maharashtra,  
 India

applies a management system in line with the above standards for the following scope

**Design, Manufacture and Exports of Lugs  
 Manufacture & Exports of Cable Terminal Ends, Connectors,  
 Earth Rods and Earthing Accessories  
 Exports of Electrical Wiring Accessories**

Certificate Registration No. 44 186 084024  
 Audit Report No. 2.5-3802097

Valid until 21.12.2016  
 Valid from 22.12.2013  
 Initial certification 04.02.2008

*S. K. Kulkarni*

Certification Body  
 at TUV NORD CERT GmbH

Issue 20.11.2013  
 Place: Mumbai

This certification was conducted in accordance with the TUV NORD CERT auditing and  
 certification procedures and is subject to regular surveillance audits.

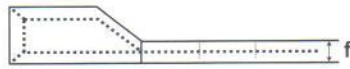
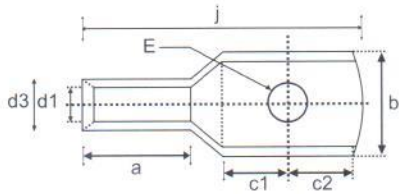
TUV NORD CERT GmbH Langemannstrasse 20 45141 Essen [www.tuv-nord.com](http://www.tuv-nord.com)



TGA-29407-06-00

**GROUP  
 CRYSTAL**

# ALUMINIUM TUBULAR LUGS

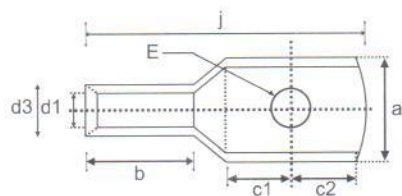


Size mm <sup>2</sup>	ØE	a	b	c1+c2	ød1	ød3	f	j	CAT NO.
4.5	M5	7	12.0	13	2.9	5.5	1.2	24	AS2K-317
6.5	M5	7	8.0	13	3.5	5.5	2.0	24	AS2K-158
6.6	M6	7	12.0	13	3.5	5.5	1.1	24	AS2K-313
10.6	M6	9	10.0	17	4.4	7.4	2.8	30	AS2K-214
10.8	M8	9	15.0	17	4.4	7.4	1.8	30	AS2K-215
16.6	M6	13	11.0	20	5.4	8.3	2.9	37	AS2K-252
16.8	M8	13	11.0	20	5.4	8.3	2.9	37	AS2K-216
16.10	M10	13	18.0	20	5.4	8.3	1.8	37	AS2K-217
25.8	M8	16	14.0	21	7.0	10.0	3.0	44	AS2K-218
25-10	M10	16	20.0	21	7.0	10.0	1.7	44	AS2K-219
25-12	M12	16	20.0	21	7.0	10.0	1.7	44	AS2K-220
35-8	M8	18	15.0	22	8.0	10.8	2.8	47	AS2K-221
35-10	M10	18	20.0	22	8.0	10.8	2.1	47	AS2K-222
50-8	M8	22	18.0	24	9.3	13.0	3.7	54	AS2K-255
50-10	M10	22	23.0	24	9.3	13.0	2.8	54	AS2K-312
50-12	M12	22	23.0	24	9.3	13.0	2.8	54	AS2K-224
70-8	M8	26	22.0	26	11.6	16.0	4.4	60	AS2K-256
70-10	M10	26	22.0	26	11.6	16.0	4.4	60	AS2K-225
70-12	M12	26	22.0	26	11.6	16.0	4.4	60	AS2K-226
95-10	M10	28	25.0	28	12.9	17.1	4.2	64	AS2K-227
95-12	M12	28	25.0	28	12.9	17.1	4.2	64	AS2K-228
95-16	M16	28	25.0	28	12.9	17.1	4.2	64	AS2K-229
120-10	M10	32	28.0	30	14.8	19.6	4.8	73	AS2K-257
120-12	M12	32	28.0	30	14.8	19.6	4.8	73	AS2K-230
120-16	M16	32	28.0	30	14.8	19.6	4.8	73	AS2K-231
150-10	M10	34	31.0	34	16.1	21.2	5.1	79	AS2K-258
150-12	M12	34	31.0	34	16.1	21.2	5.1	79	AS2K-232
150-16	M16	34	31.0	34	16.1	21.2	5.1	79	AS2K-233
185-10	M10	36	34.0	36	18.0	23.7	5.7	84	AS2K-311
185-12	M12	36	34.0	36	18.0	23.7	5.7	84	AS2K-234
185-16	M16	36	34.0	36	18.0	23.7	5.7	84	AS2K-235
225-12	M12	40	39.0	40	18.0	27.0	6.4	94	AS2K-320
240-12	M12	44	40.0	44	22.0	28.0	6.0	102	AS2K-236
240-16	M16	44	40.0	44	22.0	28.0	6.0	102	AS2K-237
300-16	M16	47	45.7	54	24.0	31.0	7.0	115	AS2K-300
300-20	M20	47	45.0	54	24.0	31.0	7.0	115	AS2K-259
400-20	M20	56	51.0	61	28.0	36.0	8.0	130	AS2K-260
500-20	M20	60	58.0	65	30.0	41.0	11.0	140	AS2K-296
630-20	M20	69	66.0	69	35.0	46.0	11.0	154	AS2K-261
800	-	77	73.0	78	39.0	51.0	12.0	180	AS2K-318
1000	-	100	81.0	90	43.5	57.0	13.5	220	AS2K-319

MATERIAL: ALUMINUM IS - 5082

FINISH: NATURAL

# ALUMINIUM TUBULAR LUGS



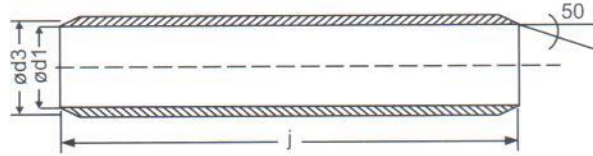
Size mm <sup>2</sup>	ØE	a	b	c1+c2	ød1	ød3	f	j	CAT NO.
4.5	M5	10.5	12.0	13	2.9	5.5	1.2	27.5	AS2K-517
6.5	M5	10.5	8.0	13	3.5	5.5	2.0	27.5	AS2K-558
6.6	M6	10.5	12.0	13	3.5	5.5	1.1	27.5	AS2K-513
10.6	M6	13.5	10.0	17	4.4	7.4	2.8	34.5	AS2K-514
10.8	M8	13.5	15.0	17	4.4	7.4	1.8	34.5	AS2K-515
16.6	M6	19.5	11.0	20	5.4	8.3	2.9	43.5	AS2K-552
16.8	M8	19.5	11.0	20	5.4	8.3	2.9	43.5	AS2K-516
16.10	M10	19.5	18.0	20	5.4	8.3	1.8	43.5	AS2K-517
25.8	M8	24.0	14.0	21	7.0	10.0	3.0	52.0	AS2K-518
25-10	M10	24.0	20.0	21	7.0	10.0	1.7	52.0	AS2K-519
25-12	M12	24.0	20.0	21	7.0	10.0	1.7	52.0	AS2K-520
35-8	M8	27.0	15.0	22	8.0	10.8	2.8	56.0	AS2K-521
35-10	M10	27.0	20.0	22	8.0	10.8	2.1	56.0	AS2K-522
50-8	M8	33.0	18.0	24	9.3	13.0	3.7	65.0	AS2K-655
50-10	M10	33.0	23.0	24	9.3	13.0	2.8	65.0	AS2K-512
50-12	M12	33.0	23.0	24	9.3	13.0	2.8	65.0	AS2K-524
70-8	M8	39.0	22.0	26	11.6	16.0	4.4	73.0	AS2K-556
70-10	M10	39.0	22.0	26	11.6	16.0	4.4	73.0	AS2K-525
70-12	M12	39.0	22.0	26	11.6	16.0	4.4	73.0	AS2K-526
95-10	M10	42.0	25.0	28	12.9	17.1	4.2	78.0	AS2K-527
95-12	M12	42.0	25.0	28	12.9	17.1	4.2	78.0	AS2K-528
95-16	M16	42.0	25.0	28	12.9	17.1	4.2	78.0	AS2K-529
120-10	M10	48.0	28.0	30	14.8	19.6	4.8	89.0	AS2K-557
120-12	M12	48.0	28.0	30	14.8	19.6	4.8	89.0	AS2K-530
120-16	M16	48.0	28.0	30	14.8	19.6	4.8	89.0	AS2K-531
150-10	M10	51.0	31.0	34	16.1	21.2	5.1	96.0	AS2K-658
150-12	M12	51.0	31.0	34	16.1	21.2	5.1	96.0	AS2K-532
150-16	M16	51.0	31.0	34	16.1	21.2	5.1	96.0	AS2K-533
185-10	M10	54.0	34.0	36	18.0	23.7	5.7	102.0	AS2K-511
185-12	M12	54.0	34.0	36	18.0	23.7	5.7	102.0	AS2K-534
185-16	M16	54.0	34.0	36	18.0	23.7	5.7	102.0	AS2K-535
225-12	M12	60.0	39.0	40	18.0	27.0	6.4	114.0	AS2K-620
240-12	M12	66.0	40.0	44	22.0	28.0	6.0	124.0	AS2K-536
240-16	M16	66.0	40.0	44	22.0	28.0	6.0	124.0	AS2K-537
300-16	M16	70.0	45.7	54	24.0	31.0	7.0	138.5	AS2K-500
300-20	M20	70.0	45.0	54	24.0	31.0	7.0	138.5	AS2K-559
400-20	M20	84.0	51.0	61	28.0	36.0	8.0	158.0	AS2K-560
500-20	M20	90.0	58.0	65	30.0	41.0	11.0	170.0	AS2K-596
630-20	M20	103.5	66.0	69	35.0	46.0	11.0	188.5	AS2K-561
800	-	115.5	73.0	78	39.0	51.0	12.0	218.5	AS2K-618
1000	-	150.0	81.0	90	43.5	57.0	13.5	270.0	AS2K-619

MATERIAL: ALUMINUM IS - 5082

FINISH: NATURAL



# ALUMINIUM STRAIGHT THROUGH CONNECTORS FOR XLPE CABLES

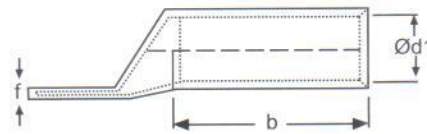
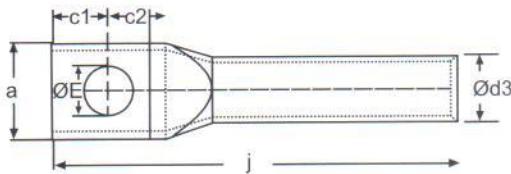


Size mm <sup>2</sup>	$\phi d1$	$\phi d3$	j	CAT NO.
25	7.2	9.6	82	AS2K-XL1
35	8.3	11.1	90	AS2K-XL2
50	10.1	13.5	100	AS2K-XL3
70	10.2	14.5	104	AS2K-XL4
95	12.0	16.9	108	AS2K-XL5
120	13.7	19.0	112	AS2K-XL6
150	15.1	21.1	116	AS2K-XL7
185	16.6	23.9	128	AS2K-XL8
225	18.6	26.1	136	AS2K-XL9
240	19.3	27.2	148	AS2K-XL10
300	21.8	30.2	160	AS2K-XL11
400	25.0	34.8	182	AS2K-XL12
500	28.2	39.1	190	AS2K-XL13
630	31.7	44.4	200	AS2K-XL14
800	35.7	49.5	225	AS2K-XL15
1000	41.0	56.0	250	AS2K-XL16

MATERIAL: ALUMINIUM IS - 5082

FINISH: NATURAL

# ALUMINIUM TUBULAR TERMINALS FOR XLPE CABLES



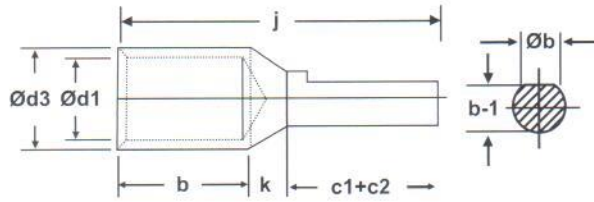
Size mm <sup>2</sup>	$\phi E$	$\phi d1$	$\phi d3$	a	f	b	c2	c1	j	CAT NO.
25	8.2	7.2	9.6	14.0	2.4	41	12	9	69	AS2K-XL17
35	8.2	8.3	11.1	16.0	2.8	50	11	11	79	AS2K-XL18
50	10.2	10.1	13.5	90.5	3.4	49	13	11	81	AS2K-XL19
70	10.2	10.2	14.5	20.5	4.3	62	13	13	96	AS2K-XL20
95	12.7	12.0	16.9	23.5	4.9	73	14	14	109	AS2K-XL21
120	12.7	13.7	19.0	26.5	5.3	73	15	15	114	AS2K-XL22
150	12.7	15.1	21.1	29.5	6.1	83	17	17	128	AS2K-XL23
185	12.7	16.6	23.9	33.0	7.3	83	18	18	131	AS2K-XL24
225	12.7	18.6	26.1	36.0	7.5	86	20	20	140	AS2K-XL25
240	12.7	19.3	27.2	37.5	7.9	86	22	22	144	AS2K-XL26
300	20.3	21.8	30.2	42.0	8.4	89	27	27	157	AS2K-XL27
400	20.3	25.0	34.8	48.0	9.8	113	30	30	187	AS2K-XL28
500	20.3	28.2	39.1	54.0	10.9	125	32	32	205	AS2K-XL29
630	20.3	31.7	44.4	61.0	12.7	140	34	34	225	AS2K-XL30
800	-	35.7	49.5	68.0	13.8	147	39	39	250	AS2K-XL31
1000	-	41.0	56.0	77.5	15.0	160	45	45	280	AS2K-XL32

MATERIAL: ALUMINIUM IS - 5082  
CONFORMS : IS - 8309

FINISH: NATURAL



# ALUMINIUM REDUCER TYPE PIN CONNECTORS



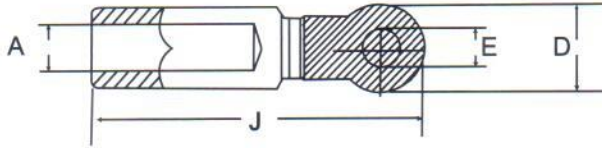
Size mm <sup>2</sup>	ØE	Ød1	d	b	h	l-1	j	f	CAT NO.
2.5	2.0	5.5	4.5	4.0	7	4	10	21	AP2K-1
2.5	2.6	5.5	3.8	3.3	7	4	10	21	AP2K-7
4	2.9	5.5	4.5	4.0	7	4	10	21	AP2K-15
4	2.9	5.5	3.8	3.3	7	4	10	21	AP2K-16
6	3.5	5.5	4.5	4.0	7	4	10	21	AP2K-17
6	3.5	5.5	3.8	3.3	7	4	10	21	AP2K-18
10	3.8	7.4	4.5	4.0	9	4	10	23	AP2K-19
10	3.8	7.4	3.8	3.3	9	4	10	23	AP2K-20
10	4.4	7.4	4.5	4.0	9	4	10	23	AP2K-21
10	4.4	7.4	3.8	3.3	9	4	10	23	AP2K-22
16	5.4	8.3	6.0	5.5	13	5	15	33	AP2K-23
16	5.4	8.3	6.0	5.5	13	5	20	38	AP2K-24
16	5.4	8.3	3.8	3.3	13	5	13	31	AP2K-2
25	7.0	10.0	6.0	5.5	16	5	15	36	AP2K-25
25	7.0	10.0	7.5	6.5	16	5	20	41	AP2K-3
35	8.0	10.0	7.5	6.5	18	5	20	43	AP2K-4
50	9.3	13.0	7.5	6.5	22	5	20	47	AP2K-26
50	10.4	14.0	14.0	13.0	22	7	24	53	AP2K-5
70	11.6	16.0	7.5	6.5	26	5	20	51	AP2K-27
70	11.6	16.0	11.5	10.5	26	5	25	56	AP2K-6
70	11.6	16.0	11.5	10.5	26	5	32	63	AP2K-28
95	12.9	17.1	11.5	10.5	28	6	25	59	AP2K-29
95	12.9	17.1	15.6	14.0	28	6	27	61	AP2K-8
95	12.9	17.1	7.5	6.5	28	6	22	56	AP2K-31
95	12.9	17.1	12.8	11.8	28	6	32	66	AP2K-32
120	14.8	19.6	11.5	10.5	32	6	25	63	AP2K-33
120	14.8	19.6	7.5	6.5	32	6	22	60	AP2K-34
120	14.8	19.6	11.5	10.5	32	6	32	70	AP2K-35
120	14.8	19.6	15.6	14.0	32	6	32	70	AP2K-36
150	16.1	21.2	15.6	14.0	34	6	32	72	AP2K-10
150	16.1	21.2	11.5	10.5	34	6	32	72	AP2K-37
185	18.0	23.7	15.6	14.0	36	6	32	74	AP2K-30
185	18.0	23.7	11.5	10.5	36	6	32	74	AP2K-38
225	20.6	27.0	15.6	14.0	40	8	32	80	AP2K-39
225	20.6	27.0	21.0	18.0	40	8	42	90	AP2K-46
225	20.6	27.0	16.0	15.0	40	8	42	90	AP2K-42
240	22.0	28.0	16.0	15.0	44	8	42	94	AP2K-44
240	22.0	28.0	15.6	14.0	44	8	32	84	AP2K-43
300	24.0	31.0	16.0	15.0	47	8	42	97	AP2K-45
300	24.0	31.0	15.6	14.0	47	8	32	87	AP2K-47

MATERIAL : ALUMINIUM IS - 5082

FINISH : NATURAL



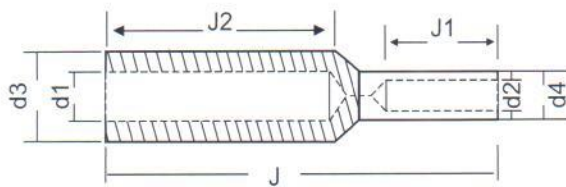
## BI-METALLIC TERMINALS (FRICTION WELDED)



Size Sq. mm	STUD	D	A	J	Cat No.
16	M 8	24	6.0	86.0	BM2K- 16-8
16	M 10	24	6.0	86.0	BM2K- 16-10
25	M 8	24	7.0	86.0	BM2K- 25-8
25	M 10	24	7.0	86.0	BM2K- 25-10
25	M 12	24	7.0	86.0	BM2K- 25-12
35	M 8	24	8.5	86.0	BM2K- 35-8
35	M 10	24	8.5	86.0	BM2K- 35-10
35	M 12	24	8.5	86.0	BM2K- 35-12
50	M 8	25	9.8	95.0	BM2K- 50-8
50	M 10	25	9.8	95.0	BM2K- 50-10
50	M 12	25	9.8	95.0	BM2K- 50-12
70	M 10	25	11.6	95.0	BM2K- 70-10
70	M12	25	11.6	95.0	BM2K- 70-12
95	M 10	25	13.8	95.0	BM2K- 95-10
95	M 12	25	13.8	95.0	BM2K- 95-12
95	M 16	25	13.8	95.0	BM2K- 95-16
120	M 12	28	15.5	120.0	BM2K- 120-12
120	M 16	28	15.5	120.0	BM2K- 120-16
150	M 12	35	17.0	120.0	BM2K- 150-12
150	M 16	35	17.0	120.0	BM2K- 150-16
150	M 20	35	17.0	120.0	BM2K- 150-20
185	M 10	35	18.5	135.0	BM2K- 185-10
185	M 12	35	18.5	135.0	BM2K- 185-12
185	M 16	35	18.5	135.0	BM2K- 185-16
185	M 20	35	18.5	135.0	BM2K- 185-20
240	M 10	35	21.5	135.0	BM2K- 240-10
240	M 12	35	21.5	135.0	BM2K- 240-12
240	M 16	35	21.5	135.0	BM2K- 240-16
240	M 20	35	21.5	135.0	BM2K- 240-20
300	M 12	35	24.0	140.0	BM2K- 300-12
300	M 16	35	24.0	140.0	BM2K- 300-16
300	M 20	35	24.0	140.0	BM2K- 300-20
400	M 12	36	27.5	160.0	BM2K-400-12
400	M 16	36	27.5	160.0	BM2K-400-16

**MATERIAL - ETP COPPER & ETP ALUMINIUM  
BARREL PREFILLED WITH CORROSION INHIBITING COMPOUND**

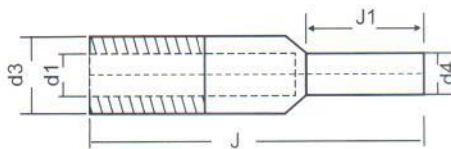
## BI-METALLIC REDUCER CONNECTORS



Cable Size	d1	d2	d3	d4	J1	J2	J	CAT NO.
16AL-16CU	6	5.4	10.0	9.0	30.0	30.0	70.0	BMR-16AL-16CU
25AL-25CU	7	6.8	12.0	10.0	30.0	33.0	75.0	BMR-25AL-25CU
35AL-35CU	8.5	8.2	14.0	11.0	30.0	40.0	85.0	BMR-35AL-35CU
50AL-50CU	9.8	9.5	16.0	13.0	32.0	42.0	95.0	BMR-50AL-50CU
70AL-70CU	11.6	11.2	18.0	15.0	38.0	50.0	105.0	BMR-70AL-70CU
95AL-95CU	13.0	13.5	21.0	18.0	40.0	50.0	110.0	BMR-95AL-95CU
120AL-120CU	14.8	15.0	23.0	19.5	42.0	55.0	112.0	BMR-120AL-120CU
150AL-150CU	16.5	16.5	25.0	21.0	44.0	55.0	118.0	BMR-150AL-150CU
185AL-185CU	18.5	18.5	27.0	24.0	46.0	60.0	125.0	BMR-185AL-185CU
240AL-240CU	22.0	21.0	30.0	27.0	54.0	60.0	130.0	BMR-240AL-240CU
300AL-240CU	23.0	21.0	34.0	28.0	56.0	65.0	145.0	BMR-300AL-240CU
400AL-300CU	27.0	23.0	38.0	30.0	60.0	70.0	155.0	BMR-400AL-300CU

BI METALLIC CONNECTORS ARE AVAILABLE IN VARIOUS OTHER CUSTOM MADE COMBINATIONS ALSO AS PER CUSTOMER REQUIREMENT.

## BI-METALLIC STUD CONNECTORS



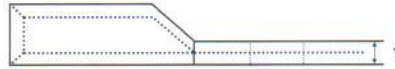
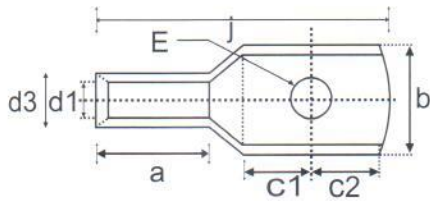
Cable Size	d1	d3	d4	J1	J	CAT NO.
10	5.5	12	6.0	20.0	55.0	BMCB-10
16	6.8	12	6.0	20.0	58.0	BMCB-16
25	8.0	14	7.0	22.0	71.0	BMCB-25
35	10.0	16	8.0	25.0	74.0	BMCB-35
50	11.0	18.5	10.0	30.0	87.0	BMCB-50
70	11.5	23	12.0	33.0	91.0	BMCB-70
95	13.2	23	12.0	38.0	97.0	BMCB-95
120	15.0	26	12.0	38.0	108.0	BMCB-120
150	16.5	28	14.0	44.0	116.0	BMCB-150
185	18.5	34	16.0	44.0	128.0	BMCB-185
240	21.5	34	18.0	46.0	131.0	BMCB-240
300	23.5	36	18.0	46.0	135.0	BMCB-300

MATERIAL - ETP COPPER & ETP ALUMINIUM  
BARREL PREFILLED WITH CORROSION INHIBITING COMPOUND

**GROUP  
CRYSTAL**



# COPPER TUBULAR LUGS FOR GENERAL DUTY



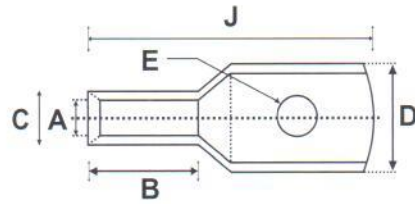
Size mm <sup>2</sup>	ØE	a	b	c1	c2	d1	d3	f	j	CAT NO.
2.5-5	M5	7	9	5	5	2.0	3.7	1.0	20	CS2K-05
4.0-6	M6	7	11	6	6	3.1	4.8	1.0	22	CS2K-06
6.0-6	M6	9	11	6	6	3.8	5.5	1.0	24	CS2K-07
10-6	M6	9	11	6	6	4.4	6.2	1.3	24	CS2K-08
16-6	M6	12	11	6	8	5.3	7.1	1.6	30	CS2K-09
25-6	M6	12	13	8	12	7.0	9.0	2.0	37	CS2K-10
35-6	M6	12	15	8	12	8.0	10.0	2.0	37	CS2K-11
35-8	M8	12	15	8	12	8.0	10.0	2.0	37	CS2K-12
50-6	M6	16	16	10	11	9.2	11.2	2.0	45	CS2K-13
50-8	M8	16	16	10	11	9.2	11.2	2.0	45	CS2K-14
50-10	M10	16	16	10	11	9.2	11.2	2.0	45	CS2K-15
70-8	M8	18	20	13	15	11.6	13.8	2.2	56	CS2K-16
70-10	M10	18	20	13	15	11.6	13.8	2.2	56	CS2K-17
70-12	M12	18	20	13	15	11.6	13.8	2.2	56	CS2K-18
95-10	M10	20	23	13	15	12.8	15.6	2.8	58	CS2K-19
95-12	M12	20	23	13	15	12.8	15.6	2.8	58	CS2K-20
120-10	M10	22	26	14	16	14.8	17.8	3.0	62	CS2K-21
120-12	M12	22	26	14	16	14.8	17.8	3.0	62	CS2K-22
120-16	M16	22	26	14	16	14.8	17.8	3.0	62	CS2K-23
150-10	M10	26	28	15	18	16.0	19.6	3.6	70	CS2K-24
150-12	M12	26	28	15	18	16.0	19.6	3.6	70	CS2K-25
150-16	M16	26	28	15	18	16.0	19.6	3.6	70	CS2K-26
185-12	M12	30	32	21	21	18.0	22.0	4.0	83	CS2K-27
185-16	M16	30	32	21	21	18.0	22.0	4.0	83	CS2K-28
225-16	M16	34	35	24	24	20.0	24.0	4.0	95	CS2K-231
240-16	M16	36	38	24	24	22.0	26.0	4.0	97	CS2K-29
240-20	M20	36	38	24	24	22.0	26.0	4.0	97	CS2K-30
300-16	M16	39	42	25	26	24.0	28.7	4.7	103	CS2K-31
300-20	M20	39	42	25	26	24.0	28.7	4.7	103	CS2K-32
400-20	M20	44	49	27	27	28.0	33.2	5.2	116	CS2K-33
500-20	M20	48	53	27	27	30.0	36.0	6.0	120	CS2K-34
630-20	M20	55	61	31	33	35.0	41.5	6.5	137	CS2K-35
800	-	65	67	37	38	39.0	46.3	7.3	165	CS2K-62
1000	-	90	76	45	45	43.0	53.8	10.8	210	CS2K-76

MATERIAL : COPPER IS - 191

FINISH - TIN PLATED



# COPPER TUBULAR TERMINALS WITH INSPECTION VENT



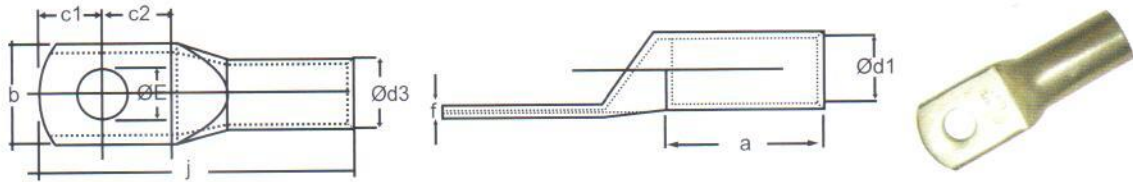
Material : ETP Grade Copper to BS-1977, Finish : Electro-tinned

Cable mm <sup>2</sup>	Stud Hole E	B	D	A	C	J	CAT No.
1.5	M 4	5.5	8.0	1.8	3.7	17.0	CEHD 1.5-4
1.5	M 5	5.5	8.0	1.8	3.7	17.0	CEHD 1.5-5
1.5	M 6	5.5	9.5	1.8	3.7	19.0	CEHD 1.5-6
2.5	M 4	8.0	8.5	2.4	4.0	21.5	CEHD 2.5-4
2.5	M 5	8.0	8.5	2.4	4.0	21.5	CEHD 2.5-5
2.5	M 6	8.0	9.5	2.4	4.0	21.5	CEHD 2.5-6
2.5	M 8	8.0	11.0	2.4	4.0	24.0	CEHD 2.5-8
4	M 4	8.0	9.5	3.1	4.8	21.0	CEHD 4-4
4	M 5	8.0	9.5	3.1	4.8	21.0	CEHD 4-5
4	M 6	8.0	9.5	3.1	4.8	21.0	CEHD 4-6
4	M 8	8.0	11.0	3.1	4.8	25.0	CEHD 4-8
6	M 5	10.0	9.5	3.8	5.5	23.0	CEHD 6-5
6	M 6	10.0	10.5	3.8	5.5	27.0	CEHD 6-6
6	M 8	10.0	11.0	3.8	5.5	27.0	CEHD 6-8
6	M 10	10.0	14.5	3.8	5.5	32.0	CEHD 6-10
10	M 5	10.0	10.5	4.5	6.2	25.5	CEHD 10-5
10	M 6	10.0	10.5	4.5	6.2	25.5	CEHD 10-6
10	M 8	10.0	11.5	4.5	6.2	27.5	CEHD 10-8
10	M 10	10.0	14.5	4.7	7.1	32.0	CEHD 10-10
10	M 12	10.0	18.0	4.7	7.1	36.0	CEHD 10-12
16	M 5	13.0	11.5	5.4	7.1	31.0	CEHD 16-5
16	M 6	13.0	11.5	5.4	7.1	31.0	CEHD 16-6
16	M 8	13.0	11.5	5.4	7.1	31.0	CEHD 16-8
16	M 10	13.0	14.5	5.5	7.9	35.0	CEHD 16-10
16	M 12	13.0	18.0	5.5	7.9	39.0	CEHD 16-12
20	M 8	13.0	11.5	6.0	7.7	32.5	CEHD 20-8
25	M 6	14.0	12.5	6.8	8.8	33.0	CEHD 25-6
25	M 8	14.0	13.0	6.8	8.8	33.0	CEHD 25-8
25	M 10	14.0	14.5	6.8	8.8	36.5	CEHD 25-10
25	M 12	14.0	16.5	6.8	8.8	40.0	CEHD 25-12
35	M 6	14.0	15.0	8.2	10.6	36.0	CEHD 35-6
35	M 8	14.0	15.0	8.2	10.6	36.0	CEHD 35-8
35	M 10	14.0	16.0	8.2	10.6	39.0	CEHD 35-10
35	M 12	15.5	21.0	8.2	10.6	47.0	CEHD 35-12
50	M 6	18.0	18.0	9.5	12.4	45.0	CEHD 50-6
50	M 8	18.0	18.0	9.5	12.4	45.0	CEHD 50-8
50	M 10	18.0	18.0	9.5	12.4	45.0	CEHD 50-10
50	M 12	22.0	21.0	9.5	12.4	52.0	CEHD 50-12
50	M 14	18.0	22.0	9.5	12.4	52.0	CEHD 50-14
50	M 16	18.0	22.0	9.5	12.4	52.0	CEHD 50-16
70	M 6	20.0	21.0	11.2	14.7	52.0	CEHD 70-6
70	M 8	20.0	21.0	11.2	14.7	52.0	CEHD 70-8
70	M 10	20.0	21.0	11.2	14.7	52.0	CEHD 70-10
70	M 12	20.0	21.0	11.2	14.7	52.0	CEHD 70-12
70	M 14	20.0	25.0	11.2	14.7	55.0	CEHD 70-14
70	M 16	20.0	25.0	11.2	14.7	55.0	CEHD 70-16
70	M 20	20.0	28.0	11.2	14.7	60.0	CEHD 70-20
70	M 25	20.0	35.0	11.2	14.7	75.0	CEHD 70-25
95	M 8	22.0	25.0	13.5	17.4	57.0	CEHD 95-8
95	M 10	22.0	25.0	13.5	17.4	57.0	CEHD 95-10
95	M 12	22.0	25.0	13.5	17.4	57.0	CEHD 95-12
95	M 14	22.0	26.0	13.5	17.4	57.0	CEHD 95-14
95	M 16	22.0	26.0	13.5	17.4	60.0	CEHD 95-16
95	M 20	22.0	28.0	13.5	17.4	60.0	CEHD 95-20
120	M 8	24.0	28.0	15.0	19.4	63.0	CEHD 120-8
120	M 10	24.0	28.0	15.0	19.4	63.0	CEHD 120-10
120	M 12	24.0	28.0	15.0	19.4	63.0	CEHD 120-12
120	M 14	24.0	28.0	15.0	19.4	63.0	CEHD 120-14
120	M 16	24.0	28.0	15.0	19.4	63.0	CEHD 120-16
120	M 20	24.0	31.0	15.0	19.4	70.0	CEHD 120-20
150	M 8	29.0	30.5	16.5	21.2	71.0	CEHD 150-8
150	M 10	29.0	30.5	16.5	21.2	71.0	CEHD 150-10
150	M 12	29.0	30.5	16.5	21.2	71.0	CEHD 150-12
150	M 14	29.0	30.5	16.5	21.2	71.0	CEHD 150-14
150	M 16	29.0	30.5	16.5	21.2	71.0	CEHD 150-16
150	M 20	29.0	30.5	16.5	21.2	71.0	CEHD 150-20
185	M 10	34.0	34.0	18.5	23.5	79.0	CEHD 185-10
185	M 12	34.0	34.0	18.5	23.5	79.0	CEHD 185-12
185	M 14	34.0	34.0	18.5	23.5	79.0	CEHD 185-14
185	M 16	34.0	34.0	18.5	23.5	79.0	CEHD 185-16
185	M 20	34.0	34.0	18.5	23.5	79.0	CEHD 185-20
240	M 10	39.0	38.0	21.0	26.5	93.0	CEHD 240-10
240	M 12	39.0	38.0	21.0	26.5	93.0	CEHD 240-12
240	M 14	39.0	38.0	21.0	26.5	93.0	CEHD 240-14
240	M 16	39.0	38.0	21.0	26.5	93.0	CEHD 240-16
240	M 20	39.0	38.0	21.0	26.5	93.0	CEHD 240-20
300	M 10	44.0	43.0	23.5	30.0	101.0	CEHD 300-10
300	M 12	44.0	43.0	23.5	30.0	101.0	CEHD 300-12
300	M 14	44.0	43.0	23.5	30.0	101.0	CEHD 300-14
300	M 16	44.0	43.0	23.5	30.0	101.0	CEHD 300-16
300	M 20	44.0	43.0	23.5	30.0	101.0	CEHD 300-20
400	M 10	47.0	50.0	26.8	34.8	116.0	CEHD 400-10
400	M 12	47.0	50.0	26.8	34.8	116.0	CEHD 400-12
400	M 14	47.0	50.0	26.8	34.8	116.0	CEHD 400-14
400	M 16	47.0	50.0	26.8	34.8	116.0	CEHD 400-16
400	M 20	47.0	50.0	26.8	34.8	116.0	CEHD 400-20
500	M 16	52.0	55.5	30.0	39.0	126.0	CEHD 500-16
500	M 20	52.0	55.5	30.0	39.0	126.0	CEHD 500-20
630	M 16	59.0	64.5	35.0	45.0	146.0	CEHD 630-16
630	M 20	59.0	64.5	35.0	45.0	146.0	CEHD 630-20
800	-	78.0	72.5	39.0	50.6	171.0	CEHD 800
1000	-	90.0	80.5	43.0	56.2	202.0	CEHD 1000

Product also available with V-knotch Inspection Vent & without Inspection Vents also.



# COPPER TUBULAR LUGS WITH LONG BARREL (LIGHT DUTY)



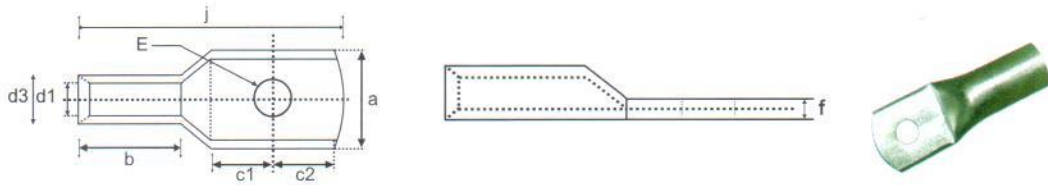
Size mm <sup>2</sup>	ØE	a	b	c1	c2	Ød1	Ød3	f	j	CAT NO.
2.5-5	M5	10.5	9	5	5	2.0	3.7	1.0	23.6	LB2K-05
4.0-6	M6	10.5	11	6	6	3.1	4.8	1.0	25.5	LB2K-06
6.0-6	M6	13.5	11	6	6	3.8	5.5	1.0	28.5	LB2K-07
10-6	M6	13.5	11	6	6	4.4	6.2	1.3	28.5	LB2K-08
16-6	M6	18.0	11	6	8	5.3	7.1	1.6	36.0	LB2K-09
25-6	M6	18.0	13	8	12	7.0	9.0	2.0	43.0	LB2K-10
35-6	M6	18.0	15	8	12	8.0	10.0	2.0	43.0	LB2K-11
35-8	M8	18.0	15	8	12	8.0	10.0	2.0	43.0	LB2K-12
50-6	M6	24.0	16	10	11	9.2	11.2	2.0	53.0	LB2K-13
50-8	M8	24.0	16	10	11	9.2	11.2	2.0	53.0	LB2K-14
50-10	M10	24.0	16	10	11	9.2	11.2	2.0	53.0	LB2K-15
70-8	M8	27.0	20	13	15	11.6	13.8	2.2	65.0	LB2K-16
70-10	M10	27.0	20	13	15	11.6	13.8	2.2	65.0	LB2K-17
70-12	M12	27.0	20	13	15	11.6	13.8	2.2	65.0	LB2K-18
95-10	M10	30.0	23	13	15	12.8	15.6	2.8	68.0	LB2K-19
95-12	M12	30.0	23	13	15	12.8	15.6	2.8	68.0	LB2K-20
120-10	M10	33.0	26	14	16	14.8	17.8	3.0	73.0	LB2K-21
120-12	M12	33.0	26	14	16	14.8	17.8	3.0	73.0	LB2K-22
120-16	M16	33.0	26	14	16	14.8	17.8	3.0	73.0	LB2K-23
150-10	M10	39.0	28	15	18	16.0	19.6	3.6	83.0	LB2K-24
150-12	M12	39.0	28	15	18	16.0	19.6	3.6	83.0	LB2K-25
150-16	M16	39.0	28	15	18	16.0	19.6	3.6	83.0	LB2K-26
185-12	M12	45.0	32	21	21	18.0	22.0	4.0	98.0	LB2K-27
185-16	M16	45.0	32	21	21	18.0	22.0	4.0	98.0	LB2K-28
225-16	M16	51.0	35	24	24	20.0	24.0	4.0	112.0	LB2K-231
240-16	M16	54.0	38	24	24	22.0	26.0	4.0	115.0	LB2K-29
240-20	M20	54.0	38	24	24	22.0	26.0	4.0	115.0	LB2K-30
300-16	M16	58.0	42	25	26	24.0	28.7	4.7	122.0	LB2K-31
300-20	M20	58.0	42	25	26	24.0	26.7	4.7	122.0	LB2K-32
400-20	M20	66.0	49	27	27	28.0	33.2	5.2	138.0	LB2K-33
500-20	M20	72.0	53	27	27	30.0	36.0	6.0	144.0	LB2K-34
630-20	M20	83.0	61	31	33	35.0	41.5	6.5	165.0	LB2K-35
800	-	98.0	67	37	38	39.0	46.3	7.3	198.0	LB2K-62
1000	-	135.0	76	45	45	43.0	53.8	10.8	255.0	LB2K-76

MATERIAL: COPPER IS - 191

FINISH: TIN PLATED



## COPPER TUBULAR LONG BARREL LUGS

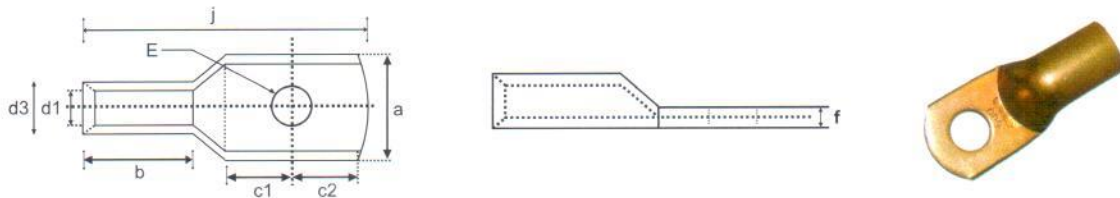


Size mm <sup>2</sup>	ØE	a	b	c1	c2	ød1	ød3	f	j	CAT NO.
25-8	M8	16	13	8	12	7.0	9.0	2.0	41	CS2K-282
35-8	M8	20	15	9	14	8.0	10.6	2.6	48	CS2K-283
50-8	M8	26	17	10	16	9.2	12.2	3.0	59	CS2K-284
70-10	M10	28	20	12	19	11.5	15.0	3.5	66	CS2K-285
95-12	M12	32	24	12	20	12.8	17.0	4.2	74	CS2K-286
120-12	M12	35	28	14	23	14.8	19.6	4.8	82	CS2K-287
150-12	M12	38	30	14	24	16.0	21.2	5.2	86	CS2K-288
185-12	M12	43	34	17	23	18.0	24.0	6.0	95	CS2K-289
240-16	M16	50	40	20	30	22.0	28.0	6.0	112	CS2K-290
300-16	M16	55	43	24	27	23.5	30.0	6.5	120	CS2K-291
400-20	M20	60	50	24	36	28.0	36.0	8.0	140	CS2K-292

MATERIAL: COPPER IS - 191

FINISH : TIN PLATED

## CRIMP'S COPPER TUBULAR SOLDERING LUGS

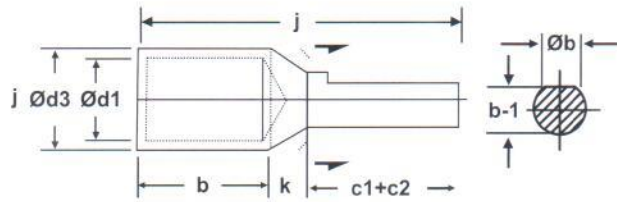


Amps	ØE	a	b	c1	c2	ød1	ød3	f	j	CAT NO.
15	3.2	7	7	6	4	3.9	4.8	0.9	19	CSS-201
30	5.1	9	9	6	5	5.2	6.3	1.1	23	CSS-202
50	6.4	14	14	9	9	8.1	9.5	1.4	36	CSS-203
100	9.5	19	19	11	11	10.9	12.7	1.8	49	CSS-204
150	9.5	23	24	13	13	13.9	15.9	2.0	57	CSS-205
200	12.7	27	28	14	14	16.6	19.0	2.4	68	CSS-206
300	12.7	28	33	20	19	19.0	22.2	3.2	80	CSS-207
400	15.9	32	38	21	21	22.2	25.4	3.2	89	CSS-208
500	19.0	38	43	25	25	25.4	28.6	3.2	105	CSS-209
600	19.0	44	47	27	27	27.8	31.8	4.0	115	CSS-210
800	23.8	47	56	28	28	31.7	38.1	6.4	121	CSS-211
1000	23.8	56	65	42	34	38.1	44.5	6.4	152	CSS-212
1000mm <sup>2</sup>	-	62	85	48	36	50.0	57.3	7.3	164	CSS-295

MATERIAL : COMMERCIAL GRADE COPPER

FINISH : TIN PLATED/NATURAL

# COPPER REDUCER TYPE PIN CONNECTORS

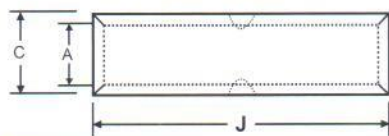


Size mm <sup>2</sup>	ød1	ød3	øb	b1	b	k	c1+c2	j	CAT NO.
2.5	2.5	4.7	4.5	4.5	6	4	10	20	RC2K-1
2.5	2.5	4.7	3.8	3.3	6	4	10	20	RC2K-7
4	2.8	4.7	4.5	4.0	6	4	10	20	RC2K-15
4	2.8	4.7	3.8	3.3	6	4	10	20	RC2K-16
6	3.1	4.7	4.5	4.0	6	4	10	20	RC2K-17
6	3.1	4.7	3.8	3.3	6	4	10	20	RC2K-18
10	3.8	5.5	4.5	4.0	9	4	10	23	RC2K-19
10	3.8	5.5	3.8	3.3	9	4	10	23	RC2K-20
10	4.4	6.2	4.5	4.0	9	4	10	23	RC2K-21
10	4.4	6.2	3.8	3.3	9	4	10	23	RC2K-22
16	5.3	7.1	6.0	5.5	12	5	15	32	RC2K-23
16	5.3	7.1	6.0	5.5	12	5	20	37	RC2K-24
16	5.3	7.1	3.8	3.3	12	5	13	30	RC2K-2
25	7.0	9.0	6.0	5.5	12	5	15	32	RC2K-25
25	7.0	9.0	7.5	6.5	12	5	20	37	RC2K-3
35	8.0	10.0	7.5	6.5	12	5	20	37	RC2K-4
50	9.2	11.2	7.5	6.5	18	5	20	41	RC2K-26
50	10.4	14.0	14.0	13.0	18	7	24	49	RC2K-5
70	11.5	13.8	7.5	6.5	18	5	20	43	RC2K-27
70	11.5	13.8	11.5	10.5	18	5	25	48	RC2K-6
70	11.5	13.8	11.5	10.5	18	5	32	55	RC2K-28
95	12.8	15.6	11.5	10.5	20	6	25	51	RC2K-29
95	12.8	15.6	15.6	14.0	20	6	27	53	RC2K-8
95	12.8	15.6	7.5	6.5	20	6	22	48	RC2K-31
95	12.8	15.6	12.8	11.8	20	6	32	58	RC2K-32
120	14.8	17.8	11.5	10.5	22	6	25	53	RC2K-33
120	14.8	17.8	7.5	6.5	22	6	22	50	RC2K-34
120	14.8	17.8	11.5	10.5	22	6	32	60	RC2K-35
120	14.8	17.8	15.6	14.0	22	6	32	60	RC2K-36
150	16.0	19.6	15.6	14.0	26	6	32	64	RC2K-10
150	16.0	19.6	11.5	10.5	26	6	32	64	RC2K-37
185	18.0	22.0	15.6	14.0	32	6	32	70	RC2K-30
185	18.0	22.0	11.5	10.5	32	6	32	70	RC2K-38
225	20.0	26.0	15.6	14.0	38	8	32	78	RC2K-39
225	20.0	26.0	21.0	18.0	38	8	42	88	RC2K-46
225	20.0	26.0	16.0	15.0	38	8	42	88	RC2K-42
240	22.0	26.0	16.0	15.0	38	8	42	88	RC2K-44
240	22.0	26.0	15.6	14.0	38	8	32	78	RC2K-43
300	24.0	26.7	16.0	15.0	42	8	42	92	RC2K-45
300	24.0	28.7	15.6	14.0	42	8	32	82	RC2K-47
400	27.0	33.2	15.6	14.0	46	12	32	90	RC2K-101

MATERIAL: COPPER IS - 191

FINISH: TIN PLATED

# COPPER TUBULAR INLINE CONNECTORS



CABLE mm <sup>2</sup>	A	C	J	CAT. NO.
1.5	1.8	3.7	15	CEF 1.5-15
			22	CEF 1.5-22
2.5	2.4	4.0	15	CEF 2.5-15
			22	CEF 2.5-22
4	3.1	4.8	15	CEF 4-15
			25	CEF 4-25
6	3.8	5.5	15	CEF 6-15
			22	CEF 6-22
			25	CEF 6-25
10	4.5	6.2	20	CEF 10-20
			22	CEF 10-22
			30	CEF 10-30
16	5.4	7.1	20	CEF 16-20
			35	CEF 16-35
25	6.8	8.8	32	CEF 25-32
			40	CEF 25-40
			47	CEF 25-47
35	8.2	10.6	36	CEF 35-36
			45	CEF 35-45
50	9.5	12.4	40	CEF 50-40
			47	CEF 50-47
			50	CEF 50-50
70	11.2	14.7	40	CEF 70-40
			45	CEF 70-45
			50	CEF 70-50
95	13.5	17.4	45	CEF 95-45
			50	CEF 95-50
			60	CEF 95-60
120	15.0	19.4	45	CEF 120-45
			65	CEF 120-65
150	16.5	21.2	55	CEF 150-55
			65	CEF 150-65
185	18.5	23.5	65	CEF 185-65
			75	CEF 185-75
240	21.0	26.5	80	CEF 240-80
			85	CEF 240-85
			89	CEF 240-89
300	23.5	30.0	85	CEF 300-85
			90	CEF 300-90
400	26.8	34.8	90	CEF 400-90
			100	CEF 400-100
500	30.0	39.0	100	CEF 500-100
			110	CEF 500-110
630	35.0	45.0	110	CEF 630-110
			120	CEF 630-120
800	39.0	50.6	150	CEF 800-150
1000	43.0	56.2	170	CEF 1000-170

MATERIAL: COPPER BS - 1977

FINISH: ELECTRO TINNED

**GROUP  
CRYSTAL**