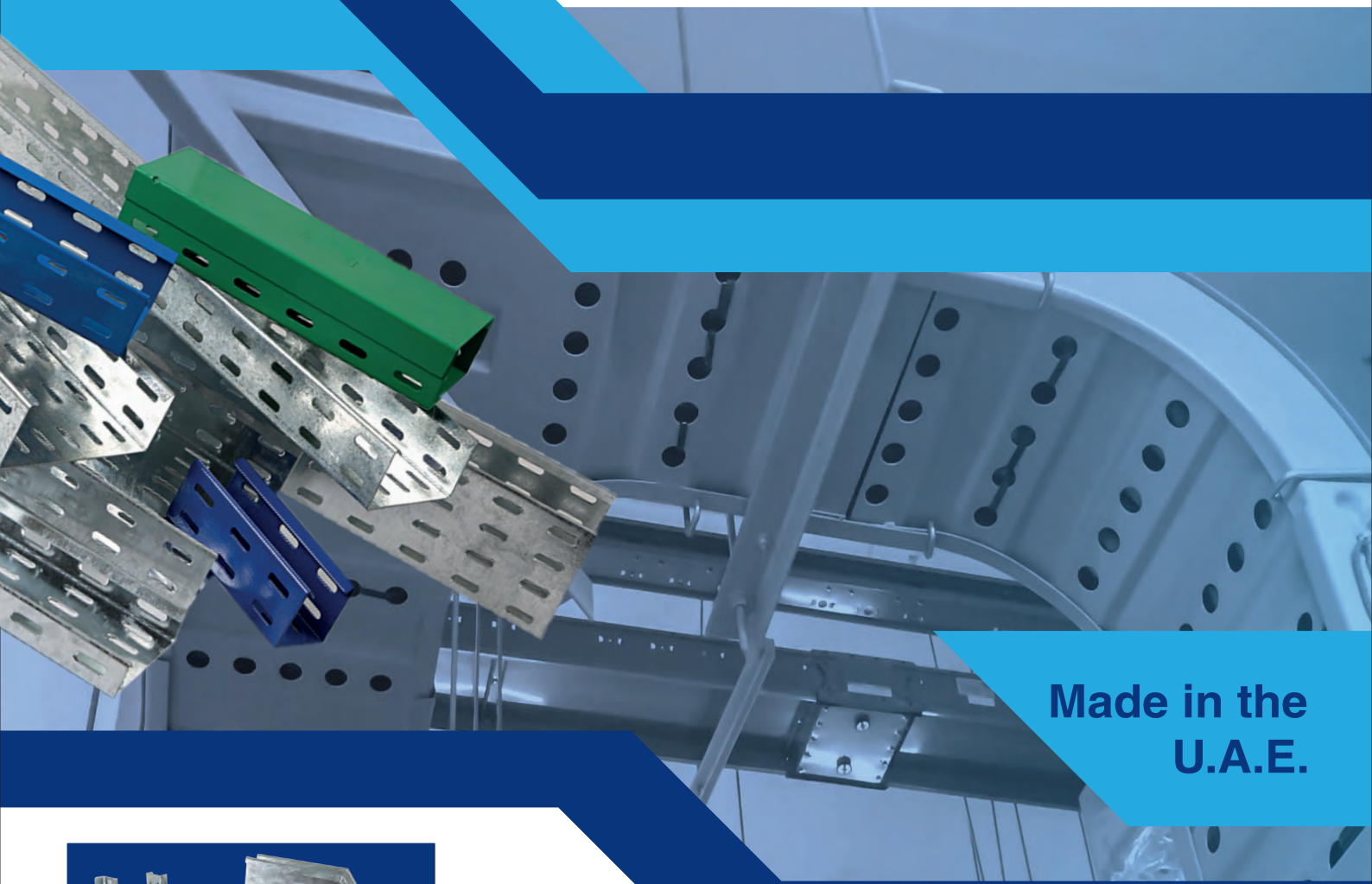
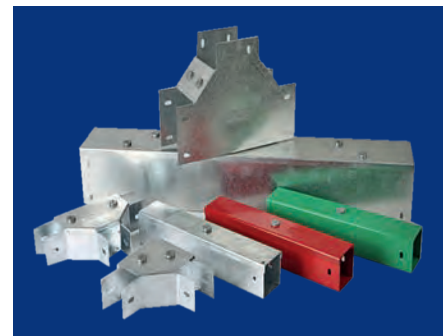
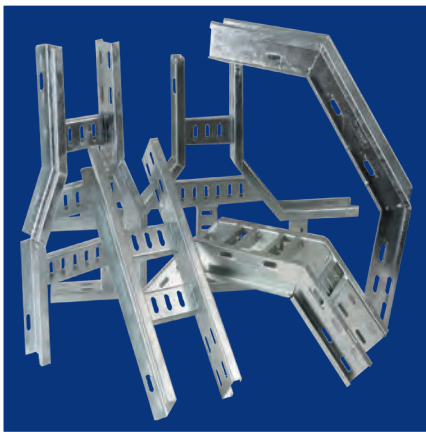


DECODUCT®

AN EXHAUSTIVE RANGE OF
METAL CABLE MANAGEMENT SYSTEMS



Made in the
U.A.E.



Interplast Electrical Products



STANDARDS AND CERTIFICATION

DECODUCT CMS - METAL

Conforms to: BSEN 61537:2007, NEMA VEI:2002, BSI BSEN 50085-1:2005, BSI BSEN 50085-2:2006



APPROVALS FROM





YOUR TRUSTWORTHY BUSINESS PARTNER



INTERPLAST is a member of manufacturing conglomerate of Group Harwal with fully integrated manufacturing facilities spread across UAE, KSA and Russia.

Combining innovation and excellence, Harwal Group is the largest plastics converter in the Middle East. The Group converts over 200,000 metric tons of plastic and 20,000 tons of metal every year delivered through its ISO 9001 certified companies. As an award winning organization, Harwal Group combines its technical capability with evolving market trends to bring superior products and services to its valued customers. Harwal group has 26 business units with manufacturing and sales facilities across the globe. Founded in 1938, Harwal Group currently operates from its headquarters in the UAE.

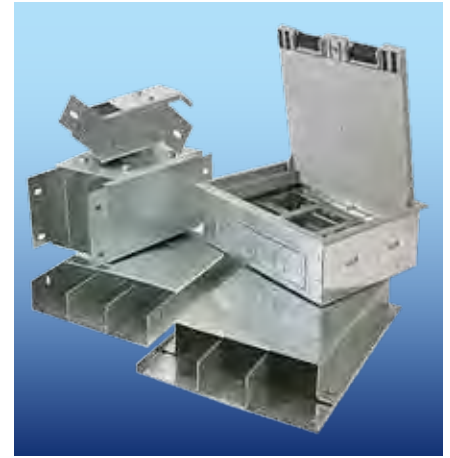
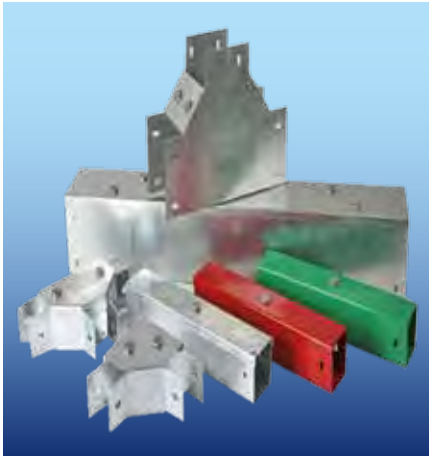
INTERPLAST has over 36 years of expertise in engineering and manufacturing technologies which is indispensable while offering innovative products under the brand names such as DECODUCT: Conduits, Trunking, Cable Trays, Ladders, Channels and Accessories. EDISON: Wiring Devices and Accessories. INTERGARD: Cable Tiles and Warning Tapes. Interplast Electrical Products with its diverse product basket offers 'One-Stop-Solution' for low voltage power, communication and data distribution requirements of the ever growing construction industry.

INTERPLAST Electrical Systems provide the broadest line of electrical products and systems manufactured in the GCC meeting the highest quality standards and international levels of certification found only in premier global brands.



YOUR TRUSTWORTHY BUSINESS PARTNER

Decoduct Cable Management Systems



DECODUCT Cable Management Systems include conduits, trunking, trays, ladders, channels, accessories, industrial cable management systems in PVC and metal and are manufactured to meet the Gulf Specifications as well as International standards. Decoduct Cable Management System has won the diamond mark certificate from ASTA BEAB of the UK confirming compliance with the relevant BSEN standards. ASTA BEAB is a reputable and relevant UK certification body for electrical products. DECODUCT LSF cable management systems meet all the mechanical and physical properties of rigid CMS and in the event of a fire, the emission of the smoke and fume is within safety levels and much lower than normal rigid CMS.

Edison Electrical Accessories



The EDISON range of products includes switches, sockets, electrical wiring devices and accessories under the series Dura, Elite, Designer, Royale, Weatherproof, Euro, Metalclad etc. The range from EDISON comes with exotic designs and colour schemes and can be offered in custom designs to match any decor. All wiring accessories are manufactured to Gulf and international specifications and our fully equipped laboratory is capable of carrying out all the tests specified by the relevant standards.

Intergard Cable protection & Warning Systems

As a substitute to Concrete cable cover tiles, Interplast manufactures protection tapes which are particularly suitable as protective and warning markers. The INTERGARD range includes PVC, HDPE and LDPE cable covers, boards and tapes for warning and protection of all kinds of cable distribution systems. Features include approvals from DEWA, FEWA, SEWA & ADWEA, light weight for easy transportation, handling, storage & installation, specially designed shape for lengthwise rigidity, made from materials resistant to ground chemicals, self coloured for permanent bright colouration enhancing visibility, clearly printed with identification, instruction or warnings, joints allowing for strong longitudinal interlock, design allowing lateral joining to cover wider protection area, manufacturing flexibility allowing variety of colours, printing & sizes to be made to order, compliance with BS 2484, ex-stock availability.



DECODUCT METAL CABLE MANAGEMENT SYSTEMS

INTERPLAST strives to be the leader in superior quality, high performing and innovative cable management systems. INTERPLAST Metal Cable Management systems are offered in mill or pre-galvanized steel, Hot Dip Galvanized and epoxy coated finishes. The DECODUCT Metal Cable Management Systems are engineered to meet demanding industry load, regulatory and environment regulations.

More & more Engineers, Owners, Contractors and Distributors prefer the reliability, strength and personal service that INTERPLAST DECODUCT can provide.

Interplast Metal CMS Factory

Strategically and conveniently located in Dubai in Jebel Ali Industrial Area, INTERPLAST Metal Cable Management plant is equipped with the state-of-art machineries for producing heavy duty Cable Trays, Trunking, Ladders, channels and accessories.

Heavy duty Double point Power Presses, CNC Turret punching, CNC bending and shearing machines have been installed at the plant to meet any customer requirement.

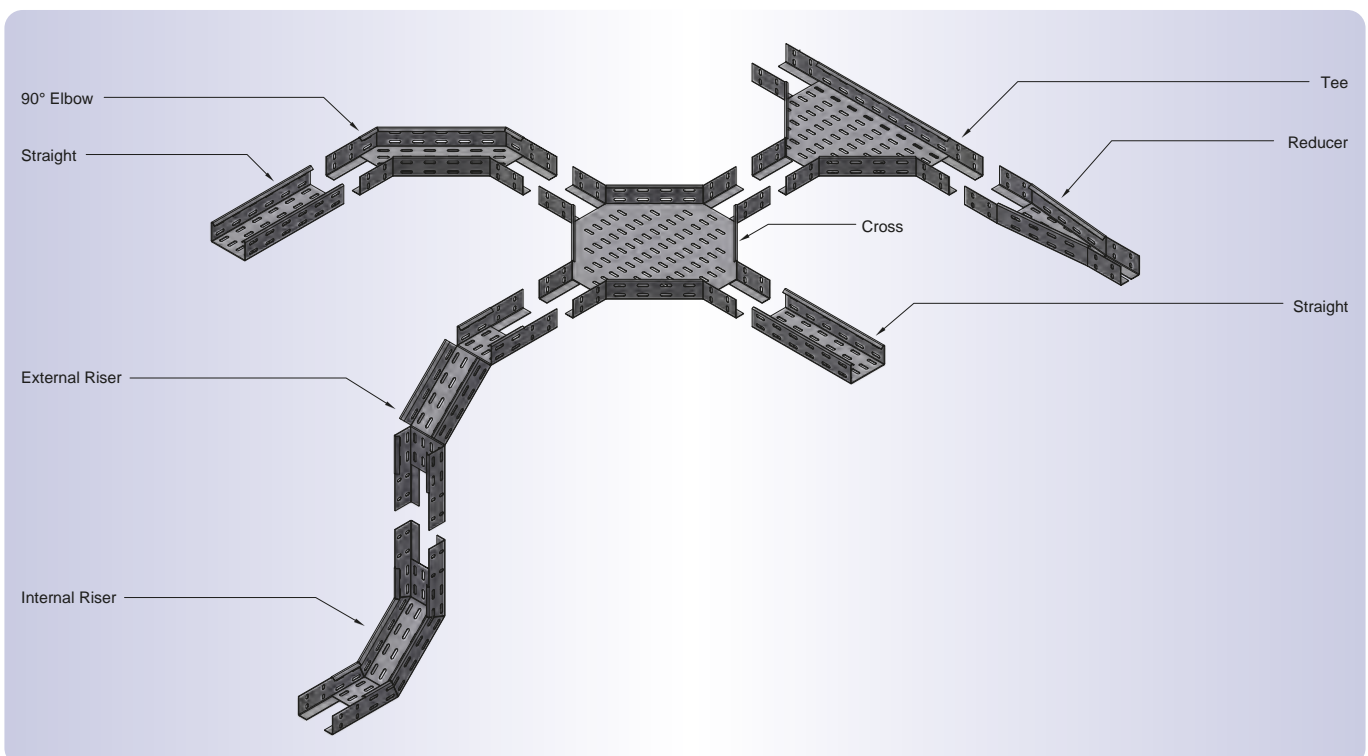
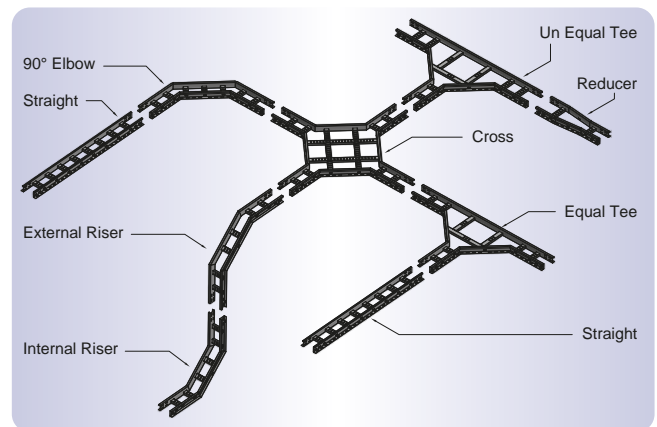
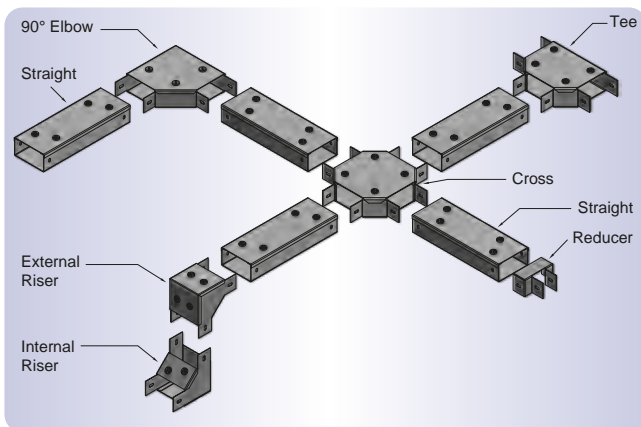
In-house most modern tool room is an added advantage for quick tool manufacturing and maintenance of sophisticated tools. A well experienced team of experts add to the strength of manufacturing.

Major product categories of Decoduct Metal cable management systems include

- Cable tray and accessories.
- Floor distribution system.

- Cable trunking and accessories.
- Channel and support system.

- Cable ladder and accessories.





DECODUCT METAL MANUFACTURING FACILITIES



CONTENTS

METAL CABLE TRAY SYSTEM 8-22

METAL CABLE TRUNKING SYSTEM 23-31

METAL CABLE LADDER SYSTEM 32-40

METAL FLOOR DISTRIBUTION SYSTEM 41-45

METAL CHANNELS AND SUPPORT SYSTEM 46-50

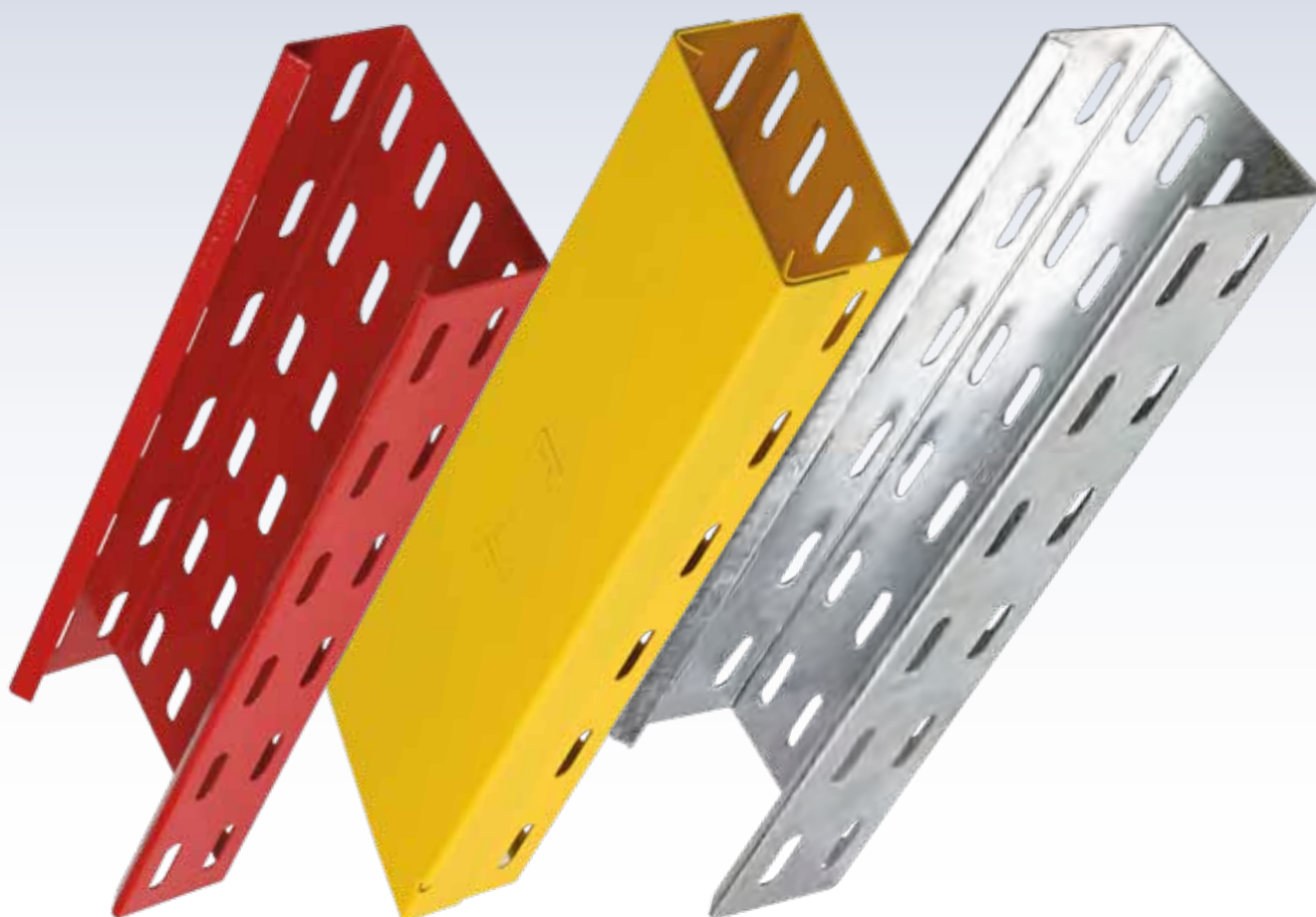
GENERAL INFORMATION 51-55

**MANUFACTURED IN ACCORDANCE
WITH BRITISH STANDARDS**

**Tray and Accessories: BS EN 10143
BS EN 1461
BS 1449: Part 1**



**DECODUCT
METAL
CABLE
TRAY
SYSTEM**



DECODUCT METAL CABLE TRAY SYSTEM - HEAVY DUTY

Finish : Hot Dip Galvanised after fabrication, return flange, 50mm side height, Standard length 3 Metre

Item Code	Description		Item Code	Description
EMCTDTH0505010HG	Cable Tray 50 x 50 x 1.0 mm HDG		EMCTDTH2255015HG	Cable Tray 225 x 50 x 1.5 mm HDG
EMCTDTH0755010HG	Cable Tray 75 x 50 x 1.0 mm HDG		EMCTDTH3005012HG	Cable Tray 300 x 50 x 1.2 mm HDG
EMCTDTH1005010HG	Cable Tray 100 x 50 x 1.0 mm HDG		EMCTDTH3005015HG	Cable Tray 300 x 50 x 1.5 mm HDG
EMCTDTH1005012HG	Cable Tray 100 x 50 x 1.2 mm HDG		EMCTDTH4505015HG	Cable Tray 450 x 50 x 1.5 mm HDG
EMCTDTH1505010HG	Cable Tray 150 x 50 x 1.0 mm HDG		EMCTDTH4505020HG	Cable Tray 450 x 50 x 2.0 mm HDG
EMCTDTH1505012HG	Cable Tray 150 x 50 x 1.2 mm HDG		EMCTDTH6005015HG	Cable Tray 600 x 50 x 1.5 mm HDG
EMCTDTH2005012HG	Cable Tray 200 x 50 x 1.2 mm HDG		EMCTDTH6005020HG	Cable Tray 600 x 50 x 2.0 mm HDG
EMCTDTH2005015HG	Cable Tray 200 x 50 x 1.5 mm HDG		EMCTDTH7505020HG	Cable Tray 750 x 50 x 2.0 mm HDG
EMCTDTH2255012HG	Cable Tray 225 x 50 x 1.2 mm HDG		EMCTDTH9005020HG	Cable Tray 900 x 50 x 2.0 mm HDG



Product Selection Guide	Other Height Options
Replace 50 by 75	75mm
Replace 50 by 100	100mm
	Other Finish Options
Replace HG by PG	Pre Galvanised (PG)
Replace HG by HGGR	Epoxy Coated Green
Replace HG by HGWH	Epoxy Coated White

DECODUCT METAL CABLE TRAY COVER, 15mm FLANGE HEIGHT, STRAIGHT FLANGE

Finish : Hot Dip Galvanised after fabrication, Standard length 3 Metre

Item Code	Description		Item Code	Description
EMCTCVR0505010HG	Cable Tray Cover 50 x 1.0mm HDG		EMCTCVR3005012HG	Cable Tray Cover 300 x 1.2mm HDG
EMCTCVR0755010HG	Cable Tray Cover 75 x 1.0mm HDG		EMCTCVR3005015HG	Cable Tray Cover 300 x 1.5mm HDG
EMCTCVR0755012HG	Cable Tray Cover 75 x 1.2mm HDG		EMCTCVR4505010HG	Cable Tray Cover 450 x 1.0mm HDG
EMCTCVR1005010HG	Cable Tray Cover 100 x 1.0mm HDG		EMCTCVR4505012HG	Cable Tray Cover 450 x 1.2mm HDG
EMCTCVR1005012HG	Cable Tray Cover 100 x 1.2mm HDG		EMCTCVR4505015HG	Cable Tray Cover 450 x 1.5mm HDG
EMCTCVR1505010HG	Cable Tray Cover 150 x 1.0mm HDG		EMCTCVR6005010HG	Cable Tray Cover 600 x 1.0mm HDG
EMCTCVR1505012HG	Cable Tray Cover 150 x 1.2mm HDG		EMCTCVR6005015HG	Cable Tray Cover 600 x 1.5mm HDG
EMCTCVR2005010HG	Cable Tray Cover 200 x 1.0mm HDG		EMCTCVR6005020HG	Cable Tray Cover 600 x 2.0mm HDG
EMCTCVR2005012HG	Cable Tray Cover 200 x 1.2mm HDG		EMCTCVR7505010HG	Cable Tray Cover 750 x 1.0mm HDG
EMCTCVR2005015HG	Cable Tray Cover 200 x 1.5mm HDG		EMCTCVR7505015HG	Cable Tray Cover 750 x 1.5mm HDG
EMCTCVR2255010HG	Cable Tray Cover 225 x 1.0mm HDG		EMCTCVR7505020HG	Cable Tray Cover 750 x 2.0mm HDG
EMCTCVR2255012HG	Cable Tray Cover 225 x 1.2mm HDG		EMCTCVR9005010HG	Cable Tray Cover 900 x 1.0mm HDG
EMCTCVR2255015HG	Cable Tray Cover 225 x 1.5mm HDG		EMCTCVR9005015HG	Cable Tray Cover 900 x 1.5mm HDG
EMCTCVR3005010HG	Cable Tray Cover 300 x 1.0mm HDG		EMCTCVR9005020HG	Cable Tray Cover 900 x 2.0mm HDG





Product Selection Guide	Other Finish Options
Replace HG by PG	Pre Galvanised (PG)
Replace HG by HGGR	Epoxy Coated Green
Replace HG by HGWH	Epoxy Coated White

Other Sizes, Thickness & colours available upon request / re-confirmation.

Product codes may vary slightly.

DECODUCT METAL CABLE TRAY ACCESSORIES - HEAVY DUTY



90° Bend - Hot Dip Galvanised (HDG)

Item Code	Description		Other Height Options
EMFCT90B050510HG	C Tray 90° Bend 50 x 50 x 1.0mm HG		75mm
EMFCT90B075510HG	C Tray 90° Bend 75 x 50 x 1.0mm HG		100mm
EMFCT90B100512HG	C Tray 90° Bend 100 x 50 x 1.2mm HG		
EMFCT90B150512HG	C Tray 90° Bend 150 x 50 x 1.2mm HG		
EMFCT90B200515HG	C Tray 90° Bend 200 x 50 x 1.5mm HG		
EMFCT90B225515HG	C Tray 90° Bend 225 x 50 x 1.5mm HG		
EMFCT90B300515HG	C Tray 90° Bend 300 x 50 x 1.5mm HG		
EMFCT90B450520HG	C Tray 90° Bend 450 x 50 x 2.0mm HG		
EMFCT90B600520HG	C Tray 90° Bend 600 x 50 x 2.0mm HG		
EMFCT90B750520HG	C Tray 90° Bend 750 x 50 x 2.0mm HG		
EMFCT90B900520HG	C Tray 90° Bend 900 x 50 x 2.0mm HG		

Product Selection Guide	Other Finish Options
Replace HG by PG	Pre Galvanised (PG)
Replace HG by HGGR	Epoxy Coated Green
Replace HG by HGWH	Epoxy Coated White

45° Bend options available upon request / re-confirmation.

Equal Tee Hot Dip Galvanised (HDG)

Item Code	Description		Other Height Options
EMCTET0505010HG	C Tray Equal Tee 50 x 50 x 1.0mm HG		75mm
EMCTET0755010HG	C Tray Equal Tee 75 x 50 x 1.0mm HG		100mm
EMCTET1005012HG	C Tray Equal Tee 100 x 50 x 1.2mm HG		
EMCTET1505012HG	C Tray Equal Tee 150 x 50 x 1.2mm HG		
EMCTET2005015HG	C Tray Equal Tee 200 x 50 x 1.5mm HG		
EMCTET2255015HG	C Tray Equal Tee 225 x 50 x 1.5mm HG		
EMCTET3005015HG	C Tray Equal Tee 300 x 50 x 1.5mm HG		
EMCTET4505020HG	C Tray Equal Tee 450 x 50 x 2.0mm HG		
EMCTET6005020HG	C Tray Equal Tee 600 x 50 x 2.0mm HG		
EMCTET7505020HG	C Tray Equal Tee 750 x 50 x 2.0mm HG		
EMCTET9005020HG	C Tray Equal Tee 900 x 50 x 2.0mm HG		

Product Selection Guide	Other Finish Options
Replace HG by PG	Pre Galvanised (PG)
Replace HG by HGGR	Epoxy Coated Green
Replace HG by HGWH	Epoxy Coated White

DECODUCT METAL CABLE TRAY ACCESSORIES - HEAVY DUTY

Unequal Tee - Hot Dip Galvanised (HDG)

Item Code	Description		Other Height Options		
EMTUET15151012HG	C Tray Unequal Tee 150 x 150 x 100 x 50 x 1.2mm HG		75mm		
EMTUET15101012HG	C Tray Unequal Tee 150 x 100 x 100 x 50 x 1.2mm HG	100mm			
EMTUET22510015HG	C Tray Unequal Tee 225 x 225 x 100 x 50 x 1.5mm HG	Product Selection Guide	Other Finish Options		
EMUET301030515HG	C Tray Unequal Tee 300 x 100 x 300 x 50 x 1.5mm HG			Replace HG by PG	Pre Galvanised (PG)
EMUET300151015HG	C Tray Unequal Tee 300 x 150 x 100 x 50 x 1.5mm HG			Replace HG by HGGR	Epoxy Coated Green
EMUET300153015HG	C Tray Unequal Tee 300 x 150 x 300 x 50 x 1.5mm HG			Replace HG by HGWH	Epoxy Coated White
EMUET454520520HG	C Tray Unequal Tee 450 x 450 x 200 x 50 x 2.0mm HG				
EMUET909022520HG	C Tray Unequal Tee 900 x 900 x 225 x 50 x 2.0mm HG				
EMUET902090520HG	C Tray Unequal Tee 900 x 200 x 900 x 50 x 2.0mm HG				
EMUET909010520HG	C Tray Unequal Tee 900 x 900 x 100 x 50 x 2.0mm HG				

Equal Crossover - Hot Dip Galvanised (HDG)

Item Code	Description		Other Height Options		
EMCTECCR0505010HG	C Tray EQ Crossover 50 x 50 x 1.0mm HG		75mm		
EMCTECCR0755010HG	C Tray EQ Crossover 75 x 50 x 1.0mm HG	100mm			
EMCTECCR1005012HG	C Tray EQ Crossover 100 x 50 x 1.2mm HG	Product Selection Guide	Other Finish Options		
EMCTECCR1505012HG	C Tray EQ Crossover 150 x 50 x 1.2mm HG			Replace HG by PG	Pre Galvanised (PG)
EMCTECCR2005015HG	C Tray EQ Crossover 200 x 50 x 1.5mm HG			Replace HG by HGGR	Epoxy Coated Green
EMCTECCR2255015HG	C Tray EQ Crossover 225 x 50 x 1.5mm HG			Replace HG by HGWH	Epoxy Coated White
EMCTECCR3005015HG	C Tray EQ Crossover 300 x 50 x 1.5mm HG				
EMCTECCR4505020HG	C Tray EQ Crossover 450 x 50 x 2.0mm HG				
EMCTECCR6005020HG	C Tray EQ Crossover 600 x 50 x 2.0mm HG				
EMTECCR07505020HG	C Tray EQ Crossover 750 x 50 x 2.0mm HG				
EMTECCR09005020HG	C Tray EQ Crossover 900 x 50 x 2.0mm HG				

Unequal Crossover options available upon request / re-confirmation.

90° Outside Riser - Hot Dip Galvanised (HDG)

Item Code	Description		Other Height Options		
EMFTOR90050510HG	C Tray 90° OS Riser 50 x 50 x 1.0mm HG		75mm		
EMFTOR90075510HG	C Tray 90° OS Riser 75 x 50 x 1.0mm HG	100mm			
EMFTOR90100512HG	C Tray 90° OS Riser 100 x 50 x 1.2mm HG	Product Selection Guide	Other Finish Options		
EMFTOR90150512HG	C Tray 90° OS Riser 150 x 50 x 1.2mm HG			Replace HG by PG	Pre Galvanised (PG)
EMFTOR90200515HG	C Tray 90° OS Riser 200 x 50 x 1.5mm HG			Replace HG by HGGR	Epoxy Coated Green
EMFTOR90225515HG	C Tray 90° OS Riser 225 x 50 x 1.5mm HG			Replace HG by HGWH	Epoxy Coated White
EMFTOR90300515HG	C Tray 90° OS Riser 300 x 50 x 1.5mm HG				
EMFTOR90450520HG	C Tray 90° OS Riser 450 x 50 x 2.0mm HG				
EMFTOR90600520HG	C Tray 90° OS Riser 600 x 50 x 2.0mm HG				
EMFTOR90750520HG	C Tray 90° OS Riser 750 x 50 x 2.0mm HG				
EMFTOR90900520HG	C Tray 90° OS Riser 900 x 50 x 2.0mm HG				

45° Riser options available upon request / re-confirmation.

Other Sizes, Thickness & colours available upon request / re-confirmation.

Accessories available with cover (optional)

Product codes may vary slightly.

DECODUCT METAL CABLE TRAY ACCESSORIES - HEAVY DUTY

90° Inside Riser - Hot Dip Galvanised (HDG)

Item Code	Description
EMFIR90050510HG	C Tray 90° IS Riser 50 x 50 x 1.0mm HG
EMFIR90075510HG	C Tray 90° IS Riser 75 x 50 x 1.0mm HG
EMFIR90100512HG	C Tray 90° IS Riser 100 x 50 x 1.2mm HG
EMFIR90150512HG	C Tray 90° IS Riser 150 x 50 x 1.2mm HG
EMFIR90200515HG	C Tray 90° IS Riser 200 x 50 x 1.5mm HG
EMFIR90225515HG	C Tray 90° IS Riser 225 x 50 x 1.5mm HG
EMFIR90300515HG	C Tray 90° IS Riser 300 x 50 x 1.5mm HG
EMFIR90450520HG	C Tray 90° IS Riser 450 x 50 x 2.0mm HG
EMFIR90600520HG	C Tray 90° IS Riser 600 x 50 x 2.0mm HG
EMFIR90750520HG	C Tray 90° IS Riser 750 x 50 x 2.0mm HG
EMFIR90900520HG	C Tray 90° IS Riser 900 x 50 x 2.0mm HG

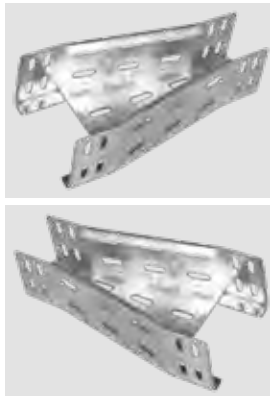


Other Height Options	
75mm	
100mm	
Product Selection Guide	Other Finish Options
Replace HG by PG	Pre Galvanised (PG)
Replace HG by HGGR	Epoxy Coated Green
Replace HG by HGWH	Epoxy Coated White

45° Riser options available upon request / re-confirmation.

Straight Reducer - Hot Dip Galvanised (HDG)

Item Code	Description
EMCR1505100512HG	C Tray Straight Reducer 150 x 100 x 50 x 1.2mm HG
EMCR0300100515HG	C Tray Straight Reducer 300 x 100 x 50 x 1.5mm HG
EMCR3005225515HG	C Tray Straight Reducer 300 x 225 x 50 x 1.5mm HG
EMCR4503005020HG	C Tray Straight Reducer 450 x 300 x 50 x 2.0mm HG
EMCR0600450520HG	C Tray Straight Reducer 600 x 450 x 50 x 2.0mm HG
EMCR0750300520HG	C Tray Straight Reducer 750 x 300 x 50 x 2.0mm HG
EMCR0750450520HG	C Tray Straight Reducer 750 x 450 x 50 x 2.0mm HG
EMCR0750600520HG	C Tray Straight Reducer 750 x 600 x 50 x 2.0mm HG
EMCR0900600520HG	C Tray Straight Reducer 900 x 600 x 50 x 2.0mm HG
EMCR0900750520HG	C Tray Straight Reducer 900 x 750 x 50 x 2.0mm HG

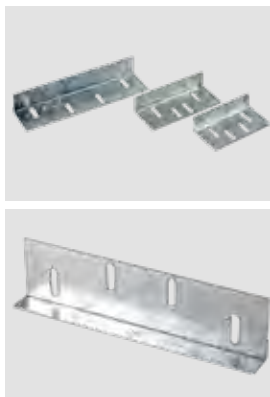


Other Height Options	
75mm	
100mm	
Product Selection Guide	Other Finish Options
Replace HG by PG	Pre Galvanised (PG)
Replace HG by HGGR	Epoxy Coated Green
Replace HG by HGWH	Epoxy Coated White

Left Hand & Right Hand reducer options available upon request / re-confirmation.

Coupler - Hot Dip Galvanised (HDG)

Item Code	Description
EMCTCPL05010HG	C Tray Straight Coupler 50 x 1.0mm HG
EMCTCPL05012HG	C Tray Straight Coupler 50 x 1.2mm HG
EMCTCPL05015HG	C Tray Straight Coupler 50 x 1.5mm HG
EMCTCPL05020HG	C Tray Straight Coupler 50 x 2.0mm HG
EMCTCPL10010HG	C Tray Straight Coupler 100 x 1.0mm HG
EMCTCPL10012HG	C Tray Straight Coupler 100 x 1.2mm HG
EMCTCPL10015HG	C Tray Straight Coupler 100 x 1.5mm HG
EMCTCPL10020HG	C Tray Straight Coupler 100 x 2.0mm HG

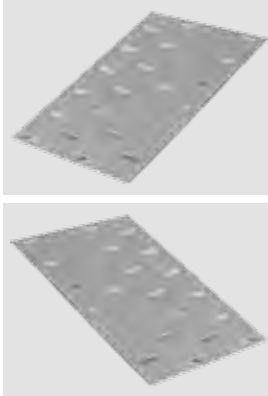


Other Height Options	
75mm	
100mm	
Product Selection Guide	Other Finish Options
Replace HG by PG	Pre Galvanised (PG)
Replace HG by HGGR	Epoxy Coated Green
Replace HG by HGWH	Epoxy Coated White

DECODUCT METAL CABLE TRAY ACCESSORIES - HEAVY DUTY

Fish Plate - Hot Dip Galvanised (HDG)

Item Code	Description
EMCTFPL0505010HG	C Tray Fish Plate 50 x 1.0mm HG
EMCTFPL0755010HG	C Tray Fish Plate 75 x 1.0mm HG
EMCTFPL1005012HG	C Tray Fish Plate 100 x 1.2mm HG
EMCTFPL1505012HG	C Tray Fish Plate 150 x 1.2mm HG
EMCTFPL2005012HG	C Tray Fish Plate 200 x 50 x 1.2mm HG
EMCTFPL2005015HG	C Tray Fish Plate 200 x 50 x 1.5mm HG
EMCTFPL2255012HG	C Tray Fish Plate 225 x 50 x 1.2mm HG
EMCTFPL2255015HG	C Tray Fish Plate 225 x 50 x 1.5mm HG



Item Code	Description
EMCTFPL3005012HG	C Tray Fish Plate 300 x 50 x 1.2mm HG
EMCTFPL3005015HG	C Tray Fish Plate 300 x 50 x 1.5mm HG
EMCTFPL4505015HG	C Tray Fish Plate 450 x 50 x 1.5mm HG
EMCTFPL4505020HG	C Tray Fish Plate 450 x 50 x 2.0mm HG
EMCTFPL6005015HG	C Tray Fish Plate 600 x 50 x 1.5mm HG
EMCTFPL6005020HG	C Tray Fish Plate 600 x 50 x 2.0mm HG
EMCTFPL7505020HG	C Tray Fish Plate 750 x 50 x 2.0mm HG
EMCTFPL9005020HG	C Tray Fish Plate 900 x 50 x 2.0mm HG



Other Height Options

75mm

100mm

Product Selection Guide

Other Finish Options

Replace HG by PG

Pre Galvanised (PG)

Replace HG by HGGR

Epoxy Coated Green

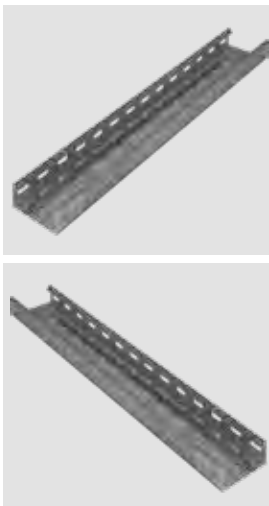
Replace HG by HGWH

Epoxy Coated White

DECODUCT METAL CABLE TRAY SYSTEM - MEDIUM DUTY

Finish : Hot Dip Galvanised after fabrication, return flange, 25mm side height, Standard length 3 Metre

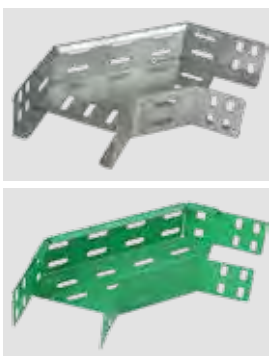
Item Code	Description
EMCTDTM0502510HG	Cable Tray 50 x 25 x 1.0 mm HDG
EMCTDTM0502512HG	Cable Tray 50 x 25 x 1.2 mm HDG
EMCTDTM0502515HG	Cable Tray 50 x 25 x 1.5 mm HDG
EMCTDTM0752510HG	Cable Tray 75 x 25 x 1.0 mm HDG
EMCTDTM0752512HG	Cable Tray 75 x 25 x 1.2 mm HDG
EMCTDTM0752515HG	Cable Tray 75 x 25 x 1.5 mm HDG
EMCTDTM1002510HG	Cable Tray 100 x 25 x 1.0 mm HDG
EMCTDTM1002512HG	Cable Tray 100 x 25 x 1.2 mm HDG
EMCTDTM1002515HG	Cable Tray 100 x 25 x 1.5 mm HDG
EMCTDTM1502510HG	Cable Tray 150 x 25 x 1.0 mm HDG
EMCTDTM1502512HG	Cable Tray 150 x 25 x 1.2 mm HDG
EMCTDTM1502515HG	Cable Tray 150 x 25 x 1.5 mm HDG
EMCTDTM2002512HG	Cable Tray 200 x 25 x 1.2 mm HDG
EMCTDTM2002515HG	Cable Tray 200 x 25 x 1.5 mm HDG
EMCTDTM2252512HG	Cable Tray 225 x 25 x 1.2 mm HDG
EMCTDTM2252515HG	Cable Tray 225 x 25 x 1.5 mm HDG
EMCTDTM3002512HG	Cable Tray 300 x 25 x 1.2 mm HDG
EMCTDTM3002515HG	Cable Tray 300 x 25 x 1.5 mm HDG
EMCTDTM4502515HG	Cable Tray 450 x 25 x 1.5 mm HDG
EMCTDTM4502520HG	Cable Tray 450 x 25 x 2.0 mm HDG
EMCTDTM6002515HG	Cable Tray 600 x 25 x 1.5 mm HDG
EMCTDTM6002520HG	Cable Tray 600 x 25 x 2.0 mm HDG
EMCTDTM7502520HG	Cable Tray 750 x 25 x 2.0 mm HDG
EMCTDTM9002520HG	Cable Tray 900 x 25 x 2.0 mm HDG



Product Selection Guide	Other Finish Options
Replace HG by PG	Pre Galvanised (PG)
Replace HG by HGGR	Epoxy Coated Green
Replace HG by HGWH	Epoxy Coated White

90° Bend - Hot Dip Galvanised (HDG)

Item Code	Description
EMFCT90B052510HG	C Tray 90° Bend 50 x 25 x 1.0mm HG
EMFCT90B102512HG	C Tray 90° Bend 100 x 25 x 1.2mm HG
EMFCT90B152512HG	C Tray 90° Bend 150 x 25 x 1.2mm HG
EMFCT90B202515HG	C Tray 90° Bend 200 x 25 x 1.5mm HG
EMFCT90B302515HG	C Tray 90° Bend 300 x 25 x 1.5mm HG
EMFCT90B452520HG	C Tray 90° Bend 450 x 25 x 2.0mm HG
EMFCT90B602520HG	C Tray 90° Bend 600 x 25 x 2.0mm HG
EMFCT90B752520HG	C Tray 90° Bend 750 x 25 x 2.0mm HG
EMFCT90B902520HG	C Tray 90° Bend 900 x 25 x 2.0mm HG

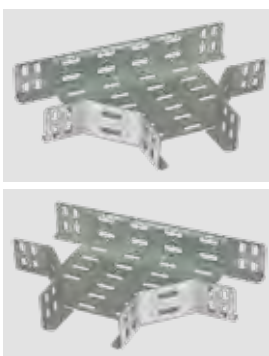


Product Selection Guide	Other Finish Options
Replace HG by PG	Pre Galvanised (PG)
Replace HG by HGGR	Epoxy Coated Green
Replace HG by HGWH	Epoxy Coated White

45° Bend options available upon request / re-confirmation.

Equal Tee - Hot Dip Galvanised (HDG)

Item Code	Description
EMCTET0502510HG	C Tray Equal Tee 50 x 25 x 1.0mm HG
EMCTET1002512HG	C Tray Equal Tee 100 x 25 x 1.2mm HG
EMCTET1502512HG	C Tray Equal Tee 150 x 25 x 1.2mm HG
EMCTET2002515HG	C Tray Equal Tee 200 x 25 x 1.5mm HG
EMCTET3002515HG	C Tray Equal Tee 300 x 25 x 1.5mm HG
EMCTET4502520HG	C Tray Equal Tee 450 x 25 x 2.0mm HG
EMCTET6002520HG	C Tray Equal Tee 600 x 25 x 2.0mm HG
EMCTET7502520HG	C Tray Equal Tee 750 x 25 x 2.0mm HG
EMCTET9002520HG	C Tray Equal Tee 900 x 25 x 2.0mm HG



Product Selection Guide	Other Finish Options
Replace HG by PG	Pre Galvanised (PG)
Replace HG by HGGR	Epoxy Coated Green
Replace HG by HGWH	Epoxy Coated White

Unequal Tee options available upon request / re-confirmation.

DECODUCT METAL CABLE TRAY ACCESSORIES - MEDIUM DUTY

Equal Crossover - Hot Dip Galvanised (HDG)

Item Code	Description		Product Selection Guide	Other Finish Options
EMCTECR0502510HG	C Tray EQ Crossover 50 x 25 x 1.0mm HG		Replace HG by PG	Pre Galvanised (PG)
EMCTECR1002512HG	C Tray EQ Crossover 100 x 25 x 1.2mm HG		Replace HG by HGGR	Epoxy Coated Green
EMCTECR1502512HG	C Tray EQ Crossover 150 x 25 x 1.2mm HG		Replace HG by HGWH	Epoxy Coated White
EMCTECR2002515HG	C Tray EQ Crossover 200 x 25 x 1.5mm HG			
EMCTECR3002515HG	C Tray EQ Crossover 300 x 25 x 1.5mm HG			
EMCTECR4502520HG	C Tray EQ Crossover 450 x 25 x 2.0mm HG			
EMCTECR6002520HG	C Tray EQ Crossover 600 x 25 x 2.0mm HG			
EMCTECR7502520HG	C Tray EQ Crossover 750 x 25 x 2.0mm HG			
EMCTECR9002520HG	C Tray EQ Crossover 900 x 25 x 2.0mm HG			

Unequal Crossover options available upon request / re-confirmation.

90° Outside Riser - Hot Dip Galvanised (HDG)

Item Code	Description		Product Selection Guide	Other Finish Options
EMFOR900502510HG	C Tray 90° OS Riser 50 x 25 x 1.0mm HG		Replace HG by PG	Pre Galvanised (PG)
EMFOR901002512HG	C Tray 90° OS Riser 100 x 25 x 1.2mm HG		Replace HG by HGGR	Epoxy Coated Green
EMFOR901502512HG	C Tray 90° OS Riser 150 x 25 x 1.2mm HG		Replace HG by HGWH	Epoxy Coated White
EMFOR902002515HG	C Tray 90° OS Riser 200 x 25 x 1.5mm HG			
EMFOR903002515HG	C Tray 90° OS Riser 300 x 25 x 1.5mm HG			
EMFOR904502520HG	C Tray 90° OS Riser 450 x 25 x 2.0mm HG			
EMFOR906002520HG	C Tray 90° OS Riser 600 x 25 x 2.0mm HG			
EMFOR907502520HG	C Tray 90° OS Riser 750 x 25 x 2.0mm HG			
EMFOR909002520HG	C Tray 90° OS Riser 900 x 25 x 2.0mm HG			

45° Riser options available upon request / re-confirmation.

90° Inside Riser - Hot Dip Galvanised (HDG)

Item Code	Description		Product Selection Guide	Other Finish Options
EMFIR900502510HG	C Tray 90° IS Riser 50 x 25 x 1.0mm HG		Replace HG by PG	Pre Galvanised (PG)
EMFIR901002512HG	C Tray 90° IS Riser 100 x 25 x 1.2mm HG		Replace HG by HGGR	Epoxy Coated Green
EMFIR901502512HG	C Tray 90° IS Riser 150 x 25 x 1.2mm HG		Replace HG by HGWH	Epoxy Coated White
EMFIR902002515HG	C Tray 90° IS Riser 200 x 25 x 1.5mm HG			
EMFIR903002515HG	C Tray 90° IS Riser 300 x 25 x 1.5mm HG			
EMFIR904502520HG	C Tray 90° IS Riser 450 x 25 x 2.0mm HG			
EMFIR906002520HG	C Tray 90° IS Riser 600 x 25 x 2.0mm HG			
EMFIR907502520HG	C Tray 90° IS Riser 750 x 25 x 2.0mm HG			
EMFIR909002520HG	C Tray 90° IS Riser 900 x 25 x 2.0mm HG			

45° Riser options available upon request / re-confirmation.

Other Sizes, Thickness & colours available upon request / re-confirmation.

Accessories available with cover (optional).

Product codes may vary slightly.

DECODUCT METAL CABLE TRAY ACCESSORIES - MEDIUM DUTY

Straight Reducer - Hot Dip Galvanised (HDG)

Item Code	Description		Product Selection Guide	Other Finish Options
EMCR1501002512HG	C Tray Straight Reducer 150 x 100 x 25 x 1.2mm HG		Replace HG by PG	Pre Galvanised (PG)
EMCR3002002515HG	C Tray Straight Reducer 300 x 200 x 25 x 1.5mm HG		Replace HG by HGGR	Epoxy Coated Green
EMCR6004502520HG	C Tray Straight Reducer 600 x 450 x 25 x 2.0mm HG		Replace HG by HGWH	Epoxy Coated White
EMCR7504502520HG	C Tray Straight Reducer 750 x 450 x 25 x 2.0mm HG			
EMCR7506002520HG	C Tray Straight Reducer 750 x 600 x 25 x 2.0mm HG			
EMCR9007502520HG	C Tray Straight Reducer 900 x 750 x 25 x 2.0mm HG			
EMCR9006002520HG	C Tray Straight Reducer 900 x 600 x 25 x 2.0mm HG			

Left Hand & Right Hand reducer options available upon request / re-confirmation.

Coupler - Hot Dip Galvanised (HDG)



Item Code	Description		Product Selection Guide	Other Finish Options
EMCTCPL02510HG	C Tray Straight Coupler 25 x 1.0mm HG		Replace HG by PG	Pre Galvanised (PG)
EMCTCPL02512HG	C Tray Straight Coupler 25 x 1.2mm HG		Replace HG by HGGR	Epoxy Coated Green
EMCTCPL02515HG	C Tray Straight Coupler 25 x 1.5mm HG		Replace HG by HGWH	Epoxy Coated White
EMCTCPL02520HG	C Tray Straight Coupler 25 x 2.0mm HG			

Fish Plate - Hot Dip Galvanised (HDG)

Item Code	Description		Product Selection Guide	Other Finish Options
EMCTFPL0502510HG	C Tray Fish PLT 50 x 25 x 1.0mm HG		Replace HG by PG	Pre Galvanised (PG)
EMCTFPL1002512HG	C Tray Fish PLT 100 x 25 x 1.2mm HG		Replace HG by HGGR	Epoxy Coated Green
EMCTFPL1502512HG	C Tray Fish PLT 150 x 25 x 1.2mm HG		Replace HG by HGWH	Epoxy Coated White
EMCTFPL2002515HG	C Tray Fish PLT 200 x 25 x 1.5mm HG			
EMCTFPL3002515HG	C Tray Fish PLT 300 x 25 x 1.5mm HG			
EMCTFPL4502520HG	C Tray Fish PLT 450 x 25 x 2.0mm HG			
EMCTFPL6002520HG	C Tray Fish PLT 600 x 25 x 2.0mm HG			
EMCTFPL7502520HG	C Tray Fish PLT 750 x 25 x 2.0mm HG			
EMCTFPL9002520HG	C Tray Fish PLT 900 x 25 x 2.0mm HG			

DECODUCT METAL CABLE TRAY SYSTEM - LIGHT DUTY

Finish : Hot Dip Galvanised after fabrication, straight vertical flange, 20mm side height, Standard length 3 Metre

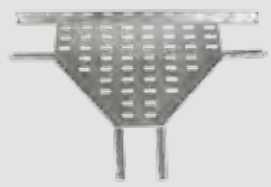
Item Code	Description		Product Selection Guide	Other Finish Options
EMCTDTL0502010HG	Cable Tray 50 x 20 x 1.0 mm HDG		Replace HG by PG	Pre Galvanised (PG)
EMCTDTL0502012HG	Cable Tray 50 x 20 x 1.2 mm HDG		Replace HG by HGGR	Epoxy Coated Green
EMCTDTL0502015HG	Cable Tray 50 x 20 x 1.5 mm HDG		Replace HG by HGWH	Epoxy Coated White
EMCTDTL0752010HG	Cable Tray 75 x 20 x 1.0 mm HDG			
EMCTDTL0752012HG	Cable Tray 75 x 20 x 1.2 mm HDG			
EMCTDTL0752015HG	Cable Tray 75 x 20 x 1.5 mm HDG			
EMCTDTL1002010HG	Cable Tray 100 x 20 x 1.0 mm HDG			
EMCTDTL1002012HG	Cable Tray 100 x 20 x 1.2 mm HDG			
EMCTDTL1002015HG	Cable Tray 100 x 20 x 1.5 mm HDG			
EMCTDTL1502010HG	Cable Tray 150 x 20 x 1.0 mm HDG			
EMCTDTL1502012HG	Cable Tray 150 x 20 x 1.2 mm HDG			
EMCTDTL1502015HG	Cable Tray 150 x 20 x 1.5 mm HDG			
EMCTDTL2002012HG	Cable Tray 200 x 20 x 1.2 mm HDG			
EMCTDTL2002015HG	Cable Tray 200 x 20 x 1.5 mm HDG			
EMCTDTL2252012HG	Cable Tray 225 x 20 x 1.2 mm HDG			
EMCTDTL2252015HG	Cable Tray 225 x 20 x 1.5 mm HDG			
EMCTDTL3002012HG	Cable Tray 300 x 20 x 1.2 mm HDG			
EMCTDTL3002015HG	Cable Tray 300 x 20 x 1.5 mm HDG			
EMCTDTL4502015HG	Cable Tray 450 x 20 x 1.5 mm HDG			
EMCTDTL4502020HG	Cable Tray 450 x 20 x 2.0 mm HDG			
EMCTDTL6002015HG	Cable Tray 600 x 20 x 1.5 mm HDG			
EMCTDTL6002020HG	Cable Tray 600 x 20 x 2.0 mm HDG			
EMCTDTL7502020HG	Cable Tray 750 x 20 x 2.0 mm HDG			
EMCTDTL9002020HG	Cable Tray 900 x 20 x 2.0 mm HDG			

90° Bend - Hot Dip Galvanised (HDG)

Item Code	Description		Product Selection Guide	Other Finish Options
EMFCT90B052010HG	C Tray 90° Bend 50 x 20 x 1.0mm HG		Replace HG by PG	Pre Galvanised (PG)
EMFCT90B102012HG	C Tray 90° Bend 100 x 20 x 1.2mm HG		Replace HG by HGGR	Epoxy Coated Green
EMFCT90B152012HG	C Tray 90° Bend 150 x 20 x 1.2mm HG		Replace HG by HGWH	Epoxy Coated White
EMFCT90B202015HG	C Tray 90° Bend 200 x 20 x 1.5mm HG			
EMFCT90B302015HG	C Tray 90° Bend 300 x 20 x 1.5mm HG			
EMFCT90B452020HG	C Tray 90° Bend 450 x 20 x 2.0mm HG			
EMFCT90B602020HG	C Tray 90° Bend 600 x 20 x 2.0mm HG			
EMFCT90B752020HG	C Tray 90° Bend 750 x 20 x 2.0mm HG			
EMFCT90B902020HG	C Tray 90° Bend 900 x 20 x 2.0mm HG			

45° Bend options available upon request / re-confirmation.

Equal Tee - Hot Dip Galvanised (HDG)

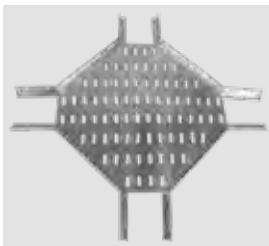
Item Code	Description		Product Selection Guide	Other Finish Options
EMCTET0502010HG	C Tray Equal Tee 50 x 20 x 1.0mm HG		Replace HG by PG	Pre Galvanised (PG)
EMCTET1002012HG	C Tray Equal Tee 100 x 20 x 1.2mm HG		Replace HG by HGGR	Epoxy Coated Green
EMCTET1502012HG	C Tray Equal Tee 150 x 20 x 1.2mm HG		Replace HG by HGWH	Epoxy Coated White
EMCTET2002015HG	C Tray Equal Tee 200 x 20 x 1.5mm HG			
EMCTET3002015HG	C Tray Equal Tee 300 x 20 x 1.5mm HG			
EMCTET4502020HG	C Tray Equal Tee 450 x 20 x 2.0mm HG			
EMCTET6002020HG	C Tray Equal Tee 600 x 20 x 2.0mm HG			
EMCTET7502020HG	C Tray Equal Tee 750 x 20 x 2.0mm HG			
EMCTET9002020HG	C Tray Equal Tee 900 x 20 x 2.0mm HG			

Unequal Tee options available upon request / re-confirmation.

DECODUCT METAL CABLE TRAY ACCESSORIES - LIGHT DUTY

Equal Crossover - Hot Dip Galvanised (HDG)

Item Code	Description
EMCTECR0502010HG	C Tray EQ Crossover 50 x 20 x 1.0mm HG
EMCTECR1002012HG	C Tray EQ Crossover 100 x 20 x 1.2mm HG
EMCTECR1502012HG	C Tray EQ Crossover 150 x 20 x 1.2mm HG
EMCTECR2002015HG	C Tray EQ Crossover 200 x 20 x 1.5mm HG
EMCTECR3002015HG	C Tray EQ Crossover 300 x 20 x 1.5mm HG
EMCTECR4502020HG	C Tray EQ Crossover 450 x 20 x 2.0mm HG
EMCTECR6002020HG	C Tray EQ Crossover 600 x 20 x 2.0mm HG
EMCTECR7502020HG	C Tray EQ Crossover 750 x 20 x 2.0mm HG
EMCTECR9002020HG	C Tray EQ Crossover 900 x 20 x 2.0mm HG



Product Selection Guide	Other Finish Options
Replace HG by PG	Pre Galvanised (PG)
Replace HG by HGGR	Epoxy Coated Green
Replace HG by HGWH	Epoxy Coated White

Unequal Crossover options available upon request / re-confirmation.

90° Outside Riser - Hot Dip Galvanised (HDG)

Item Code	Description
EMFOR900502010HG	C Tray 90° OS Riser 50 x 20 x 1.0mm HG
EMFOR901002012HG	C Tray 90° OS Riser 100 x 20 x 1.2mm HG
EMFOR901502012HG	C Tray 90° OS Riser 150 x 20 x 1.2mm HG
EMFOR902002015HG	C Tray 90° OS Riser 200 x 20 x 1.5mm HG
EMFOR903002015HG	C Tray 90° OS Riser 300 x 20 x 1.5mm HG
EMFOR904502020HG	C Tray 90° OS Riser 450 x 20 x 2.0mm HG
EMFOR906002020HG	C Tray 90° OS Riser 600 x 20 x 2.0mm HG
EMFOR907502020HG	C Tray 90° OS Riser 750 x 20 x 2.0mm HG
EMFOR909002020HG	C Tray 90° OS Riser 900 x 20 x 2.0mm HG

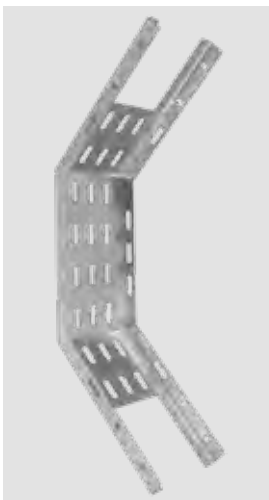


Product Selection Guide	Other Finish Options
Replace HG by PG	Pre Galvanised (PG)
Replace HG by HGGR	Epoxy Coated Green
Replace HG by HGWH	Epoxy Coated White

45° Riser options available upon request / re-confirmation.

90° Inside Riser - Hot Dip Galvanised (HDG)

Item Code	Description
EMFIR900502010HG	C Tray 90° IS Riser 50 x 20 x 1.0mm HG
EMFIR901002012HG	C Tray 90° IS Riser 100 x 20 x 1.2mm HG
EMFIR901502012HG	C Tray 90° IS Riser 150 x 20 x 1.2mm HG
EMFIR902002015HG	C Tray 90° IS Riser 200 x 20 x 1.5mm HG
EMFIR903002015HG	C Tray 90° IS Riser 300 x 20 x 1.5mm HG
EMFIR904502020HG	C Tray 90° IS Riser 450 x 20 x 2.0mm HG
EMFIR906002020HG	C Tray 90° IS Riser 600 x 20 x 2.0mm HG
EMFIR907502020HG	C Tray 90° IS Riser 750 x 20 x 2.0mm HG
EMFIR909002020HG	C Tray 90° IS Riser 900 x 20 x 2.0mm HG



Product Selection Guide	Other Finish Options
Replace HG by PG	Pre Galvanised (PG)
Replace HG by HGGR	Epoxy Coated Green
Replace HG by HGWH	Epoxy Coated White

45° Riser options available upon request / re-confirmation.

DECODUCT METAL CABLE TRAY ACCESSORIES - LIGHT DUTY

Straight Reducer - Hot Dip Galvanised (HDG)

Item Code	Description
EMCR1501002012HG	C Tray Straight Reducer 150 x 100 x 20 x 1.2mm HG
EMCR3002002015HG	C Tray Straight Reducer 300 x 200 x 20 x 1.5mm HG
EMCR6004502020HG	C Tray Straight Reducer 600 x 450 x 20 x 2.0mm HG
EMCR7504502020HG	C Tray Straight Reducer 750 x 450 x 20 x 2.0mm HG
EMCR7506002020HG	C Tray Straight Reducer 750 x 600 x 20 x 2.0mm HG
EMCR9007502020HG	C Tray Straight Reducer 900 x 750 x 20 x 2.0mm HG
EMCR9006002020HG	C Tray Straight Reducer 900 x 600 x 20 x 2.0mm HG



Product Selection Guide	Other Finish Options
Replace HG by PG	Pre Galvanised (PG)
Replace HG by HGGR	Epoxy Coated Green
Replace HG by HGWH	Epoxy Coated White

Left Hand & Right Hand reducer options available upon request / re-confirmation.

Coupler - Hot Dip Galvanised (HDG)

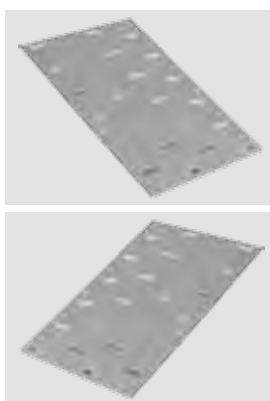
Item Code	Description
EMCTCPL02010HG	C Tray Straight Coupler 20 x 1.0mm HG
EMCTCPL02012HG	C Tray Straight Coupler 20 x 1.2mm HG
EMCTCPL02015HG	C Tray Straight Coupler 20 x 1.5mm HG
EMCTCPL02020HG	C Tray Straight Coupler 20 x 2.0mm HG



Product Selection Guide	Other Finish Options
Replace HG by PG	Pre Galvanised (PG)
Replace HG by HGGR	Epoxy Coated Green
Replace HG by HGWH	Epoxy Coated White

Fish Plate - Hot Dip Galvanised (HDG)

Item Code	Description
EMCTFPL0502010HG	C Tray Fish PLT 50 x 20 x 1.0mm HG
EMCTFPL1002012HG	C Tray Fish PLT 100 x 20 x 1.2mm HG
EMCTFPL1502012HG	C Tray Fish PLT 150 x 20 x 1.2mm HG
EMCTFPL2002015HG	C Tray Fish PLT 200 x 20 x 1.5mm HG
EMCTFPL3002015HG	C Tray Fish PLT 300 x 20 x 1.5mm HG
EMCTFPL4502020HG	C Tray Fish PLT 450 x 20 x 2.0mm HG
EMCTFPL6002020HG	C Tray Fish PLT 600 x 20 x 2.0mm HG
EMCTFPL7502020HG	C Tray Fish PLT 750 x 20 x 2.0mm HG
EMCTFPL9002020HG	C Tray Fish PLT 900 x 20 x 2.0mm HG



Product Selection Guide	Other Finish Options
Replace HG by PG	Pre Galvanised (PG)
Replace HG by HGGR	Epoxy Coated Green
Replace HG by HGWH	Epoxy Coated White

DECODUCT METAL CABLE TRAY SYSTEM

DECODUCT Cable Tray consists of a ventilated bottom, contained within longitudinal side members.

- Typically used by all industries to carry power, instrumentation, data communications, computer, telephone, control and fiber optic cables.

FINISHES

Pre-Galvanised

DECODUCT Cable Trays can be supplied from galvanised steel to BSEN 10143. Average coating thickness is 275 gms/m² and gives excellent corrosion protection with a smooth even coating finish usually suited for applications under normal atmospheric conditions or near dry indoor conditions.

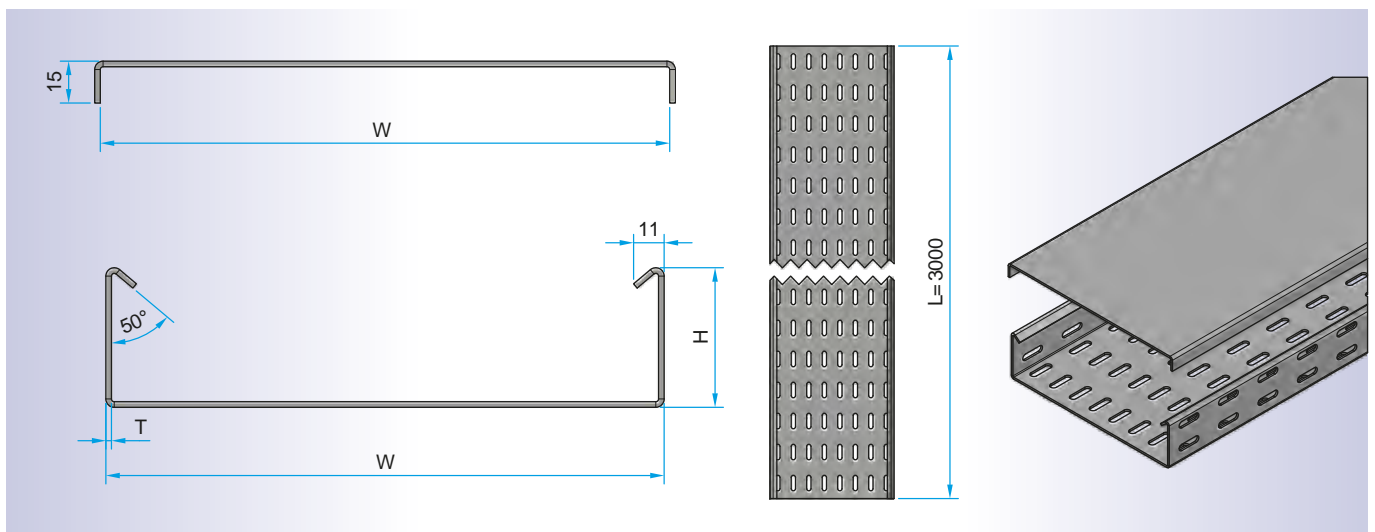
Hot Dip Galvanised

DECODUCT Cable Trays can be supplied by Hot Dip Galvanising to BS EN ISO 1461 after shearing and punching operations are carried out on the substrate steel sheet to BS 1449 Part 1. These Cable Trays are more suitable for harsher and more exposed exterior conditions, since the average coating thickness ranges from 335 - 460 gms/m² depending on the base material thickness which ranges from 1.0 mm to 2.0 mm.

Epoxy Coated

DECODUCT Cable Trays can be supplied epoxy powder coated through an electrostatic system which provides a uniform coating of epoxy. These Cable Trays are suitable for conditions of high humidity, acids, alkali and organic solvents. The coating will not support combustion or emit toxic fumes. Suitable colour is Grey, however, other colours can be provided on request.

TECHNICAL DATA CABLE TRAY



• Applicable Standards	- BSEN 10143, 1461 & BS 1449
• Product Drawing (For Reference Only)	
• Average Coating Thickness	- 45 - 50 Microns
• Nominal Product Sizes	- 200 x 50 x 1.5 mm
(For Reference Only)	- 300 x 50 x 1.5 mm
	- 400 x 50 x 1.5 mm
	- 600 x 50 x 2.0 mm
	- 900 x 50 x 2.0 mm



STANDARD SPECIFICATION

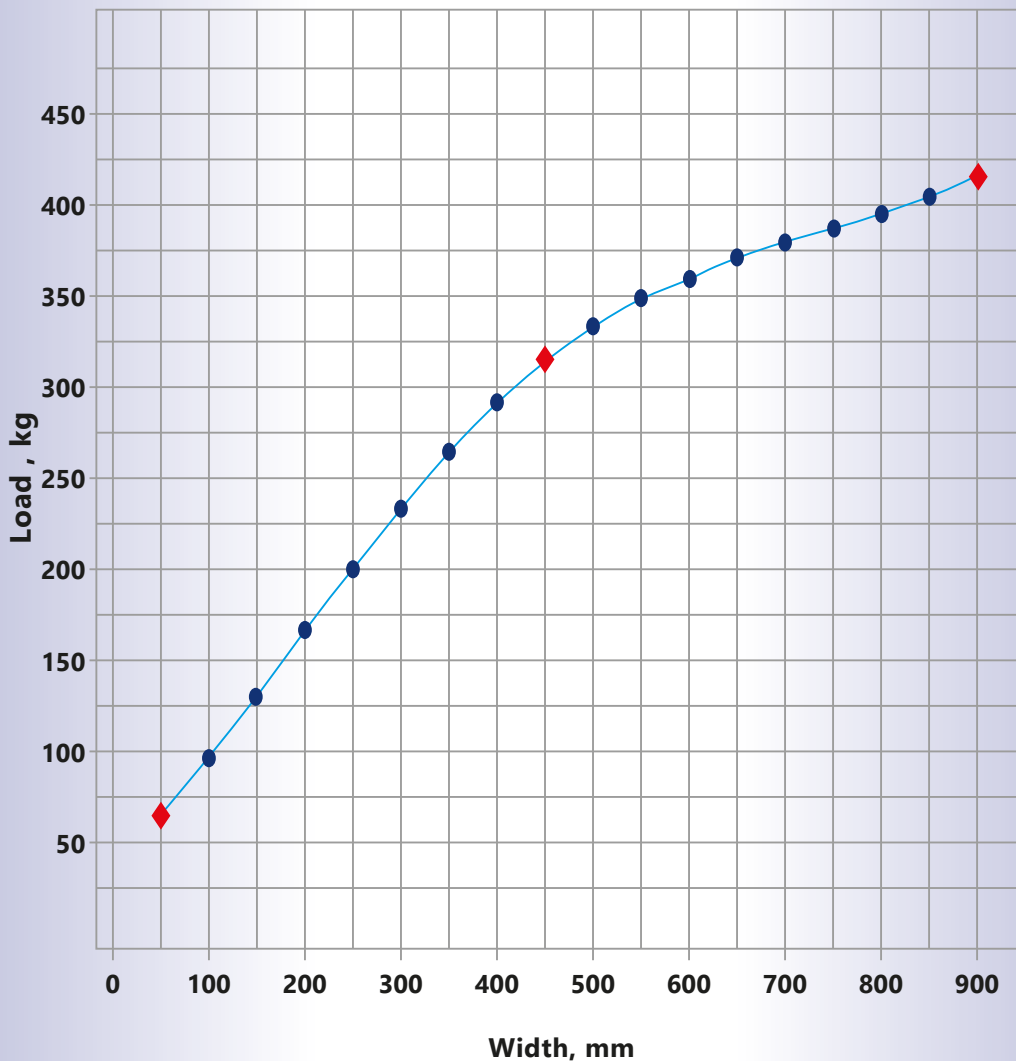
NEMA VE1, EN 61537, EN 50085-1 and EN 50085-2-1

Mechanical Properties Summary of Tests

LOAD TEST - CABLE TRAY

Thickness		Nominal	Nominal	Sample	Sample	Maximum Load				Maximum Deflection			
Nominal	Actual					1	2	3	Average	1	2	3	Average
mm	mm	mm	mm	mm	mm	kg	kg	kg	kg	mm	mm	mm	mm
2.0	1.8	900	25	1800	1500	415.64	415.46	415.47	415.52	14.03	13.12	12.25	13.13
2.0	2.0	450	25	1800	1500	311.39	311.14	325	315.84	15.00	15.00	15.00	15.00
2.0	1.9	50	25	1800	1500	75	55	-	65.00	15.00	15.00	-	15.00
2.0	1.9	900	50	1800	1500	1037.28	1037.37	1037.37	1037.17	5.73	4.94	4.43	5.03

2 mm thick x 25 mm depth Cable Tray



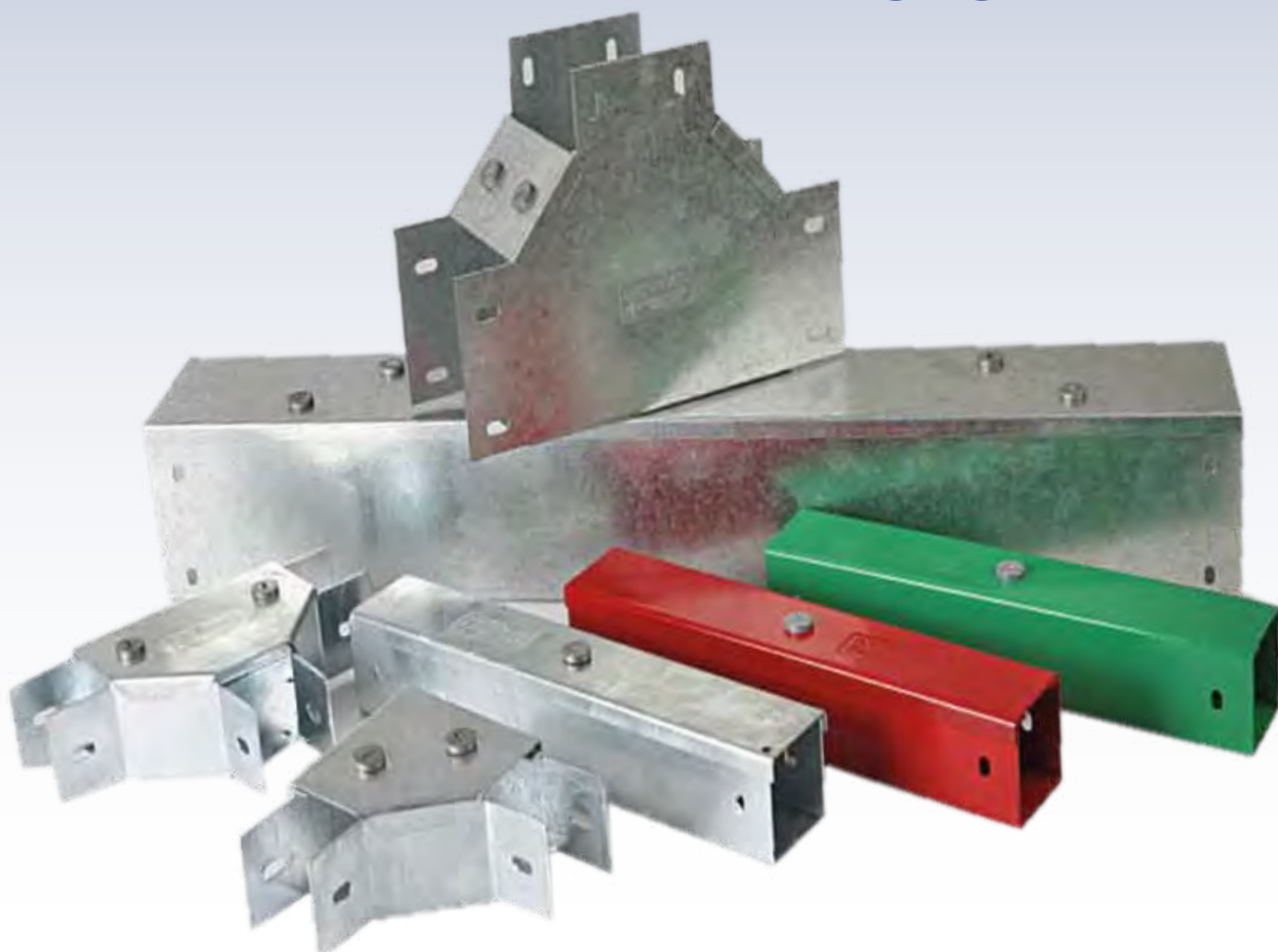
Maximum Deflection		
Width	Load	Average
mm	kg	kg
50	65	43
100	97	65
150	130	87
200	167	111
250	200	133
300	234	156
350	265	177
400	292	195
450	316	211
500	334	223
550	350	233
600	360	240
650	372	248
700	380	253
750	388	259
800	396	264
850	405	270
900	416	277

**MANUFACTURED IN ACCORDANCE
WITH BRITISH STANDARDS**

**Trunking and Accessories: BS EN 10346
BS EN 10143
BS EN 50085
BS EN 50085-2-1**



DECODUCT METAL TRUNKING SYSTEM



DECODUCT METAL CABLE TRUNKING SYSTEM

Finish : Pre-Galvanised PG, Return Edge, with Cover & Coupler Standard length 3 Metre

Item Code	Description
EMTRD05005009CPG	M Trunking 50 x 50 x 0.9mm W.CVR PG
EMTRD05005010CPG	M Trunking 50 x 50 x 1.0mm W.CVR PG
EMTRD07505009CPG	M Trunking 75 x 50 x 0.9mm W.CVR PG
EMTRD07505010CPG	M Trunking 75 x 50 x 1.0mm W.CVR PG
EMTRD07507512CPG	M Trunking 75 x 75 x 1.2mm W.CVR PG
EMTRD10005012CPG	M Trunking 100 x 50 x 1.2mm W.CVR PG
EMTRD10007512CPG	M Trunking 100 x 75 x 1.2mm W.CVR PG
EMTRD10010012CPG	M Trunking 100 x 100 x 1.2mm W.CVR PG
EMTRD15005012CPG	M Trunking 150 x 50 x 1.2mm W.CVR PG
EMTRD15007512CPG	M Trunking 150 x 75 x 1.2mm W.CVR PG
EMTRD15010012CPG	M Trunking 150 x 100 x 1.2mm W.CVR PG
EMTRD22505012CPG	M Trunking 225 x 50 x 1.2mm W.CVR PG
EMTRD20005012CPG	M Trunking 200 x 50 x 1.2mm W.CVR PG
EMTRD20007512CPG	M Trunking 200 x 75 x 1.2mm W.CVR PG
EMTRD20010015CPG	M Trunking 200 x 100 x 1.5mm W.CVR PG
EMTRD20010020CPG	M Trunking 200 x 100 x 2.0mm W.CVR PG
EMTRD15015015CPG	M Trunking 150 x 150 x 1.5mm W.CVR PG
EMTRD15015020CPG	M Trunking 150 x 150 x 2.0mm W.CVR PG
EMTRD20015015CPG	M Trunking 200 x 150 x 1.5mm W.CVR PG
EMTRD20015020CPG	M Trunking 200 x 150 x 2.0mm W.CVR PG
EMTRD20020015CPG	M Trunking 200 x 200 x 1.5mm W.CVR PG
EMTRD20020020CPG	M Trunking 200 x 200 x 2.0mm W.CVR PG
EMTRD22507515CPG	M Trunking 225 x 75 x 1.5mm W.CVR PG
EMTRD22507520CPG	M Trunking 225 x 75 x 2.0mm W.CVR PG
EMTRD22510015CPG	M Trunking 225 x 100 x 1.5mm W.CVR PG
EMTRD22510020CPG	M Trunking 225 x 100 x 2.0mm W.CVR PG
EMTRD22515015CPG	M Trunking 225 x 150 x 1.5mm W.CVR PG
EMTRD22515020CPG	M Trunking 225 x 150 x 2.0mm W.CVR PG
EMTRD22520015CPG	M Trunking 225 x 200 x 1.5mm W.CVR PG
EMTRD22520020CPG	M Trunking 225 x 200 x 2.0mm W.CVR PG
EMTRD22522515CPG	M Trunking 225 x 225 x 1.5mm W.CVR PG
EMTRD22522520CPG	M Trunking 225 x 225 x 2.0mm W.CVR PG
EMTRD30005015CPG	M Trunking 300 x 50 x 1.5mm W.CVR PG
EMTRD30005020CPG	M Trunking 300 x 50 x 2.0mm W.CVR PG
EMTRD30007515CPG	M Trunking 300 x 75 x 1.5mm W.CVR PG
EMTRD30007520CPG	M Trunking 300 x 75 x 2.0mm W.CVR PG
EMTRD30010015CPG	M Trunking 300 x 100 x 1.5mm W.CVR PG
EMTRD30010020CPG	M Trunking 300 x 100 x 2.0mm W.CVR PG
EMTRD30015015CPG	M Trunking 300 x 150 x 1.5mm W.CVR PG
EMTRD30015020CPG	M Trunking 300 x 150 x 2.0mm W.CVR PG
EMTRD30020015CPG	M Trunking 300 x 200 x 1.5mm W.CVR PG
EMTRD30020020CPG	M Trunking 300 x 200 x 2.0mm W.CVR PG
EMTRD30022515CPG	M Trunking 300 x 225 x 1.5mm W.CVR PG
EMTRD30022520CPG	M Trunking 300 x 225 x 2.0mm W.CVR PG
EMTRD30030020CPG	M Trunking 300 x 300 x 2.0mm W.CVR PG



Product Selection Guide	Other Finish Options
Replace PG by HG	Hot Dip Galvanised (HDG)
Replace PG by HGGR	Epoxy Coated Green
Replace PG by HGWH	Epoxy Coated White



Other Sizes, Thickness & colours available upon request / re-confirmation.

2 & 3 Compartment Options available upon request / re-confirmation.

Product codes may vary slightly.

DECODUCT METAL CABLE TRUNKING ACCESSORIES

90° Bend Top Lid - Pre Galvanised (PG)

Item Code	Description
EMT90BTL050510PG	M Trunking 90° Bend Top Lid 50 x 50 x 1.0 mm PG
EMT90BTL750510PG	M Trunking 90° Bend Top Lid 75 x 50 x 1.0 mm PG
EMT90BTL757512PG	M Trunking 90° Bend Top Lid 75 x 75 x 1.2 mm PG
EMT90BTL100512PG	M Trunking 90° Bend Top Lid 100 x 50 x 1.2mm PG
EMT90BTL107512PG	M Trunking 90° Bend Top Lid 100 x 75 x 1.2mm PG
EMT90BTL101012PG	M Trunking 90° Bend Top Lid 100 x 100 x 1.2mm PG
EMT90BTL150512PG	M Trunking 90° Bend Top Lid 150 x 50 x 1.2mm PG
EMT90BTL157512PG	M Trunking 90° Bend Top Lid 150 x 75 x 1.2mm PG
EMT90BTL151012PG	M Trunking 90° Bend Top Lid 150 x 100 x 1.2mm PG
EMT90BTL151515PG	M Trunking 90° Bend Top Lid 150 x 150 x 1.5mm PG
EMT90BTL200512PG	M Trunking 90° Bend Top Lid 200 x 50 x 1.2mm PG
EMT90BTL207512PG	M Trunking 90° Bend Top Lid 200 x 75 x 1.2mm PG
EMT90BTL201015PG	M Trunking 90° Bend Top Lid 200 x 100 x 1.5mm PG
EMT90BTL201515PG	M Trunking 90° Bend Top Lid 200 x 150 x 1.5mm PG
EMT90BTL202015PG	M Trunking 90° Bend Top Lid 200 x 200 x 1.5mm PG
EMT90BTL300515PG	M Trunking 90° Bend Top Lid 300 x 50 x 1.5mm PG
EMT90BTL307515PG	M Trunking 90° Bend Top Lid 300 x 75 x 1.5mm PG
EMT90BTL301015PG	M Trunking 90° Bend Top Lid 300 x 100 x 1.5mm PG
EMT90BTL301515PG	M Trunking 90° Bend Top Lid 300 x 150 x 1.5mm PG
EMT90BTL302015PG	M Trunking 90° Bend Top Lid 300 x 200 x 1.5mm PG
EMT90BTL303020PG	M Trunking 90° Bend Top Lid 300 x 300 x 2.0mm PG



Product Selection Guide	Other Finish Options
Replace PG by HG	Hot Dip Galvanised (HDG)
Replace PG by HGGR	Epoxy Coated Green
Replace PG by HGWH	Epoxy Coated White

45° Bend options available upon request / re-confirmation.



90° Bend Outside Lid - Pre Galvanised (PG)

Item Code	Description
EMT90BOL050510PG	M Trunking 90° Bend Outside Lid 50 x 50 x 1.0 mm PG
EMT90BOL750510PG	M Trunking 90° Bend Outside Lid 75 x 50 x 1.0 mm PG
EMT90BOL757512PG	M Trunking 90° Bend Outside Lid 75 x 75 x 1.2 mm PG
EMT90BOL100512PG	M Trunking 90° Bend Outside Lid 100 x 50 x 1.2mm PG
EMT90BOL107512PG	M Trunking 90° Bend Outside Lid 100 x 75 x 1.2mm PG
EMT90BOL101012PG	M Trunking 90° Bend Outside Lid 100 x 100 x 1.2mm PG
EMT90BOL150512PG	M Trunking 90° Bend Outside Lid 150 x 50 x 1.2mm PG
EMT90BOL157512PG	M Trunking 90° Bend Outside Lid 150 x 75 x 1.2mm PG
EMT90BOL151012PG	M Trunking 90° Bend Outside Lid 150 x 100 x 1.2mm PG
EMT90BOL151515PG	M Trunking 90° Bend Outside Lid 150 x 150 x 1.5mm PG
EMT90BOL200512PG	M Trunking 90° Bend Outside Lid 200 x 50 x 1.2mm PG
EMT90BOL207512PG	M Trunking 90° Bend Outside Lid 200 x 75 x 1.2mm PG
EMT90BOL201015PG	M Trunking 90° Bend Outside Lid 200 x 100 x 1.5mm PG
EMT90BOL201515PG	M Trunking 90° Bend Outside Lid 200 x 150 x 1.5mm PG
EMT90BOL202015PG	M Trunking 90° Bend Outside Lid 200 x 200 x 1.5mm PG
EMT90BOL300515PG	M Trunking 90° Bend Outside Lid 300 x 50 x 1.5mm PG
EMT90BOL307515PG	M Trunking 90° Bend Outside Lid 300 x 75 x 1.5mm PG
EMT90BOL301015PG	M Trunking 90° Bend Outside Lid 300 x 100 x 1.5mm PG
EMT90BOL301515PG	M Trunking 90° Bend Outside Lid 300 x 150 x 1.5mm PG
EMT90BOL302015PG	M Trunking 90° Bend Outside Lid 300 x 200 x 1.5mm PG
EMT90BOL303020PG	M Trunking 90° Bend Outside Lid 300 x 300 x 2.0mm PG



Product Selection Guide	Other Finish Options
Replace PG by HG	Hot Dip Galvanised (HDG)
Replace PG by HGGR	Epoxy Coated Green
Replace PG by HGWH	Epoxy Coated White

45° Bend options available upon request / re-confirmation.



DECODUCT METAL CABLE TRUNKING ACCESSORIES

90° Bend Inside Lid - Pre Galvanised (PG)

Item Code	Description
EMT90BIL050510PG	M Trunking 90° Bend Inside Lid 50 x 50 x 1.0 mm PG
EMT90BIL750510PG	M Trunking 90° Bend Inside Lid 75 x 50 x 1.0 mm PG
EMT90BIL757512PG	M Trunking 90° Bend Inside Lid 75 x 75 x 1.2 mm PG
EMT90BIL100512PG	M Trunking 90° Bend Inside Lid 100 x 50 x 1.2mm PG
EMT90BIL107512PG	M Trunking 90° Bend Inside Lid 100 x 75 x 1.2mm PG
EMT90BIL101012PG	M Trunking 90° Bend Inside Lid 100 x 100 x 1.2mm PG
EMT90BIL150512PG	M Trunking 90° Bend Inside Lid 150 x 50 x 1.2mm PG
EMT90BIL157512PG	M Trunking 90° Bend Inside Lid 150 x 75 x 1.2mm PG
EMT90BIL151012PG	M Trunking 90° Bend Inside Lid 150 x 100 x 1.2mm PG
EMT90BIL151515PG	M Trunking 90° Bend Inside Lid 150 x 150 x 1.5mm PG
EMT90BIL200512PG	M Trunking 90° Bend Inside Lid 200 x 50 x 1.2mm PG
EMT90BIL207512PG	M Trunking 90° Bend Inside Lid 200 x 75 x 1.2mm PG
EMT90BIL201015PG	M Trunking 90° Bend Inside Lid 200 x 100 x 1.5mm PG
EMT90BIL201515PG	M Trunking 90° Bend Inside Lid 200 x 150 x 1.5mm PG
EMT90BIL202015PG	M Trunking 90° Bend Inside Lid 200 x 200 x 1.5mm PG
EMT90BIL300515PG	M Trunking 90° Bend Inside Lid 300 x 50 x 1.5mm PG
EMT90BIL307515PG	M Trunking 90° Bend Inside Lid 300 x 75 x 1.5mm PG
EMT90BIL301015PG	M Trunking 90° Bend Inside Lid 300 x 100 x 1.5mm PG
EMT90BIL301515PG	M Trunking 90° Bend Inside Lid 300 x 150 x 1.5mm PG
EMT90BIL302015PG	M Trunking 90° Bend Inside Lid 300 x 200 x 1.5mm PG
EMT90BIL303020PG	M Trunking 90° Bend Inside Lid 300 x 300 x 2.0mm PG



Product Selection Guide	Other Finish Options
Replace PG by HG	Hot Dip Galvanised (HDG)
Replace PG by HGGR	Epoxy Coated Green
Replace PG by HGWH	Epoxy Coated White

45° Bend options available upon request / re-confirmation.



Equal Tee Top Lid - Pre Galvanised (PG)

Item Code	Description
EMTETTL0500510PG	M Trunking Eq Tee Top Lid 50 x 50 x 1.0 mm PG
EMTETTL0755010PG	M Trunking Eq Tee Top Lid 75 x 50 x 1.0 mm PG
EMTETTL0757512PG	M Trunking Eq Tee Top Lid 75 x 75 x 1.2 mm PG
EMTETTL1000512PG	M Trunking Eq Tee Top Lid 100 x 50 x 1.2mm PG
EMTETTL1007512PG	M Trunking Eq Tee Top Lid 100 x 75 x 1.2mm PG
EMTETTL1001012PG	M Trunking Eq Tee Top Lid 100 x 100 x 1.2mm PG
EMTETTL1500512PG	M Trunking Eq Tee Top Lid 150 x 50 x 1.2mm PG
EMTETTL1007512PG	M Trunking Eq Tee Top Lid 150 x 75 x 1.2mm PG
EMTETTL1501012PG	M Trunking Eq Tee Top Lid 150 x 100 x 1.2mm PG
EMTETTL1501515PG	M Trunking Eq Tee Top Lid 150 x 150 x 1.5mm PG
EMTETTL2000512PG	M Trunking Eq Tee Top Lid 200 x 50 x 1.2mm PG
EMTETTL2007512PG	M Trunking Eq Tee Top Lid 200 x 75 x 1.2mm PG
EMTETTL2001015PG	M Trunking Eq Tee Top Lid 200 x 100 x 1.5mm PG
EMTETTL2001515PG	M Trunking Eq Tee Top Lid 200 x 150 x 1.5mm PG
EMTETTL2002015PG	M Trunking Eq Tee Top Lid 200 x 200 x 1.5mm PG
EMTETTL3000515PG	M Trunking Eq Tee Top Lid 300 x 50 x 1.5mm PG
EMTETTL3007515PG	M Trunking Eq Tee Top Lid 300 x 75 x 1.5mm PG
EMTETTL3001015PG	M Trunking Eq Tee Top Lid 300 x 100 x 1.5mm PG
EMTETTL3001515PG	M Trunking Eq Tee Top Lid 300 x 150 x 1.5mm PG
EMTETTL3002015PG	M Trunking Eq Tee Top Lid 300 x 200 x 1.5mm PG
EMTETTL3003020PG	M Trunking Eq Tee Top Lid 300 x 300 x 2.0mm PG



Product Selection Guide	Other Finish Options
Replace PG by HG	Hot Dip Galvanised (HDG)
Replace PG by HGGR	Epoxy Coated Green
Replace PG by HGWH	Epoxy Coated White

Unequal Tee options available upon request / re-confirmation.



DECODUCT METAL CABLE TRUNKING ACCESSORIES

Equal Tee Outside Lid - Pre Galvanised (PG)

Item Code	Description
EMTTTOL0505010PG	M Trunking Tee Outside Lid 50 x 50 x 1.0 mm PG
EMTTTOL0755010PG	M Trunking Tee Outside Lid 75 x 50 x 1.0 mm PG
EMTTTOL0757512PG	M Trunking Tee Outside Lid 75 x 75 x 1.2 mm PG
EMTTTOL1005012PG	M Trunking Tee Outside Lid 100 x 50 x 1.2mm PG
EMTTTOL1007512PG	M Trunking Tee Outside Lid 100 x 75 x 1.2mm PG
EMTTTOL1001012PG	M Trunking Tee Outside Lid 100 x 100 x 1.2mm PG
EMTTTOL1505012PG	M Trunking Tee Outside Lid 150 x 50 x 1.2mm PG
EMTTTOL1507512PG	M Trunking Tee Outside Lid 150 x 75 x 1.2mm PG
EMTTTOL1501012PG	M Trunking Tee Outside Lid 150 x 100 x 1.2mm PG
EMTTTOL1501512PG	M Trunking Tee Outside Lid 150 x 150 x 1.5mm PG
EMTTTOL2005012PG	M Trunking Tee Outside Lid 200 x 50 x 1.2mm PG
EMTTTOL2007512PG	M Trunking Tee Outside Lid 200 x 75 x 1.2mm PG
EMTTTOL2001015PG	M Trunking Tee Outside Lid 200 x 100 x 1.5mm PG
EMTTTOL2001515PG	M Trunking Tee Outside Lid 200 x 150 x 1.5mm PG
EMTTTOL2002015PG	M Trunking Tee Outside Lid 200 x 200 x 1.5mm PG
EMTTTOL3005015PG	M Trunking Tee Outside Lid 300 x 50 x 1.5mm PG
EMTTTOL3007515PG	M Trunking Tee Outside Lid 300 x 75 x 1.5mm PG
EMTTTOL3001015PG	M Trunking Tee Outside Lid 300 x 100 x 1.5mm PG
EMTTTOL3001515PG	M Trunking Tee Outside Lid 300 x 150 x 1.5mm PG
EMTTTOL3003015PG	M Trunking Tee Outside Lid 300 x 200 x 1.5mm PG
EMTTTOL3003020PG	M Trunking Tee Outside Lid 300 x 300 x 2.0mm PG



Product Selection Guide	Other Finish Options
Replace PG by HG	Hot Dip Galvanised (HDG)
Replace PG by HGGR	Epoxy Coated Green
Replace PG by HGWH	Epoxy Coated White

Unequal Tee options available upon request / re-confirmation.



Equal Tee Inside Lid - Pre Galvanised (PG)

Item Code	Description
EMTETIL0505010PG	M Trunking Equal T Inside Lid 50 x 50 x 1.0 mm PG
EMTETIL0755010PG	M Trunking Equal T Inside Lid 75 x 50 x 1.0 mm PG
EMTETIL0757512PG	M Trunking Equal T Inside Lid 75 x 75 x 1.2 mm PG
EMTETIL1005012PG	M Trunking Equal T Inside Lid 100 x 50 x 1.2mm PG
EMTETIL1007512PG	M Trunking Equal T Inside Lid 100 x 75 x 1.2mm PG
EMTETIL1001012PG	M Trunking Equal T Inside Lid 100 x 100 x 1.2mm PG
EMTETIL1505012PG	M Trunking Equal T Inside Lid 150 x 50 x 1.2mm PG
EMTETIL1507512PG	M Trunking Equal T Inside Lid 150 x 75 x 1.2mm PG
EMTETIL1501012PG	M Trunking Equal T Inside Lid 150 x 100 x 1.2mm PG
EMTETIL1501512PG	M Trunking Equal T Inside Lid 150 x 150 x 1.5mm PG
EMTETIL2005012PG	M Trunking Equal T Inside Lid 200 x 50 x 1.2mm PG
EMTETIL2007512PG	M Trunking Equal T Inside Lid 200 x 75 x 1.2mm PG
EMTETIL2001015PG	M Trunking Equal T Inside Lid 200 x 100 x 1.5mm PG
EMTETIL2001515PG	M Trunking Equal T Inside Lid 200 x 150 x 1.5mm PG
EMTETIL2002015PG	M Trunking Equal T Inside Lid 200 x 200 x 1.5mm PG
EMTETIL3005015PG	M Trunking Equal T Inside Lid 300 x 50 x 1.5mm PG
EMTETIL3007515PG	M Trunking Equal T Inside Lid 300 x 75 x 1.5mm PG
EMTETIL3001015PG	M Trunking Equal T Inside Lid 300 x 100 x 1.5mm PG
EMTETIL3001515PG	M Trunking Equal T Inside Lid 300 x 150 x 1.5mm PG
EMTETIL3003015PG	M Trunking Equal T Inside Lid 300 x 200 x 1.5mm PG
EMTETIL3003020PG	M Trunking Equal T Inside Lid 300 x 300 x 2.0mm PG



Product Selection Guide	Other Finish Options
Replace PG by HG	Hot Dip Galvanised (HDG)
Replace PG by HGGR	Epoxy Coated Green
Replace PG by HGWH	Epoxy Coated White

Unequal Tee options available upon request / re-confirmation.



DECODUCT METAL CABLE TRUNKING ACCESSORIES

Equal Crossover Top Lid - Pre Galvanised (PG)

Item Code	Description
EMTCTTL050510PG	M Trunking Cross T Top Lid 50 x 50 x 1.0 mm PG
EMTCTTL755010PG	M Trunking Cross T Top Lid 75 x 50 x 1.0 mm PG
EMTCTTL757512PG	M Trunking Cross T Top Lid 75 x 75 x 1.2 mm PG
EMTCTTL100512PG	M Trunking Cross T Top Lid 100 x 50 x 1.2mm PG
EMTCTTL107512PG	M Trunking Cross T Top Lid 100 x 75 x 1.2mm PG
EMTCTTL101012PG	M Trunking Cross T Top Lid 100 x 100 x 1.2mm PG
EMTCTTL150512PG	M Trunking Cross T Top Lid 150 x 50 x 1.2mm PG
EMTCTTL157512PG	M Trunking Cross T Top Lid 150 x 75 x 1.2mm PG
EMTCTTL151012PG	M Trunking Cross T Top Lid 150 x 100 x 1.2mm PG
EMTCTTL151515PG	M Trunking Cross T Top Lid 150 x 150 x 1.5mm PG
EMTCTTL200512PG	M Trunking Cross T Top Lid 200 x 50 x 1.2mm PG
EMTCTTL207512PG	M Trunking Cross T Top Lid 200 x 75 x 1.2mm PG
EMTCTTL201015PG	M Trunking Cross T Top Lid 200 x 100 x 1.5mm PG
EMTCTTL201515PG	M Trunking Cross T Top Lid 200 x 150 x 1.5mm PG
EMTCTTL202015PG	M Trunking Cross T Top Lid 200 x 200 x 1.5mm PG
EMTCTTL300515PG	M Trunking Cross T Top Lid 300 x 50 x 1.5mm PG
EMTCTTL307515PG	M Trunking Cross T Top Lid 300 x 75 x 1.5mm PG
EMTCTTL301015PG	M Trunking Cross T Top Lid 300 x 100 x 1.5mm PG
EMTCTTL301515PG	M Trunking Cross T Top Lid 300 x 150 x 1.5mm PG
EMTCTTL302015PG	M Trunking Cross T Top Lid 300 x 200 x 1.5mm PG
EMTCTTL303020PG	M Trunking Cross T Top Lid 300 x 300 x 2.0mm PG



Product Selection Guide	Other Finish Options
Replace PG by HG	Hot Dip Galvanised (HDG)
Replace PG by HGGR	Epoxy Coated Green
Replace PG by HGWH	Epoxy Coated White

Unequal Crossover options available upon request / re-confirmation.

Reducer - Pre Galvanised (PG)

Item Code	Description
EMTR7575050510PG	M Trunking Reducer 75 x 75 x 50 x 50 x 1.0 mm PG
EMTR1005050510PG	M Trunking Reducer 100 x 50 x 50 x 50 x 1.0mm PG
EMTR1515101010PG	M Trunking Reducer 150 x 150 x 100 x 100 x 1.0mm PG
EMTR1010050512PG	M Trunking Reducer 100 x 100 x 50 x 50 x 1.2mm PG
EMTR1005050512PG	M Trunking Reducer 100 x 50 x 50 x 50 x 1.2mm PG
EMTR1010757512PG	M Trunking Reducer 100 x 100 x 75 x 75 x 1.2mm PG
EMTR2005101012PG	M Trunking Reducer 200 x 50 x 100 x 100 x 1.2mm PG
EMTR1515101012PG	M Trunking Reducer 150 x 150 x 100 x 100 x 1.2mm PG
EMTR1510101012PG	M Trunking Reducer 150 x 100 x 100 x 100 x 1.2mm PG
EMTR1010050515PG	M Trunking Reducer 100 x 100 x 50 x 50 x 1.5mm PG
EMTR1510757515PG	M Trunking Reducer 150 x 100 x 75 x 75 x 1.5mm PG
EMTR1575107515PG	M Trunking Reducer 150 x 75 x 100 x 75 x 1.5mm PG
EMTR1515101015PG	M Trunking Reducer 150 x 150 x 100 x 100 x 1.5mm PG
EMTR7575050515PG	M Trunking Reducer 75 x 75 x 50 x 50 x 1.5mm PG
EMTR1510101015PG	M Trunking Reducer 150 x 100 x 100 x 100 x 1.5mm PG




Product Selection Guide	Other Finish Options
Replace PG by HG	Hot Dip Galvanised (HDG)
Replace PG by HGGR	Epoxy Coated Green
Replace PG by HGWH	Epoxy Coated White

Other Sizes, Thickness & colours available upon request / re-confirmation.


Product codes may vary slightly.

DECODUCT METAL CABLE TRUNKING ACCESSORIES

Straight Coupler - Pre Galvanised (PG)

Item Code	Description		Product Selection Guide	Other Finish Options
EMTCPR05005010PG	M Trunking ST. Coupler 50 x 50 x 1.0mm PG		Replace PG by HG	Hot Dip Galvanised (HDG)
EMTCPR07507510PG	M Trunking ST. Coupler 75 x 75 x 1.0mm PG	Replace PG by HGGR	Epoxy Coated Green	
EMTCPR10010010PG	M Trunking ST. Coupler 100 x 100 x 1.0mm PG	Replace PG by HGWH	Epoxy Coated White	
EMTCPR15010010PG	M Trunking ST. Coupler 150 x 100 x 1.0mm PG			
EMTCPR05005012PG	M Trunking ST. Coupler 50 x 50 x 1.2mm PG			
EMTCPR10010012PG	M Trunking ST. Coupler 100 x 100 x 1.2mm PG			
EMTCPR10005012PG	M Trunking ST. Coupler 100 x 50 x 1.2mm PG			
EMTCPR15010012PG	M Trunking ST. Coupler 150 x 100 x 1.2mm PG			
EMTCPR15015012PG	M Trunking ST. Coupler 150 x 150 x 1.2mm PG			
EMTCPR07507515PG	M Trunking ST. Coupler 75 x 75 x 1.5mm PG			
EMTCPR10005015PG	M Trunking ST. Coupler 100 x 50 x 1.5mm PG			
EMTCPR10007515PG	M Trunking ST. Coupler 100 x 75 x 1.5mm PG			
EMTCPR10010015PG	M Trunking ST. Coupler 100 x 100 x 1.5mm PG			
EMTCPR15007515PG	M Trunking ST. Coupler 150 x 75 x 1.5mm PG			
EMTCPR15010015PG	M Trunking ST. Coupler 150 x 100 x 1.5mm PG			
EMTCPR15015020PG	M Trunking ST. Coupler 150 x 150 x 2.0mm PG			

End Flange - Pre Galvanised (PG)

Item Code	Description		Product Selection Guide	Other Finish Options
EMT1EF05005010PG	M Trunking End Flange Single 50 x 50 x 1.0mm PG		Replace PG by HG	Hot Dip Galvanised (HDG)
EMT1EF07507510PG	M Trunking End Flange Single 75 x 75 x 1.0mm PG	Replace PG by HGGR	Epoxy Coated Green	
EMT1EF10010010PG	M Trunking End Flange Single 100 x 100 x 1.0mm PG	Replace PG by HGWH	Epoxy Coated White	
EMT1EF15010010PG	M Trunking End Flange Single 150 x 100 x 1.0mm PG			
EMT1EF05005012PG	M Trunking End Flange Single 50 x 50 x 1.2mm PG			
EMT1EF10010012PG	M Trunking End Flange Single 100 x 100 x 1.2mm PG			
EMT1EF10005010PG	M Trunking End Flange Single 100 x 50 x 1.2mm PG			
EMT1EF15010012PG	M Trunking End Flange Single 150 x 100 x 1.2mm PG			
EMT1EF15015012PG	M Trunking End Flange Single 150 x 150 x 1.2mm PG			
EMT1EF07507515PG	M Trunking End Flange Single 75 x 75 x 1.5mm PG			
EMT1EF10005015PG	M Trunking End Flange Single 100 x 50 x 1.5mm PG			
EMT1EF10007515PG	M Trunking End Flange Single 100 x 75 x 1.5mm PG			
EMT1EF10010015PG	M Trunking End Flange Single 100 x 100 x 1.5mm PG			
EMT1EF15007515PG	M Trunking End Flange Single 150 x 75 x 1.5mm PG			
EMT1EF15010015PG	M Trunking End Flange Single 150 x 100 x 1.5mm PG			
EMT1EF15015020PG	M Trunking End Flange Single 150 x 150 x 2.0mm PG			

End Flange 2 Pcs options available upon request / re-confirmation.

Other Sizes, Thickness & colours available upon request / re-confirmation.

Product codes may vary slightly.

DECODUCT METAL CABLE TRUNKING ACCESSORIES

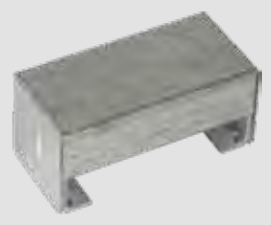
Hanger - Pre Galvanised (PG)

Item Code	Description		Product Selection Guide	Other Finish Options
EMTRHNG050510PG	M Trunking Hanger 50 x 50 x 1.0mm PG		Replace PG by HG	Hot Dip Galvanised (HDG)
EMTRHNG050515PG	M Trunking Hanger 50 x 50 x 1.5mm PG		Replace PG by HGGR	Epoxy Coated Green
EMTRHNG101012PG	M Trunking Hanger 100 x 100 x 1.2mm PG		Replace PG by HGWH	Epoxy Coated White
EMTRHNG101015PG	M Trunking Hanger 100 x 100 x 1.5mm PG			
EMTRHNG151015PG	M Trunking Hanger 150 x 100 x 1.5mm PG			
EMTRHNG151515PG	M Trunking Hanger 150 x 150 x 1.5mm PG			

Horizontal Offset - Pre Galvanised (PG)

Item Code	Description		Product Selection Guide	Other Finish Options
EMTHOF10010020PG	M Trunking Horizontal Offset 100 x 100 x 2.0mm PG		Replace PG by HG	Hot Dip Galvanised (HDG)
			Replace PG by HGGR	Epoxy Coated Green
			Replace PG by HGWH	Epoxy Coated White

End Cap - Pre Galvanised (PG)

Item Code	Description		Product Selection Guide	Other Finish Options
EMTEC05005010PG	M Trunking End Cap 50 x 50 x 1.0 mm PG		Replace PG by HG	Hot Dip Galvanised (HDG)
EMTEC07505010PG	M Trunking End Cap 75 x 50 x 1.0 mm PG		Replace PG by HGGR	Epoxy Coated Green
EMTEC07507512PG	M Trunking End Cap 75 x 75 x 1.2 mm PG		Replace PG by HGWH	Epoxy Coated White
EMTEC10005012PG	M Trunking End Cap 100 x 50 x 1.2mm PG			
EMTEC10007512PG	M Trunking End Cap 100 x 75 x 1.2mm PG			
EMTEC10010012PG	M Trunking End Cap 100 x 100 x 1.2mm PG			
EMTEC15005012PG	M Trunking End Cap 150 x 50 x 1.2mm PG			
EMTEC15007512PG	M Trunking End Cap 150 x 75 x 1.2mm PG			
EMTEC15010012PG	M Trunking End Cap 150 x 100 x 1.2mm PG			
EMTEC15015015PG	M Trunking End Cap 150 x 150 x 1.5mm PG			
EMTEC20005012PG	M Trunking End Cap 200 x 50 x 1.2mm PG			
EMTEC20010015PG	M Trunking End Cap 200 x 100 x 1.5mm PG			
EMTEC20010015PG	M Trunking End Cap 200 x 150 x 1.5mm PG			
EMTEC20020015PG	M Trunking End Cap 200 x 200 x 1.5mm PG			
EMTEC22505012PG	M Trunking End Cap 225 x 50 x 1.2mm PG			
EMTEC22510015PG	M Trunking End Cap 225 x 100 x 1.5mm PG			
EMTEC22515015PG	M Trunking End Cap 225 x 150 x 1.5mm PG			
EMTEC22520015PG	M Trunking End Cap 225 x 200 x 1.5mm PG			
EMTEC30005015PG	M Trunking End Cap 300 x 50 x 1.5mm PG			
EMTEC30007515PG	M Trunking End Cap 300 x 75 x 1.5mm PG			
EMTEC30010015PG	M Trunking End Cap 300 x 100 x 1.5mm PG			
EMTEC30015015PG	M Trunking End Cap 300 x 150 x 1.5mm PG			
EMTEC30022515PG	M Trunking End Cap 300 x 225 x 1.5mm PG			
EMTEC30030020PG	M Trunking End Cap 300 x 300 x 2.0mm PG			



DECODUCT METAL TRUNKING SYSTEM

With the wide use of computerized processing equipment in industrial facilities, the minimization of interference induced in the communication link between in-plant transducers or primary elements and controllers is critical.

The longer the control signal cable, the more susceptible it is to induced electrical noise. Shielding these cables with a copper braid or metallic tape will protect them from each other, but for long runs a better method of shielding is necessary for protection against external interferences. Numerous control signal cables can be protected from interference by using a properly designed and shielded enclosed-DECODUCT Cable Trunking is the perfect solution.

DECODUCT G. I. Return Edge Cable Trunking system complies with BSEN 50085-1, BSEN 50085-2-1 manufactured from Hot Dip Galvanised Steel to BSEN 10346 and BSEN 10143, which provides excellent protection against corrosion.

DECODUCT G. I. Cable Trunking System is fast and easy to install with an easy fastening system and has increased strength and rigidity because of smooth return edges.

Bodies and fittings are available with 1, 2 or 3 compartments in a wide range of widths and heights. Unless otherwise requested, these will be supplied with equal compartments.

CABLE TRUNKING CAPACITY

Trunking Capacity Factor	Trunking Size mm x mm	CONDUCTOR SIZE mm ²												
		SOLID		STRANDED CABLES										
		1.5	2.5	1.5	2.5	4	6	10	16	25	35	50	70	95
1037	50 x 50	146	101	128	90	68	45	28	20	13	10	7	5	4
1555	75 x 50	219	152	191	136	102	67	42	30	20	16	11	8	6
2371	75 x 75	333	232	292	207	155	103	65	47	31	24	17	13	10
2091	100 x 50	294	205	258	183	137	91	57	41	27	22	15	11	9
3189	100 x 75	449	312	393	279	209	139	87	63	42	33	24	18	14
4252	100 x 100	598	416	524	372	279	185	117	84	56	44	32	24	18
3162	150 x 50	445	310	390	277	208	138	87	62	41	33	23	17	13
4743	150 x 75	668	465	585	416	312	207	130	94	62	49	35	26	20
6394	150 x 100	900	626	789	560	420	279	176	127	84	67	48	36	28
9697	150 x 150	1365	950	1197	850	637	423	267	192	128	102	73	54	42
7166	225 x 75	1009	702	885	628	471	312	197	142	95	75	53	40	40
14652	225 x 150	2063	1436	1808	1285	963	639	403	291	194	154	110	82	82
CABLE CAPACITY FACTOR		7.1	10.2	8.1	11.4	15.2	22.9	36.3	50.3	75.4	95	133	177	177

The light shaded section of the table indicates the number of identical cables which can be installed in any size of trunking. If mixed cables are being installed the maximum number can be derived using the dark shaded section of the cable. For each size of cable multiply the number to be installed by its own Common factor. Add together the results of these calculations for all cable sizes. The Trunking Capacity Factory for the intended trunking size must be equal to or greater than this total.

EXAMPLE

$$50 \times 10.0\text{mm}^2 \text{ Stranded @ } 36.3 = 1815$$

$$30 \times 2.5\text{mm}^2 \text{ Solid @ } 36.3 = \underline{306}$$

$$2121$$

Trunking Capacity Factor for 100 x 50 = 2091 < 2121 hence, too small.

Trunking Capacity Factor for 75 x 75 = 2371 > 2121 hence, Correct size.

**MANUFACTURED IN ACCORDANCE
WITH BRITISH STANDARDS**

**Ladder and Accessories: BS EN 10143
BS EN 1461
BS 1449: Part 1**



DECODUCT METAL CABLE LADDER SYSTEM



DECODUCT METAL CABLE LADDER SYSTEM - HEAVY DUTY

Finish : Hot Dip Galvanised after fabrication, 100mm flange height, Standard length 3 Metre

Item Code	Description
EMCLD10010015HHG	Cable Ladder 100 x 100 x 1.5mm HHG
EMCLD10012515HHG	Cable Ladder 100 x 125 x 1.5mm HHG
EMCLD15010015HHG	Cable Ladder 150 x 100 x 1.5mm HHG
EMCLD15012515HHG	Cable Ladder 150 x 125 x 1.5mm HHG
EMCLD20010015HHG	Cable Ladder 200 x 100 x 1.5mm HHG
EMCLD20012515HHG	Cable Ladder 200 x 125 x 1.5mm HHG
EMCLD30010015HHG	Cable Ladder 300 x 100 x 1.5mm HHG
EMCLD30012515HHG	Cable Ladder 300 x 125 x 1.5mm HHG
EMCLD45010020HHG	Cable Ladder 450 x 100 x 2.0mm HHG
EMCLD45012520HHG	Cable Ladder 450 x 125 x 2.0mm HHG
EMCLD60010020HHG	Cable Ladder 600 x 100 x 2.0mm HHG
EMCLD60012520HHG	Cable Ladder 600 x 125 x 2.0mm HHG
EMCLD75010020HHG	Cable Ladder 750 x 100 x 2.0mm HHG
EMCLD75012520HHG	Cable Ladder 750 x 125 x 2.0mm HHG
EMCLD90010020HHG	Cable Ladder 900 x 100 x 2.0mm HHG
EMCLD90012520HHG	Cable Ladder 900 x 125 x 2.0mm HHG
EMCL100010020HHG	Cable Ladder 1000 x 100 x 2.0mm HHG
EMCL100012520HHG	Cable Ladder 1000 x 125 x 2.0mm HHG



Product Selection Guide	Other Height Options
Replace HG by PG	125mm
Replace HG by HGGR	150mm
Replace HG by HGWH	Pre Galvanised (PG)
	Epoxy Coated Green
	Epoxy Coated White

DECODUCT METAL CABLE LADDER SYSTEM - MEDIUM DUTY

Finish : Hot Dip Galvanised after fabrication, 75mm flange height, Standard length 3 Metre

Item Code	Description
EMCLD10007515HHG	Cable Ladder 100 x 75 x 1.5mm HHG
EMCLD15007515HHG	Cable Ladder 150 x 75 x 1.5mm HHG
EMCLD20007515HHG	Cable Ladder 200 x 75 x 1.5mm HHG
EMCLD30007515HHG	Cable Ladder 300 x 75 x 1.5mm HHG
EMCLD45007520HHG	Cable Ladder 450 x 75 x 2.0mm HHG
EMCLD60007520HHG	Cable Ladder 600 x 75 x 2.0mm HHG
EMCLD75007520HHG	Cable Ladder 750 x 75 x 2.0mm HHG
EMCLD90007520HHG	Cable Ladder 900 x 75 x 2.0mm HHG
EMCLD10007520HHG	Cable Ladder 1000 x 75 x 2.0mm HHG



Product Selection Guide	Other Finish Options
Replace HG by PG	Pre Galvanised PG
Replace HG by HGGR	Epoxy Coated Green
Replace HG by HGWH	Epoxy Coated White

DECODUCT METAL CABLE LADDER SYSTEM - LIGHT DUTY

Finish : Hot Dip Galvanised after fabrication, 50mm flange height, Standard length 3 Metre

Item Code	Description
EMCLD10005015HHG	Cable Ladder 100 x 50 x 1.5mm HHG
EMCLD15005015HHG	Cable Ladder 150 x 50 x 1.5mm HHG
EMCLD20005015HHG	Cable Ladder 200 x 50 x 1.5mm HHG
EMCLD30005015HHG	Cable Ladder 300 x 50 x 1.5mm HHG
EMCLD40005015HHG	Cable Ladder 400 x 50 x 1.5mm HHG
EMCLD45005020HHG	Cable Ladder 450 x 50 x 2.0mm HHG
EMCLD60005020HHG	Cable Ladder 600 x 50 x 2.0mm HHG
EMCLD75005020HHG	Cable Ladder 750 x 50 x 2.0mm HHG
EMCLD90005020HHG	Cable Ladder 900 x 50 x 2.0mm HHG
EMCLD10005020HHG	Cable Ladder 1000 x 50 x 2.0mm HHG



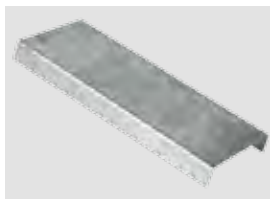
Product Selection Guide	Other Finish Options
Replace HG by PG	Pre Galvanised (PG)
Replace HG by HGGR	Epoxy Coated Green
Replace HG by HGWH	Epoxy Coated White

Cable ladder covers available upon request / re-confirmation.

DECODUCT METAL CABLE LADDER COVER, STRAIGHT FLANGE

Finish : Hot Dip Galvanised after fabrication, Standard length 3 Metre

Item Code	Description
EMCLCVR10010HHG	Cable Ladder Cover 100 x 1.0mm HHG
EMCLCVR10012HHG	Cable Ladder Cover 100 x 1.2mm HHG
EMCLCVR10015HHG	Cable Ladder Cover 100 x 1.5mm HHG
EMCLCVR15010HHG	Cable Ladder Cover 150 x 1.0mm HHG
EMCLCVR15012HHG	Cable Ladder Cover 150 x 1.2mm HHG
EMCLCVR15015HHG	Cable Ladder Cover 150 x 1.5mm HHG
EMCLCVR20010HHG	Cable Ladder Cover 200 x 1.0mm HHG
EMCLCVR20012HHG	Cable Ladder Cover 200 x 1.2mm HHG
EMCLCVR20015HHG	Cable Ladder Cover 200 x 1.5mm HHG
EMCLCVR30010HHG	Cable Ladder Cover 300 x 1.0mm HHG
EMCLCVR30012HHG	Cable Ladder Cover 300 x 1.2mm HHG
EMCLCVR30015HHG	Cable Ladder Cover 300 x 1.5mm HHG
EMCLCVR45010HHG	Cable Ladder Cover 450 x 1.0mm HHG
EMCLCVR45012HHG	Cable Ladder Cover 450 x 1.2mm HHG
EMCLCVR45020HHG	Cable Ladder Cover 450 x 2.0mm HHG
EMCLCVR60010HHG	Cable Ladder Cover 600 x 1.0mm HHG
EMCLCVR60012HHG	Cable Ladder Cover 600 x 1.2mm HHG
EMCLCVR60020HHG	Cable Ladder Cover 600 x 2.0mm HHG
EMCLCVR75010HHG	Cable Ladder Cover 750 x 1.0mm HHG
EMCLCVR75012HHG	Cable Ladder Cover 750 x 1.2mm HHG
EMCLCVR75020HHG	Cable Ladder Cover 750 x 2.0mm HHG
EMCLCVR90010HHG	Cable Ladder Cover 900 x 1.0mm HHG
EMCLCVR90012HHG	Cable Ladder Cover 900 x 1.2mm HHG
EMCLCVR90020HHG	Cable Ladder Cover 900 x 2.0mm HHG
EMCLCVR100010HHG	Cable Ladder Cover 1000 x 1.0mm HHG
EMCLCVR100012HHG	Cable Ladder Cover 1000 x 1.2mm HHG
EMCLCVR100020HHG	Cable Ladder Cover 1000 x 2.0mm HHG



Product Selection Guide	Other Finish Options
Replace HG by PG	Pre Galvanised (PG)
Replace HG by HGGR	Epoxy Coated Green
Replace HG by HGWH	Epoxy Coated White



Other Sizes, Thickness & colours available upon request / re-confirmation.

Product codes may vary slightly.

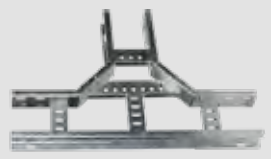
DECODUCT METAL CABLE LADDER ACCESSORIES

90° Bend - Hot Dip Galvanised (HDG)


Item Code	Description		Other Height Options
EML90B1001020HG	C Ladder 90° F Bend 100 x 100 x 1.5mm HG		50mm
EML90B1501020HG	C Ladder 90° F Bend 150 x 100 x 1.5mm HG		75mm
EML90B0201015HG	C Ladder 90° F Bend 200 x 100 x 1.5mm HG		125mm
EML90B0301015HG	C Ladder 90° F Bend 300 x 100 x 1.5mm HG	150mm	
EML90B0451020HG	C Ladder 90° F Bend 450 x 100 x 2.0mm HG	Product Selection Guide	Other Finish Options
EML90B0601020HG	C Ladder 90° F Bend 600 x 100 x 2.0mm HG	Replace HG By PG	Pre Galvanised (PG)
EML90H0901020HG	C Ladder 90° F Bend 900 x 100 x 2.0mm HG	Replace HG By HGGR	Epoxy Coated Green
EML90B10001020HG	C Ladder 90° F Bend 1000 x 100 x 2.0mm HG	Replace HG By HGWH	Epoxy Coated White
EML90B1201020HG	C Ladder 90° F Bend 1200 x 100 x 2.0mm HG		

45° Bend Options Available Upon Request

Equal Tee - Hot Dip Galvanised (HDG)

Item Code	Description		Other Height Options
EMLET0101015HG	C Ladder Equal Tee 100 x 100 x 1.5mm HHG		50mm
EMLET0151015HG	C Ladder Equal Tee 150 x 100 x 1.5mm HHG		75mm
EMLET0201015HG	C Ladder Equal Tee 200 x 100 x 1.5mm HHG		125mm
EMLET0301015HG	C Ladder Equal Tee 300 x 100 x 1.5mm HHG	150mm	
EMLET0451020HG	C Ladder Equal Tee 450 x 100 x 2.0mm HHG	Product Selection Guide	Other Finish Options
EMLET0601020HG	C Ladder Equal Tee 600 x 100 x 2.0mm HHG	Replace HG By PG	Pre Galvanised (PG)
EMLET0751020HG	C Ladder Equal Tee 750 x 100 x 2.0mm HHG	Replace HG By HGGR	Epoxy Coated Green
EMLET0901020HG	C Ladder Equal Tee 900 x 100 x 2.0mm HHG	Replace HG By HGWH	Epoxy Coated White
EMLET1001020HG	C Ladder Equal Tee 1000 x 100 x 2.0mmHHG		

Unequal Tee - Hot Dip Galvanised (HDG)

Item Code	Description		Other Height Options
EMLUET60451020HG	C Ladder Uneq T 600 x 100-450 x 100 x 2.0mm HG		50mm
EMLUET90601020HG	C Ladder Uneq T 900 x 100-600 x 100 x 2.0mm HG		75mm
			125mm
		150mm	
		Product Selection Guide	Other Finish Options
		Replace HG by PG	Pre Galvanised (PGP)
		Replace HG by HGGR	Epoxy Coated Green
		Replace HG b y HGWH	Epoxy Coated White

DECODUCT METAL CABLE LADDER ACCESSORIES

Equal Crossover - Hot Dip Galvanised (HDG)

Item Code	Description
EMLECO101015HG	C Ladder E Crossover 100 x 100 x 1.5mm HG
EMLECO151015HG	C Ladder E Crossover 150 x 100 x 1.5mm HG
EMLECO201015HG	C Ladder E Crossover 200 x 100 x 1.5mm HG
EMLECO301015HG	C Ladder E Crossover 300 x 100 x 1.5mm HG
EMLECO451020HG	C Ladder E Crossover 450 x 100 x 2.0mm HG
EMLECO601020HG	C Ladder E Crossover 600 x 100 x 2.0mm HG
EMLECO751020HG	C Ladder E Crossover 900 x 100 x 2.0mm HG
EMLECO901020HG	C Ladder E Crossover 1000 x 100 x 2.0mm HG
EMLECO1001020HG	C Ladder E Crossover 1200 x 100 x 2.0mm HG



Other Height Options
50mm
75mm
125mm
150mm

Product Selection Guide	Other Finish Options
Replace HG by PG	Pre Galvanised (PG)
Replace HG by HGGR	Epoxy Coated Green
Replace HG by HGWH	Epoxy Coated White

Unequal Crossover options available upon request / re-confirmation.

90° Outside Riser - Hot Dip Galvanised (HDG)

Item Code	Description
EML90OR0101015HG	C Ladder 90° O S RISR 100 x 100 x 1.5mm HHG
EML90OR0151015HG	C Ladder 90° O S RISR 150 x 100 x 1.5mm HHG
EML90OR0201015HG	C Ladder 90° O S RISR 200 x 100 x 1.5mm HHG
EML90OR0301015HG	C Ladder 90° O S RISR 300 x 100 x 1.5mm HHG
EML90OR0451020HG	C Ladder 90° O S RISR 450 x 100 x 2.0mm HHG
EML90OR0601020HG	C Ladder 90° O S RISR 600 x 100 x 2.0mm HHG
EML90OR0751020HG	C Ladder 90° O S RISR 750 x 100 x 2.0mm HHG
EML90OR0901020HG	C Ladder 90° O S RISR 900 x 100 x 2.0mm HHG
EML90OR1001020HG	C Ladder 90° O S RISR 1000 x 100 x 2.0mm HHG



Other Height Options
50mm
75mm
125mm
150mm

Product Selection Guide	Other Finish Options
Replace HG by PG	Pre Galvanised (PG)
Replace HG by HGGR	Epoxy Coated Green
Replace HG by HGWH	Epoxy Coated White

45° Riser options available upon request / re-confirmation.

90° Inside Riser - Hot Dip Galvanised (HDG)

Item Code	Description
EML90IR0101015HG	C Ladder 90° I S RISR 100 x 100 x 1.5mm HG
EML90IR0151015HG	C Ladder 90° I S RISR 150 x 100 x 1.5mm HG
EML90IR0201015HG	C Ladder 90° I S RISR 200 x 100 x 1.5mm HG
EML90IR0301015HG	C Ladder 90° I S RISR 300 x 100 x 1.5mm HG
EML90IR0451020HG	C Ladder 90° I S RISR 450 x 100 x 2.0mm HG
EML90IR0601020HG	C Ladder 90° I S RISR 600 x 100 x 2.0mm HG
EML90IR0751020HG	C Ladder 90° I S RISR 900 x 100 x 2.0mm HG
EML90IR0901020HG	C Ladder 90° I S RISR 1000 x 100 x 2.0mm HG
EML90IR1001020HG	C Ladder 90° I S RISR 1200 x 100 x 2.0mm HG



Other Height Options
50mm
75mm
125mm
150mm

Product Selection Guide	Other Finish Options
Replace HG by PG	Pre Galvanised (PG)
Replace HG by HGGR	Epoxy Coated Green
Replace HG by HGWH	Epoxy Coated White

45° Riser options available upon request / re-confirmation.

DECODUCT METAL CABLE LADDER ACCESSORIES

Offset Reducer - Hot Dip Galvanised (HDG)

Item Code	Description
EMLORD60451020HG	C Ladder Offset Redcr 600 x 450 x 100 x 2.0mm HG
EMLORD90601020HG	C Ladder Offset Redcr 900 x 600 x 100 x 2.0mm HG



Other Height Options

50mm

75mm

125mm

150mm

Product Selection Guide

Replace HG by PG

Replace HG by HGGR

Replace HG by HGWH

Other Finish Options

Pre Galvanised (PG)

Epoxy Coated Green

Epoxy Coated White

Straight Reducer - Hot Dip Galvanised (HDG)

Item Code	Description
EMLSR45301020HG	C Ladder ST Reducr 450 x 300 x 100 x 2.0mm HG
EMLSR60301020HG	C Ladder ST Reducr 600 x 300 x 100 x 2.0mm HG
EMLSR60451020HG	C Ladder ST Reducr 600 x 450 x 100 x 2.0mm HG
EMLSR90601020HG	C Ladder ST Reducr 900 x 600 x 100 x 2.0mm HG



Other Height Options

50mm

75mm

125mm

150mm

Product Selection Guide

Replace HG by PG

Replace HG by HGGR

Replace HG by HGWH

Other Finish Options

Pre Galvanised (PG)

Epoxy Coated Green

Epoxy Coated White

Left Hand & Right Hand reducer options available upon request / re-confirmation.

Coupler - Hot Dip Galvanised (HDG)

Item Code	Description
EMFDLCPH10015HG	C Ladder Coupler 100 x 1.5mm HG
EMFDLCPH10020HG	C Ladder Coupler 100 x 2.0mm HG



Other Height Options

50mm

75mm

125mm

150mm

Product Selection Guide

Replace HG by PG

Replace HG by HGGR

Replace HG by HGWH

Other Finish Options

Pre Galvanised (PG)

Epoxy Coated Green

Epoxy Coated White

DECODUCT METAL CABLE LADDER SYSTEM

DECODUCT Cable Ladder consisting of two longitudinal side members connected by individual transverse members is designed to support power cable, control cable, instrumentation, and telecom / data.

- Typically used for heavy duty power applications by power plants, pulp and paper mills, petrochemical plants and industrial construction requiring strength and reliability.
- Our flange design utilizes exclusive technology which completely welds entire cross section of rungs to the outside of the rails for optimum structural integrity and reduced side rail rotation.
- Best for supporting various diameter power cables, instrumentation, and control.
- Capable of long support spans of 12 to 24 feet.
- Available in FLANGE IN or FLANGE OUT design.
- Significant cost savings over conduit & wire.

Decoduct Cable ladders are supplied in standard length of 3 mtrs and available in Light Duty, Medium Duty and Heavy Duty ranges. Light Duty range comes complete with an integral coupling system and has a cable laying depth of 30 mm. Medium Duty range comes with side rails and rungs with safety edges and has a cable laying depth of 70 mm. Heavy Duty range also comes with side rails and rungs with safety edges and has a cable laying depth of 95 mm. Decoduct cable ladder systems incorporate slotted side rails to allow the coupling of straight lengths or accessories without the need for drilling additional holes. This reduces installation time, makes the system safer to handle and prevents cables from damage. Decoduct cable ladder systems have a comprehensive purpose designed range of accessories incorporating all the latest features demanded by installation contractors and their clients. Optionally, lids for the Cable ladders can be supplied against customer requirement.

FINISHES

Pre-Galvanised

Decoduct Cable Ladders can be supplied from galvanised steel to BS EN 10143. Average coating thickness is 275 gms/m² and gives excellent corrosion protection with a smooth even coating finish usually suited for applications under normal atmospheric conditions or near dry indoor conditions.

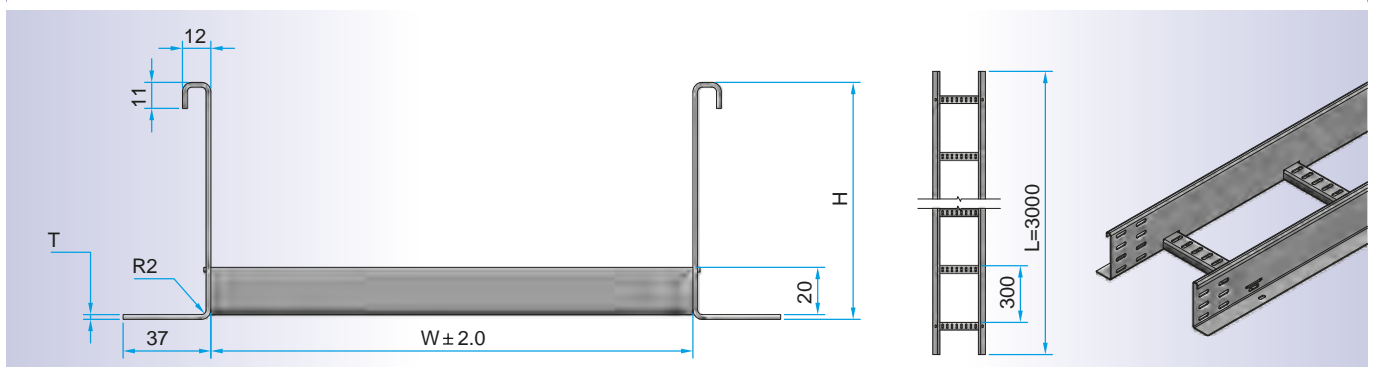
Hot Dip Galvanised

Decoduct Cable Ladders can be supplied by Hot Dip Galvanising to BSEN ISO 1461 after shearing, punching and other operations are carried out on the substrate steel sheet to BS 1449 Part 1. These Cable Ladders are more suitable for harsher and more exposed exterior conditions, since the average coating thickness ranges from 335 – 460 gms/m² depending on the base material thickness which ranges from 1.0 mm to 2.0 mm.

Epoxy Coated

Decoduct Cable Ladders can be supplied epoxy powder coated through an electrostatic system which provides a uniform coating of epoxy. These Cable Ladders are suitable for conditions of high humidity, acids, alkali and organic solvents. The coating will not support combustion or emit toxic fumes. Suitable colour is Grey, however, other colours can be provided on request.

TECHNICAL DATA CABLE LADDER SYSTEM



Size of Cable Ladder

• Length (L)	- 3000 mm
• Width (W)	- 100 to 1000 mm
• Height (H)	- 100 mm
• Thickness (T)	- 2.0 mm
• Rung Spacing	- 300 mm
• Slot Dimension	- 25 x 7 mm
• Applicable Standards	- BSEN 10143, 1461 & BS 1449

Product drawing (For Reference only)

• Surface Finish	- Hot Dip Galvanized
• Average Coating Thickness	- 50 microns
• Nominal Product Sizes	- 200 x 100 x 2.0 mm
(For Reference Only)	- 900 x 100 x 2.0 mm



STANDARD SPECIFICATION

NEMA VE1, EN 61537, EN 50085-1 and EN 50085-2-1

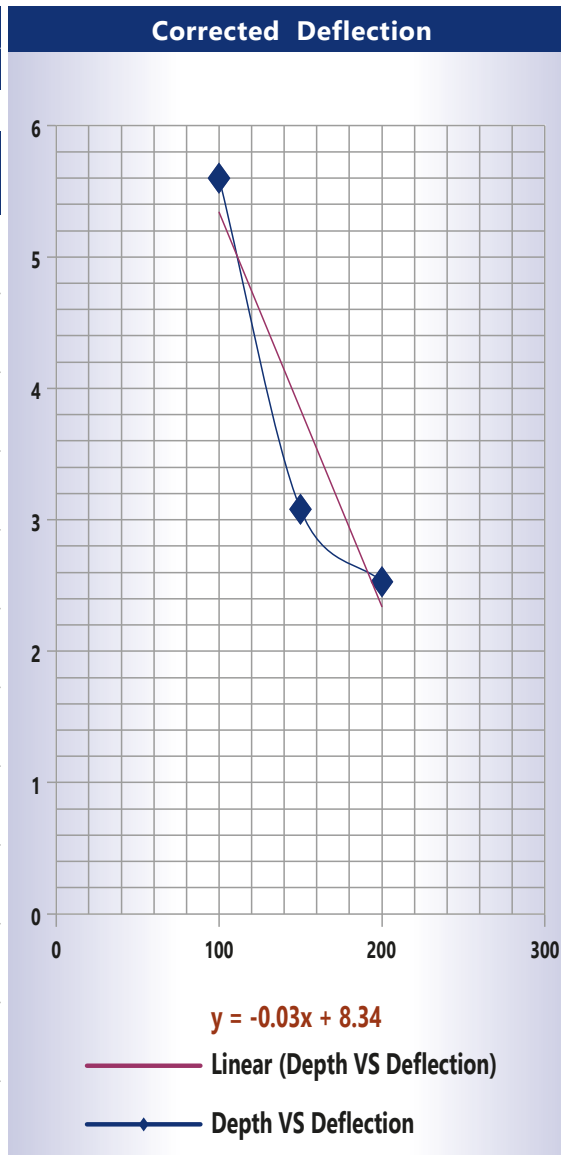
Summary Of Tests

LOAD TEST - CABLE LADDER

Thickness		Width	Depth	Sample Length	Sample Span	Maximum Load			Maximum Deflection				
Nominal	Actual					1	2	3	Average	1	2	3	Average
mm	mm	mm	mm	mm	mm	kg	kg	kg	kg	mm	mm	mm	mm
1.5	1.53	300	100	1800	1500	563.21	562.66	433.24	519.70	2.76	2.74	1.86	2.45
1.5	1.52	300	150	1800	1500	561.89	562.66	433.24	519.26	1.69	1.77	1.38	1.61
1.5	1.53	300	200	1800	1500	433.13	433.13	432.62	432.98	1.26	1.23	1.53	1.34

No of Rungs per Ladder span	4	
Total Load Capacity or SWL	4 x 298	1192

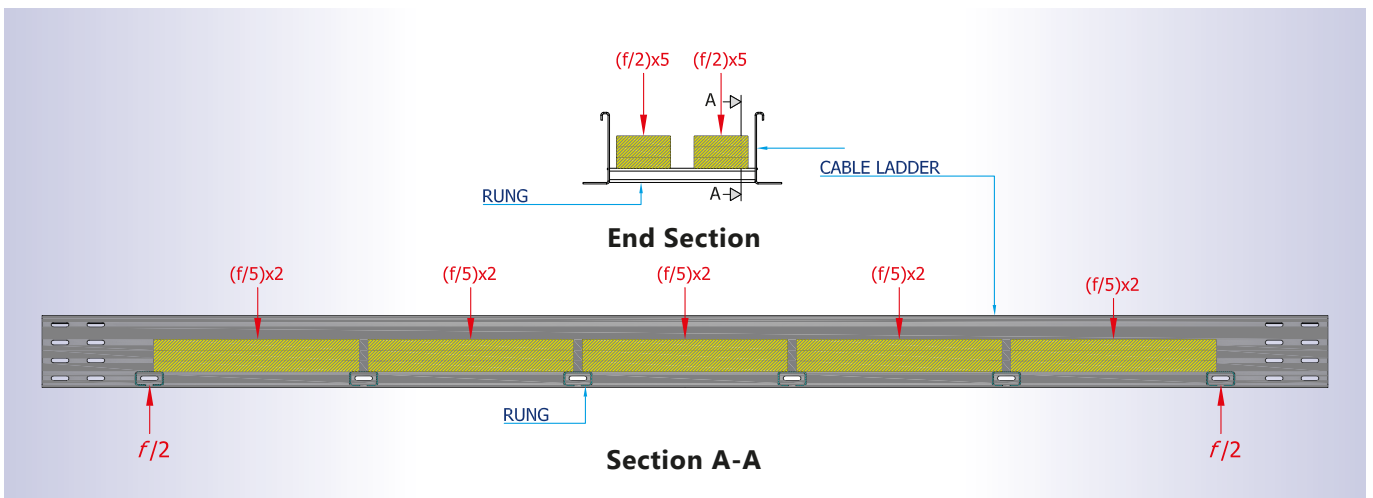
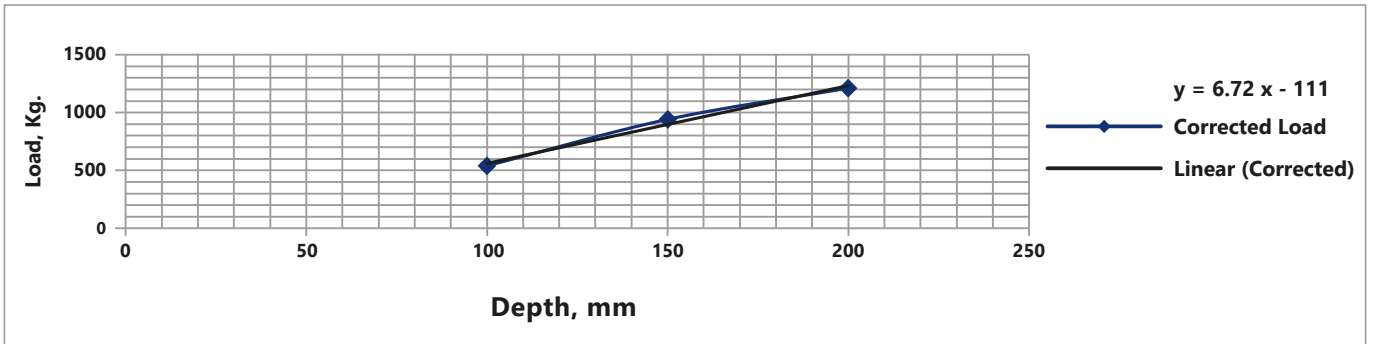
Side Depth	Sample No.	Equation	Deflection	Corrected Load, Kg
100	1	$y=189.77x+33.722$	6.10	514
	2	$y=217.94x-34.719$	5.63	517
	3	$y=239.42x-19.502$	5.06	586
	Average			5.60
150	1	$y=489.43x-264.62$	2.98	974
	2	$y=451.13x-221.32$	3.13	929
	3	$y=437.48x-177.79$	3.13	929
	Average			3.08
200	1	$y=734.96x+490.96$	2.29	1368
	2	$y=639.78x-350.34$	2.41	1268
	3	$y=557.62x-415.93$	2.88	995
	Average			2.53



Graphical Extrapolation		
Depth	Corrected Deflection	Corrected Load, SF = 1.5
mm	mm	kg
50	6.84	150
60	6.54	195
75	6.09	262
80	5.94	284
90	5.64	329
100	5.34	374
110	5.04	419
120	4.74	464
130	4.44	508
140	4.14	553
150	3.84	598
160	3.54	643
170	3.24	687
180	2.94	732
190	2.64	777
200	2.34	822

STANDARD SPECIFICATION

Corrected Load



**MANUFACTURED IN ACCORDANCE
WITH BRITISH STANDARDS**

Metal Floor Distribution System: BS EN 10346



DECODUCT METAL FLOOR DISTRIBUTION SYSTEMS



DECODUCT METAL FLOOR DISTRIBUTION SYSTEM

DECODUCT METAL RAISED FLOOR TRUNKING SYSTEM

Finish : Pre - Galvanised PG, with Cover and Coupler, Standard length 3 Metre

Item Code	Description		Product Selection Guide	Other Finish Options
EM3CTRF2254015PG	MT3 Compartment Raised Floor 225 x 40 x 1.5 PG		Replace PG by HG	Hot Dip Galvanised (HDG)
EM3CTRF2254012HG	MT3 Compartment Raised Floor 225 x 40 x 1.2 HG		Replace PG by HGGR	Epoxy Coated Green
EM3CTRF2254015HG	MT3 Compartment Raised Floor 225 x 40 x 1.5 HG		Replace PG by HGWH	Epoxy Coated White

2 & 3 Compartment options available upon request / re-confirmation.

DECODUCT METAL FLUSH FLOOR TRUNKING SYSTEM

Finish : Pre - Galvanised PG, with Cover and Coupler, Standard length 3 Metre

Item Code	Description		Product Selection Guide	Other Finish Options
EM3CTF15005015PG	MT 3 Compartment Trunking 150 x 50 x 1.5 PG		Replace PG by HG	Hot Dip Galvanised (HDG)
EM3CTF15007515PG	MT 3 Compartment Trunking 150 x 75 x 1.5 PG		Replace PG by HGGR	Epoxy Coated Green
EM3CTFF2252512PG	MT 3 Compartment Trunking 225 x 25 x 1.2 PG		Replace PG by HGWH	Epoxy Coated White

EM3CTFF2252515PG	MT 3 Compartment Trunking 225 x 25 x 1.5 PG			
EM3CTFF2254012PG	MT 3 Compartment Trunking 225 x 40 x 1.2 PG			
EM3CTFF2254015PG	MT 3 Compartment Trunking 225 x 40 x 1.5 PG			
EM3CTFF3503820PG	MT 3 Compartment Trunking 350 x 38 x 20 PG			


2 & 3 Compartment options available upon request / re-confirmation.

DECODUCT METAL FLOOR TRUNKING ACCESSORIES

End Cap - Pre Galvanised

Item Code	Description		Product Selection Guide	Other Finish Options
EMCMEC2004012PG	M Comp. End Cap 200 x 40 x 1.2mm PG		Replace PG by HG	Hot Dip Galvanised (HDG)
EMCMEC3004012PG	M Comp. End Cap 300 x 40 x 1.2mm PG		Replace PG by HGGR	Epoxy Coated Green
			Replace PG by HGWH	Epoxy Coated White

Coupler - Pre Galvanised

Item Code	Description	
EMCMCPL2254015PG	M Comp. Coupler 225 x 40 x 1.5mm PG	
EMCMCPL3004015PG	M Comp. Coupler 300 x 40 x 1.5mm PG	

DECODUCT METAL FLOOR TRUNKING ACCESSORIES

90° Outside Riser - Pre Galvanised (PG)

Item Code	Description		Product Selection Guide	Other Finish Options
EMTOSR1C150415PG	1 Comp. Outside Riser 150 x 40 x 1.5mm PG		Replace PG by HG	Hot Dip Galvanised (HDG)
EMTOSR1C225420PG	1 Comp. Outside Riser 225 x 40 x 2.0mm PG		Replace PG by HGGR	Epoxy Coated Green
			Replace PG by HGWH	Epoxy Coated White

Equal Tee - Pre Galvanised (PG)

Item Code	Description		Product Selection Guide	Other Finish Options
EMTET1C150415PG	1 Comp. Equal Tee 150 x 40 x 1.5mm PG		Replace PG by HG	Hot Dip Galvanised (HDG)
EMTET1C225420PG	1 Comp. Equal Tee 225 x 40 x 2.0mm PG		Replace PG by HGGR	Epoxy Coated Green
			Replace PG by HGWH	Epoxy Coated White

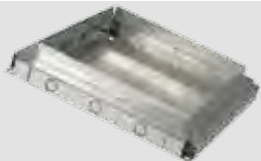
90° Bend - Pre Galvanised (PG)

Item Code	Description		Product Selection Guide	Other Finish Options
EMT90B1C150415PG	1 Comp. 90° Bend 150 x 40 x 1.5mm PG		Replace PG by HG	Hot Dip Galvanised (HDG)
EMT90B1C225420PG	1 Comp. 90° Bend 225 x 40 x 2.0mm PG		Replace PG by HGGR	Epoxy Coated Green
			Replace PG by HGWH	Epoxy Coated White

Reducer - Pre Galvanised (PG)

Item Code	Description		Product Selection Guide	Other Finish Options
EMR1C151050512PG	Comp. Reducer 150 x 100-50 x 50 x 1.2mm PG		Replace PG by HG	Hot Dip Galvanised (HDG)
			Replace PG by HGGR	Epoxy Coated Green
			Replace PG by HGWH	Epoxy Coated White

Vertical Access Box - Pre Galvanised (PG)

Item Code	Description		Product Selection Guide	Other Finish Options
EMFDVB2252512PG	Vertical Access Box 225 x 25 x 1.2mm PG		Replace PG by HG	Hot Dip Galvanised (HDG)
			Replace PG by HGGR	Epoxy Coated Green
			Replace PG by HGWH	Epoxy Coated White

2 & 3 Compartment options available upon request / re-confirmation.

DECODUCT METAL FLOOR SERVICE BOXES

Item Code	Description
EMFDSB30023012PG	Service Box 300 x 230 x 78mm 1.2mm Thk
EMFDSB30023000PG	Ser. Box 300 x 230 x 78mm 1.2mm Thk w/out M Plt



Accessories

Item Code	Description
EMSBSFBKT701PG	Mounting Plate For 3 x 3 Acc.
EMSBSFBKT702PG	Mounting Plate For 6 x 3 Acc.
EMSBSFBKT703PG	Mounting Plate (Blank)



TECHNICAL DATA SHEET

Service Box - Raised Floor		
Item Code	Trunking Size	Compartments
DFRSB 0PG	150 x 25 mm	2
DFRSB 1PG	225 x 25 mm	3
DFRSB 2PG	150 x 40 mm	2
DFRSB 3PG	225 x 40 mm	3

Service Box - Flush Floor		
Item Code	Trunking Size	Compartments
DFFSB 0PG	150 x 25 mm	2
DFFSB 1PG	225 x 25 mm	3
DFFSB 2PG	150 x 40 mm	2
DFFSB 3PG	225 x 40 mm	3

ADVANTAGES

Overall Dimension	
Floor Cut-Out	305 x 228 (mm)
Floor Box Depth	76 mm
Frame and Lid (Overall)	320 x 245 (mm)
Accessory Plate	210 x 86 (mm)
Frame Lid Recess	7 mm

- Floor boxes manufactured from galvanized steel
- Compact design
- Lid made of high impact resistant polycarbonate
- Self closing lid
- Knockout provided for conduit entry
- Offers maximum protection to accessories
- Steel reinforced snap in lid recessed for various floor finishes

Other Sizes & Thickness available upon request / re-confirmation.

Product codes may vary slightly.



DECODUCT METAL FLOOR DISTRIBUTION SYSTEM - RAISED FLOOR

DECODUCT G.I. Raised floor Trunking systems provides flexibility and ease of working during installation. Multi service two and three compartment trunking is available for distribution of power, voice, data and telecom services, where flexible positioning of service outlets is required.

DECODUCT Raised floor trunking is designed and developed keeping in mind consultant and contractor requirement of a durable practical and versatile solution for providing power and communication services in various commercial environment. Multi-service two and three compartment trunking is available for distribution of data and telecom services.

The trunking can be fully lidded to provide maximum protection of all data and telecom services.

Floor outlet boxes are available normally in a three module version. A steel reinforced snap in lid is recessed to accommodate a variety of floor finishes.

Overall depth of the Raised Floor outlet box varies with size of trunking.

The service outlet module comes complete with 2 conduit knockout plates and 2 trunking entry plates. It can be used as a through terminal or conduit outlet plates to meet the increasing demands using adjustable dividing fillets in the base unit. Combination service outlet plates are also available as per clients specification.

Fabricated from 1.2mm galvanised steel, the service box comes with conduit knockout plates and trunking entry plates.

ABS / PVC lid is capable of withstanding heavy deflection loads due to a steel lid re-inforcement optimising strength & durability.

The self closing lid has a special locking feature. Specially designed cable entries provide safe cable access.

Standard length of trunking is 3 mtrs. Body and lid are normally manufactured from 1.5 mm galvanised steel to BS EN 10346. Divisions are manufactured from 1.2mm galvanised steel to BS EN 10143.

DECODUCT METAL FLOOR DISTRIBUTION SYSTEM - FLUSH FLOOR

Decoduct Flush floor Trunking offers a flexible method of distributing services around an office / commercial network.

Decoduct Flush floor trunking is designed and developed keeping in mind consultant and contractor requirements of a durable practical and versatile solution for providing power and communication services in various commercial environment. Multi-service two and three compartment trunking is available for distribution of data and telecom services.

A service outlet module can be installed anywhere along its length, simply by removing a section of lid and dividers. The service outlet module is designed to replace a 500mm section of lid & supplied complete with dividers & a 6mm carpet recess. Available in options of either three or four dedicated outlet plates to meet the increasing demands using adjustable dividing fillets in the base unit. Combination service outlet plates are also available as per clients specification.

Fabricated from 1.2mm galvanised steel, the service box comes with conduit knockout plates and trunking entry plates.

ABS/PVC lid is capable of with standing heavy deflection loads due to a steel lid re-inforcement optimising strength & durability.

The self closing lid has a special locking feature. Specially designed cable entries provide safe cable access.

Standard trunking length is 3 mtrs. Standard finishes are as follows:

Body - Manufactured from 1.5 mm galvanised steel to BS EN 10143.

Divisions– Manufactured from 1.2 mm galvanised steel to BS EN 10143.

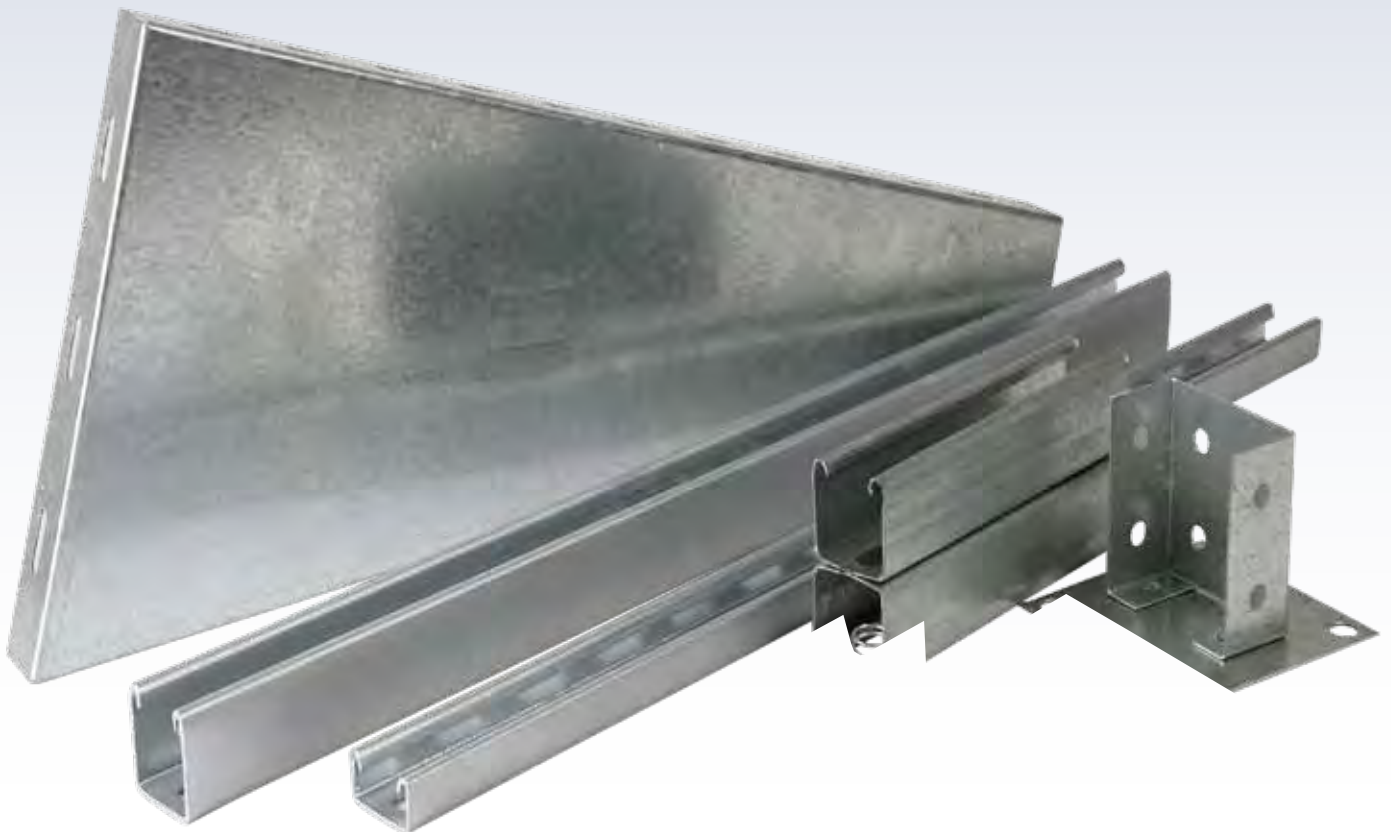
Lid – Manufactured from 1.5 mm galvanised steel to BS EN 10143.

Customer has option of choosing thickness up to 2mm.

This highly adaptable system provides solutions for challenges thrown up by developers, engineers and architects who wish to provide an efficient and easily managed system for new, modernized and refurbished constructions and buildings.



DECODUCT
METAL
CHANNELS
AND
SUPPORT
SYSTEM



DECODUCT METAL CHANNEL SYSTEM

Finish : Hot Dip Galvanised after fabrication, Standard length 3 Metre

Channel 41 x 21mm - Hot Dip Galvanised (HDG)

Item Code	Description		Product Selection Guide	Other Finish Options
EMCSLDCI412110HG	Slotted Channel 41 x 21 x 1.0mm HG		Replace HG by PG	Pre Galvanised (PG)
EMCSLDCI412112HG	Slotted Channel 41 x 21 x 1.2mm HG			
EMCSLDCI412115HG	Slotted Channel 41 x 21 x 1.5mm HG			
EMCSLDCI412120HG	Slotted Channel 41 x 21 x 2.0mm HG			
EMCSLDCI412125HG	Slotted Channel 41 x 21 x 2.5mm HG			

Channel 41 x 41mm - Hot Dip Galvanised (HDG)

Item Code	Description		Product Selection Guide	Other Finish Options
EMCSLDCI414110HG	Slotted Channel 41 x 41 x 1.0mm HG		Replace HG by PG	Pre Galvanised (PG)
EMCSLDCI414112HG	Slotted Channel 41 x 41 x 1.2mm HG			
EMCSLDCI414115HG	Slotted Channel 41 x 41 x 1.5mm HG			
EMCSLDCI414120HG	Slotted Channel 41 x 41 x 2.0mm HG			
EMCSLDCI414125HG	Slotted Channel 41 x 41 x 2.5mm HG			

Back to Back Channel - Hot Dip Galvanised (HDG)

Item Code	Description		Product Selection Guide	Other Finish Options
EMCBCHL418225HG	Plain Back to Back Channel 41 x 82 x 2.5mm HG		Replace HG by PG	Pre Galvanised (PG)

Cantilever Wall Bracket - Pre Galvanised (PG)

Item Code	Description		Product Selection Guide	Other Finish Options
EMWBKT10015020PG	Wall Bracket 100 x 150 x 2.0mm PG		Replace PG by HG	Hot Dip Galvanised (HDG)
EMWBKT05010020PG	Wall Bracket 50 x 100 x 2.0mm PG			
EMWBKT45048020PG	Wall Bracket 450 x 480 x 2.0mm PG			
EMWBKT50060020PG	Wall Bracket 500 x 600 x 2.0mm PG			
EMWBKT15020020PG	Wall Bracket 150 x 200 x 2.0mm PG			

Single Support Bracket With Head Plate - Hot Dip Galvanised (HDG)

Item Code	Description		Product Selection Guide	Other Finish Options
EMCSBKT414120HG	Single Support Bracket with Head Plate 41 x 41 x 2.0 HG		Replace HG by PG	Pre Galvanised (PG)

Note: Upto 2 mm thickness available.

TECHNICAL DATA SHEET - METAL CHANNELS

Decoduct Channel

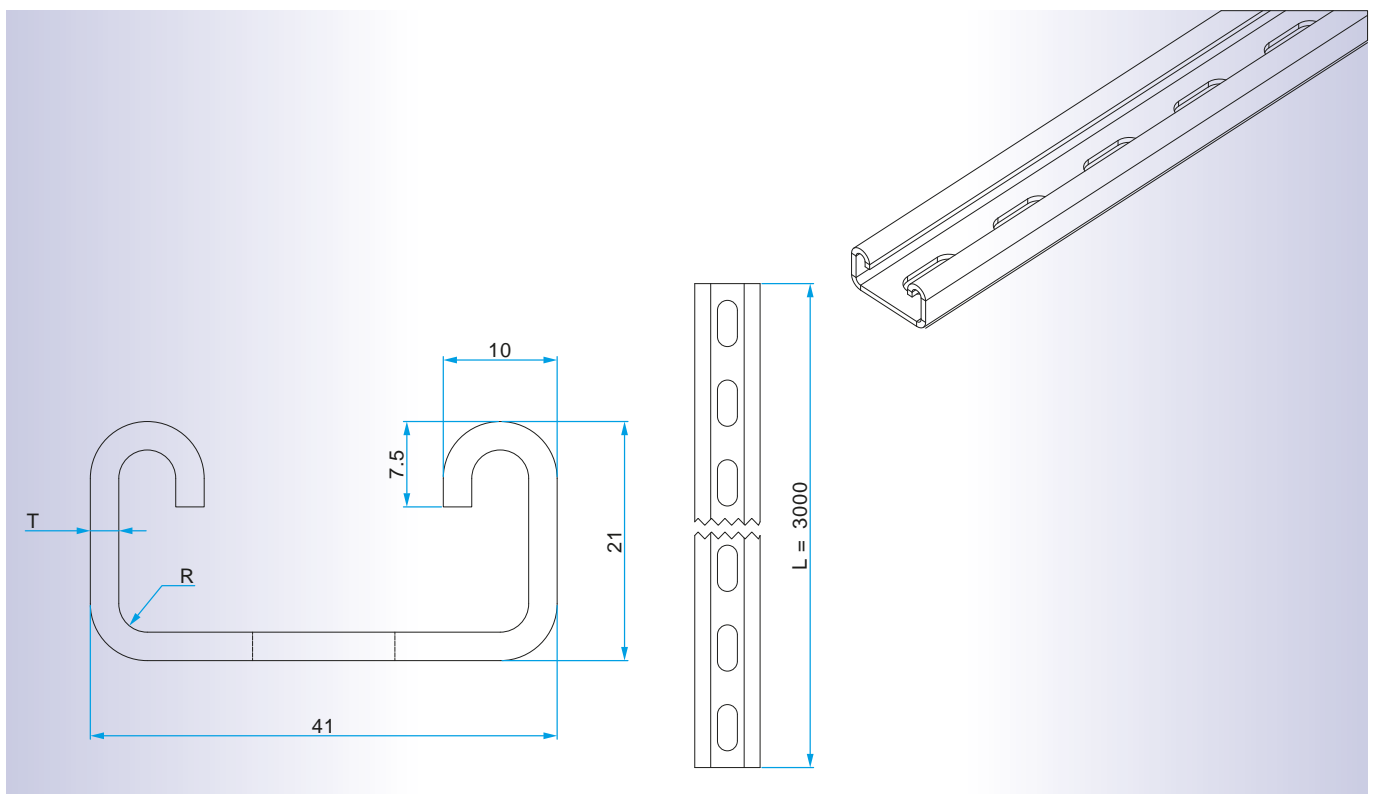
DECODUCT Cable Channel consists of one piece, ventilated or solid bottom channel section, designed for use with a single power cable or multiple control or single circuit cables.

- Typically used by all industries as a low cost way to connect equipment to main cable tray systems.
- Compact size makes it easier to position around and connect to equipment.

Size of C- Channels

	(a) 41 x 41 mm (nominal) (b) 41 x 21 mm (nominal)
• Surface Finish	(a) Pre- Galvanized (As per BS EN 10143) (b) Hot Dip Galvanized (As per BS EN ISO 1461)
• Thickness	1.0 mm, 1.2 mm, 1.5 mm, 2.0 mm, 2.5 mm (HDG only)
• Length	Standard length 3 meters
• Type of Channel	(a) Slotted (Ventilated Design) (b) Unslotted (Solid Bottom Design)

PRODUCT DRAWING (FOR REFERENCE ONLY)





DECODUCT
HARDWARE
FOR CABLE
TRAYS
TRUNKING
LADDERS
ETC



HARDWARE FOR DECODUCT CABLE TRAYS, TRUNKING, LADDERS ETC

Item Code	Description
EMHNBW701	M6x20 - Nut Bolt & 2Nos Washers
EMHWSPN701	Channel Spring Nut M6
EMHWELK701	Earth Link (Cu Braid & Cu Lugs)
EMHWBLN701	Roofing Bolt & Nut M6 x 20mm





DECODUCT GENERAL INFORMATION SAFETY AND OPERATIONAL PRACTICES



GENERAL GUIDELINES ON SAFETY

WARNING!-Do not use a cable tray as a walkway, ladder, or support for people; cable tray is a mechanical support system for cables and raceways. Using cable trays as walkways can cause personal injury and also damage cable tray and installed cables.

Hazardous voltages in electrical equipment can cause severe personal injury or death. Safety related work practices, as described in NFPA 70E, Part 11 or relevant applicable standard of the country should be followed at all times. Specific safety measures have to follow as applicable, and all the safety measures are to be covered separately as per Project Safety Plan.

The performance of a cable tray wiring system is dependent on its proper installation, including supports and cables. Neglecting installation and maintenance guidelines may lead to personal injury as well as damage to property.

Installation and maintenance of cable tray wiring systems shall be conducted only by qualified personnel. For the purposes of this guideline, a qualified person is one who is familiar with electrical construction. In addition, the person is: Trained and authorized to test, energize, clear, ground, tag, and lock out circuits in accordance with established safety practices: Trained in the proper care and use of protective equipment such as insulated rubber gloves, hard hat, safety glasses or face shields, dust mask, and flash resistant clothing in accordance with established safety practices.

RECEIVING AND UNLOADING PRACTICES

Cable tray is generally bundled and shipped via motor freight, except for export shipments that could be crated or loaded in containers. Accessories and small components are boxed and often skidded.

Cable tray can be shipped via enclosed van, trailer, or flat bed trailer. Van trailers are normally used for less than truck load (LTL) shipments. This method of shipment is most common and cost effective and offers maximum protection from the weather during shipment. LTL shipments should be hand unloaded unless provisions have been made with the cable tray manufacturer for forklift unloading.

Flat bed trailers are often used for full truckload shipments and when customers want side forklift unloading or sling unloading by crane. (Special care must be exercised using slings so cable tray is not crushed from the improper location and lifting by sling.)

CORRECT



NOT CORRECT



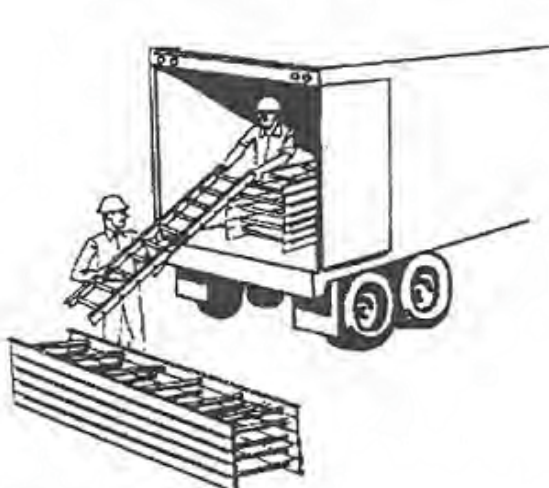
Small to medium size orders less than 2000 ft. (600 m) are generally shipped via common carrier LTL in enclosed vans.

If hand unloaded, workers should wear gloves.

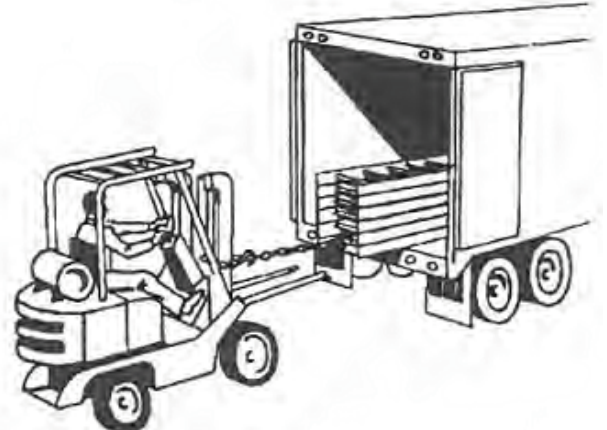
Inventory all items immediately after unloading, using the manufacturer's packing list. Note on the bill of lading any shortage or shipping damage for filing freight claim.

To prevent damage to cable tray, never pull cable tray from truck trailer by chaining to bottom rung and dragging out of trailer.

CORRECT



NOT CORRECT





OPERATION

Materials: Materials used will be as per the material submittal approved by the engineer and routing as well and sizes will be as per the approved drawings in co-ordination with other services.

STORAGE AND PROTECTION GUIDELINES

Cable Trays, Trunking and Accessories shall be unloaded with care to avoid any damages. If they are shipped in packs or pallets, each pack of pallet shall be lifted individually with suitable lifting equipment. Every precaution shall be taken to preserve their cleanliness before installation.

Hot dipped galvanized after fabrication (H.D.G.A.F.) (see ASTM A 123) steel, aluminum, and stainless steel cable tray and fiberglass or other non-metallic cable tray can be stored outside without cover, but should be loosely stacked, elevated off the ground, and ventilated to prevent storage stain. If appearance is important, cable tray should be stored indoors to prevent moisture, water or other foreign materials from staining or adhering to cable tray.

Mill galvanized (Ref. ASTM A 653) or electro-galvanized (Ref. ASTM B 633) cable tray must be protected or stored in a well ventilated, dry location.

Bare steel cable tray should receive a protective coating as soon as possible to prevent surface rust. Cable tray must be protected from scratching and marring of finish.

Cable Trays, Trunking and Ladders shall be properly supported and stacked on a flat surface.

Cable Trays, Trunking and Ladders shall be protected from sunlight and moisture by covering them with tarpaulin.

Cable Trays, Trunking and Ladders shall be stacked properly in neat and orderly manner, slightly above the ground level.

Cable Trays, Trunking and Ladders shall be stored and stacked in dry area and shall be properly protected.

INSTALLATION GUIDELINES

Ensure that the work area is clean, ready and safe to start the installation of cable tray, trunking & cable ladder.

Ensure the installation of cable tray, trunking & cable ladder are carried out in accordance with manufacturer's installation recommendations, requirement of applicable standards and in accordance with recognized industrial practices and as specified in project specification to ensure that installation complies with requirements.

Prior to start the installation, approved shop drawings to be referred & coordinated drawings related to the area of installation and ensure that required materials are available at site as per approved material submittals.

Ensure the materials are stored properly and there is no mark of damage or deformity of any kind before issuing the material from site store. All materials and accessories should also be free of rust, dust, scale, or oil.

Ensure that the issued materials are of approved specifications / submittals and as per the the requirement of the area shop drawing's. (i.e. Make, size, Type etc.,).

Site Engineer / Site supervisor has to ensure all civil works are completed for the area of installation and released / cleared by civil section to proceed on with cable tray, trunking & cable ladder installation.

Mark and line out the route of Cable Tray, Trunking & Cable Ladder as per approved shop drawings & coordinated drawings with marking threads.

Level threads shall be installed & adjusted to above the level of ceiling or drop beams wherever the trunking job is being carried out.

The path of Cable Tray, Trunking & Cable Ladder to be coordinated with other services.

Minimum space from the structure and other services to be maintained to facilitate easy handling and maintenance of cables.

Supporting G.I channels shall be suspended from the slab using GI threaded rods, GI washers and GI nuts at regular intervals not more than 1.2 mtr between the supports or as recommended by the manufacturer and laid project specifications.



Cable Trays and Trunking shall be fixed with metal bracket at an interval of 1200mm or less as per manufacturer recommendations and at 250 mm from bends, intersection and termination points with GI Springs nuts and washers.

Expansion connections shall be made wherever Cable Tray and Trunking are crossing building expansion joints.

All straight joints, bends and offset connections shall be made neatly using manufacturer’s standard fittings.

Cut portion of Trays and Trunking, GI channels to fabricate the required size and shape shall be made free of sharp edges and coated with zinc rich paint.

Tray and Trunking joints are to be positioned as close to the supports as possible.

Install 12 mmx1.5mm copper braided earth bonding straps externally between all length of Cable Tray / Trunking & cable ladder and provide a copper bending straps across each joint; fixed with independent mushroom headed electro-plated bolts, nuts and serrated washers.

Ensure bonding of all the trays & trunking / tray systems are connected to main earthing system at the nearest point to the main earthing terminals.

Construction Experience-It is recommended that the work described above shall be.. performed by qualified persons familiar with standard electrical construction practices, electrical equipment, and safety of electrical wiring systems.

COMMON TOOLS USED FOR INSTALLATION

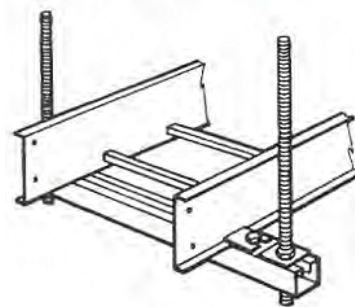
- Metal cutting saw
- Screwdriver / Box Spanners
- Drill with bits
- Flat File
- Open end wrench
- Sealant for cut edges
- Leveling device
- Tape measure
- Tri-Square
- C-clamp
- Torque wrench
- Ratchet wrench
- Offset Bolt cutters (Wire mesh)
- Dust Mask (Fiberglass)
- Appropriate safety equipment (helmet, hand gloves/ other PPE)

Caution! Do not cut or drill structural building members (e.g. I-beams) without approval by the general contractor.

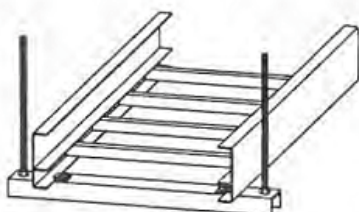
NOTE: Nonmetallic supports and hardware may require special load bearing considerations due to material composition and application temperature.



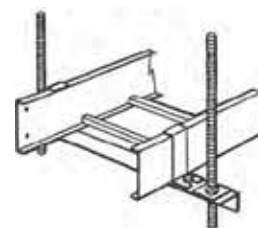
STRUT NUT WITH REGULAR SPRING



C- CHANNEL SUPPORT



STRUT SUPPORT



ANGLE IRON SUPPORT



DECODUCT METAL CABLE MANAGEMENT SYSTEMS PRESTIGIOUS PROJECTS

- ADCE
- TABREED
- MADINAT JUMEIRAH
- DWTC
- WIQAF TOWERS
- LULU MALL
- PETROFAC TOWERS
- DUBAI SAFARI
- EMIRATES NATIONAL SCHOOL
- OASIS MALL
- CIVIL DEFENSE BUILDING
- SKY VIEWS ADDRESS
- OASIS MALL - BAHRAIN
- COPPER MUELLER FACTORY BAHRAIN
- IKEA - BAHRAIN